

# ACPMGM-042 Series Synchronous Gearmotors



## FEATURES

- AC Synchronous Gearmotors
- Designed for High-Volume Applications
- Up to 56 oz-in. of Torque
- 5 Watt
- 60/50 Hz
- 42mm Motor Body Diameter
- Can Be Customized for:
  - Current/Voltage
  - Shaft Options
  - Cables and Connectors
- RoHS Compliant

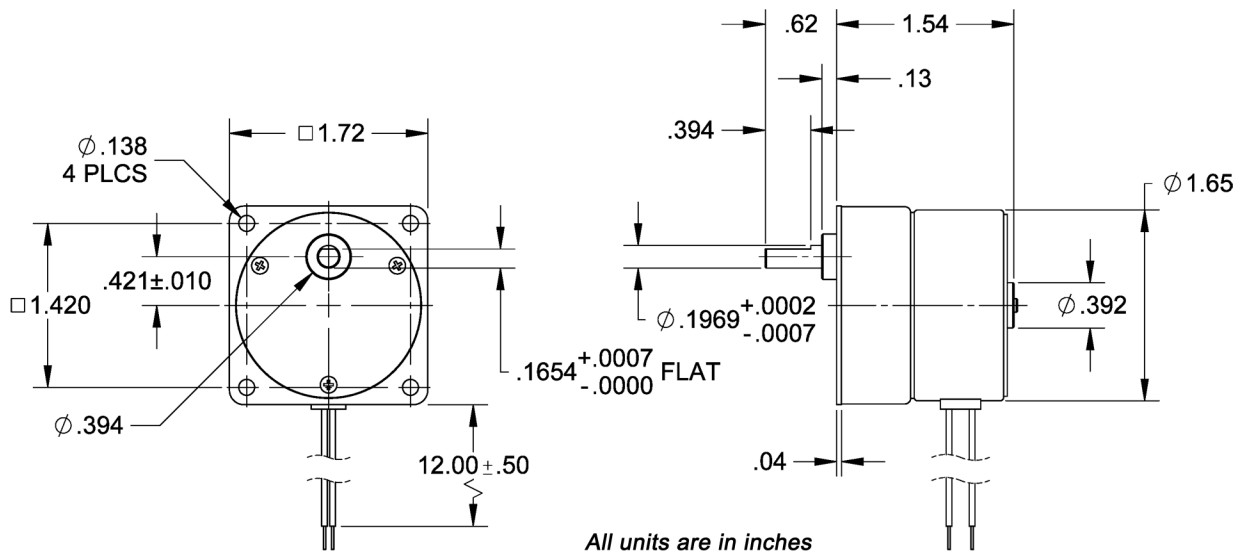


## DESCRIPTION

Anaheim Automation's ACPMGM-042 Series AC Gearmotors come in a variety of input voltages and rated torques/speeds. These AC Synchronous Gearmotors are ideal for applications that require a constant speed while connecting to AC power line voltage. The ACPMGM-042 series can provide up to 56 oz-in. of torque. These synchronous gearmotors are available with many different options in speed and torque. Wire up the motor with the appropriate capacitor to AC voltage, and the motor will maintain a constant speed as long as the load remains under the rated torque as listed in the table.

*Note: Capacitors sold separately. Compatible capacitors are listed on the specifications table on the next page.*

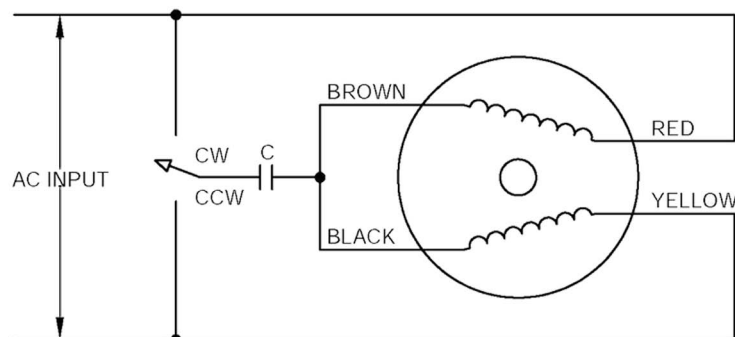
## DIMENSIONS



L010509

| Model #                     | Input Voltage (VAC) | Motor Speed (RPM) | Rated Torque (oz-in) | Capacitor               |            |                     |
|-----------------------------|---------------------|-------------------|----------------------|-------------------------|------------|---------------------|
|                             |                     |                   |                      | Item #                  | ( $\mu$ F) | Rated Voltage (VAC) |
| ACPMGM-042-040-24-250-R10   | 24                  | 25                | 29                   | CAP-CBB61-100VAC-8uF    | 8          | 70 or Above         |
| ACPMGM-042-040-24-250-R20   | 24                  | 12.5              | 53                   | CAP-CBB61-100VAC-8uF    | 8          | 70 or Above         |
| ACPMGM-042-040-24-250-R25   | 24                  | 10                | 56                   | CAP-CBB61-100VAC-8uF    | 8          | 70 or Above         |
| ACPMGM-042-040-24-250-R30   | 24                  | 8.3               | 56                   | CAP-CBB61-100VAC-8uF    | 8          | 70 or Above         |
| ACPMGM-042-040-24-250-R50   | 24                  | 5                 | 56                   | CAP-CBB61-100VAC-8uF    | 8          | 70 or Above         |
| ACPMGM-042-040-24-250-R75   | 24                  | 3.3               | 56                   | CAP-CBB61-100VAC-8uF    | 8          | 70 or Above         |
| ACPMGM-042-040-24-250-R100  | 24                  | 2.5               | 56                   | CAP-CBB61-100VAC-8uF    | 8          | 70 or Above         |
| ACPMGM-042-040-24-250-R120  | 24                  | 2.1               | 56                   | CAP-CBB61-100VAC-8uF    | 8          | 70 or Above         |
| ACPMGM-042-040-24-250-R150  | 24                  | 1.6               | 56                   | CAP-CBB61-100VAC-8uF    | 8          | 70 or Above         |
| ACPMGM-042-040-110-250-R10  | 110                 | 25                | 29                   | CAP-CBB61-250VAC-0.47uF | 0.5        | 230 or Above        |
| ACPMGM-042-040-110-250-R20  | 110                 | 12.5              | 53                   | CAP-CBB61-250VAC-0.47uF | 0.5        | 230 or Above        |
| ACPMGM-042-040-110-250-R25  | 110                 | 10                | 56                   | CAP-CBB61-250VAC-0.47uF | 0.5        | 230 or Above        |
| ACPMGM-042-040-110-250-R30  | 110                 | 8.3               | 56                   | CAP-CBB61-250VAC-0.47uF | 0.5        | 230 or Above        |
| ACPMGM-042-040-110-250-R50  | 110                 | 5                 | 56                   | CAP-CBB61-250VAC-0.47uF | 0.5        | 230 or Above        |
| ACPMGM-042-040-110-250-R75  | 110                 | 3.3               | 56                   | CAP-CBB61-250VAC-0.47uF | 0.5        | 230 or Above        |
| ACPMGM-042-040-110-250-R100 | 110                 | 2.5               | 56                   | CAP-CBB61-250VAC-0.47uF | 0.5        | 230 or Above        |
| ACPMGM-042-040-110-250-R120 | 110                 | 2.1               | 56                   | CAP-CBB61-250VAC-0.47uF | 0.5        | 230 or Above        |
| ACPMGM-042-040-110-250-R150 | 110                 | 1.6               | 56                   | CAP-CBB61-250VAC-0.47uF | 0.5        | 230 or Above        |
| ACPMGM-042-040-220-250-R10  | 220                 | 25                | 29                   | CAP-CBB61-450VAC-0.1uF  | 0.1        | 430 or Above        |
| ACPMGM-042-040-220-250-R20  | 220                 | 12.5              | 53                   | CAP-CBB61-450VAC-0.1uF  | 0.1        | 430 or Above        |
| ACPMGM-042-040-220-250-R25  | 220                 | 10                | 56                   | CAP-CBB61-450VAC-0.1uF  | 0.1        | 430 or Above        |
| ACPMGM-042-040-220-250-R30  | 220                 | 8.3               | 56                   | CAP-CBB61-450VAC-0.1uF  | 0.1        | 430 or Above        |
| ACPMGM-042-040-220-250-R50  | 220                 | 5                 | 56                   | CAP-CBB61-450VAC-0.1uF  | 0.1        | 430 or Above        |
| ACPMGM-042-040-220-250-R75  | 220                 | 3.3               | 56                   | CAP-CBB61-450VAC-0.1uF  | 0.1        | 430 or Above        |
| ACPMGM-042-040-220-250-R100 | 220                 | 2.5               | 56                   | CAP-CBB61-450VAC-0.1uF  | 0.1        | 430 or Above        |
| ACPMGM-042-040-220-250-R120 | 220                 | 2.1               | 56                   | CAP-CBB61-450VAC-0.1uF  | 0.1        | 430 or Above        |
| ACPMGM-042-040-220-250-R150 | 220                 | 1.6               | 56                   | CAP-CBB61-450VAC-0.1uF  | 0.1        | 430 or Above        |

\*Torque Ratings at 50Hz.



|              |               |                   |              |
|--------------|---------------|-------------------|--------------|
| Noise Level: | 45 dB         | Phase:            | Single-Phase |
| Frequency:   | 50/60Hz       | Temperature Rise: | 60°C         |
| Rotation:    | Bidirectional |                   |              |