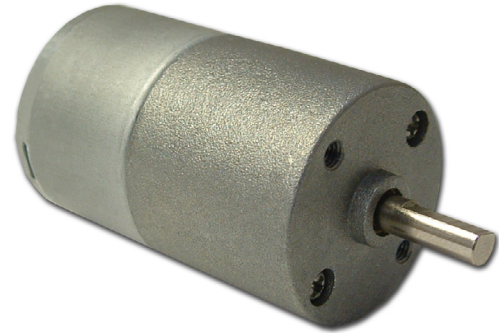


# BDSG-27-20-12V - DC Motors With Spur Gearboxes



FEATURES

- DC Brush Spur Gearmotor
- Designed for High Volume Applications
- Up to 15.55 oz-in of Continuous Torque
- 27mm Motor Diameter
- Custom Versions are Available



DESCRIPTION

The BDSG-27-20-12V Series was designed for high-volume OEM applications with low cost being the primary objective. Available in gear ratios from 11 to 450, the BDSG-27-20-12V Series gearmotor offers continuous torque of up to 15.55 oz-in. These motors are fully reversible. The BDSG-27-20-12V Series gearmotors are a cost-effective solution to manage motion control in many rotary applications including medical, semiconductor, pumps, robotics, CNC, or any other situation when a low cost Brush DC Spur gearmotor is needed.

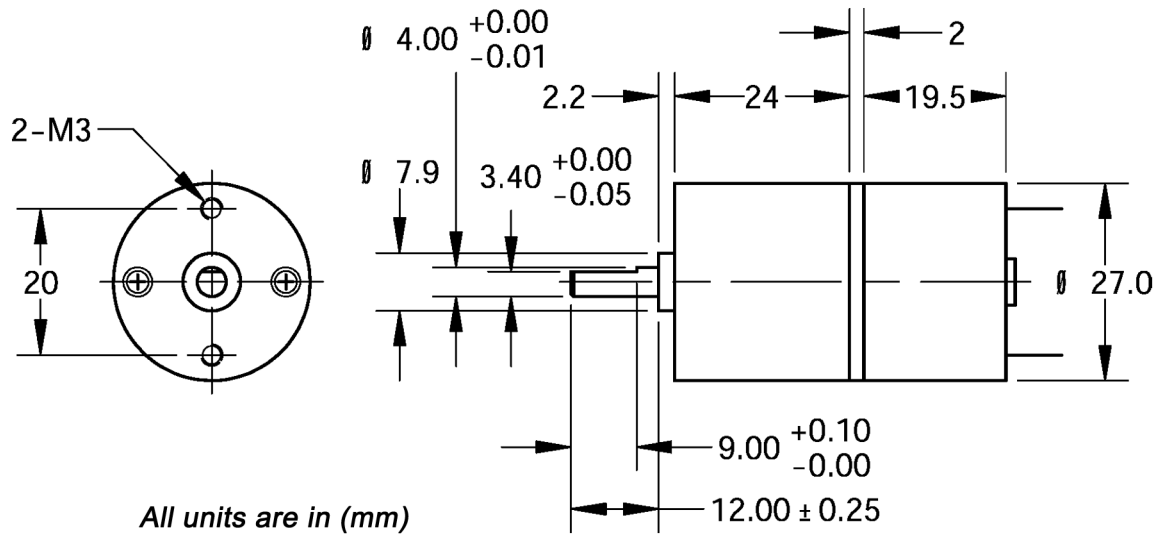
SPECIFICATIONS

Motor Specs	No Load Speed (RPM)	Rated Voltage (V)	No Load Current (A)	Output Power (W)	Rated Speed (RPM)	Rated Current (A)	Stall Current (A)
	5200	12	0.04	0.24	3900	0.07	0.26

Model #	Gear Ratio	No Load Speed (RPM)	Rated Speed (RPM)	Rated Torque (oz-in)	Peak Torque (oz-in)	Weight (lbs)	L Length (mm)
BDSG-27-20-12V-5200-R11	11	473	354	0.56	27.77	0.16	21
BDSG-27-20-12V-5200-R23	23	226	169	1.11	27.77	0.16	21
BDSG-27-20-12V-5200-R27	27	192	144	1.39	27.77	0.16	21
BDSG-27-20-12V-5200-R52	52	100	75	2.36	55.55	0.16	23
BDSG-27-20-12V-5200-R60	60	87	65	2.64	55.55	0.16	23
BDSG-27-20-12V-5200-R69	69	75	56	3.06	55.55	0.16	23
BDSG-27-20-12V-5200-R81	81	64	48	3.61	55.55	0.16	23
BDSG-27-20-12V-5200-R113	113	46	34	4.44	83.32	0.16	25
BDSG-27-20-12V-5200-R132	132	39	29	5.14	83.32	0.16	25
BDSG-27-20-12V-5200-R153	153	34	25	5.97	83.32	0.16	25
BDSG-27-20-12V-5200-R178	178	29	22	6.94	83.32	0.16	25
BDSG-27-20-12V-5200-R210	210	25	18	8.19	83.32	0.16	25
BDSG-27-20-12V-5200-R250	250	21	16	8.61	83.32	0.16	27
BDSG-27-20-12V-5200-R290	290	18	13	10.00	83.32	0.17	27
BDSG-27-20-12V-5200-R350	350	15	11	11.80	83.32	0.17	27
BDSG-27-20-12V-5200-R390	390	13	10	13.47	83.32	0.17	27
BDSG-27-20-12V-5200-R450	450	11	8	15.55	83.32	0.17	27

L010519

DIMENSIONS



SPECIFICATIONS

Housing Material:	Steel
Operating Temperature:	-10° - 40° C
Bearing at Output:	Ball Bearing
Humidity:	90% - 95% Operating