

# MDCKB1-120081-01 Series



## FEATURES

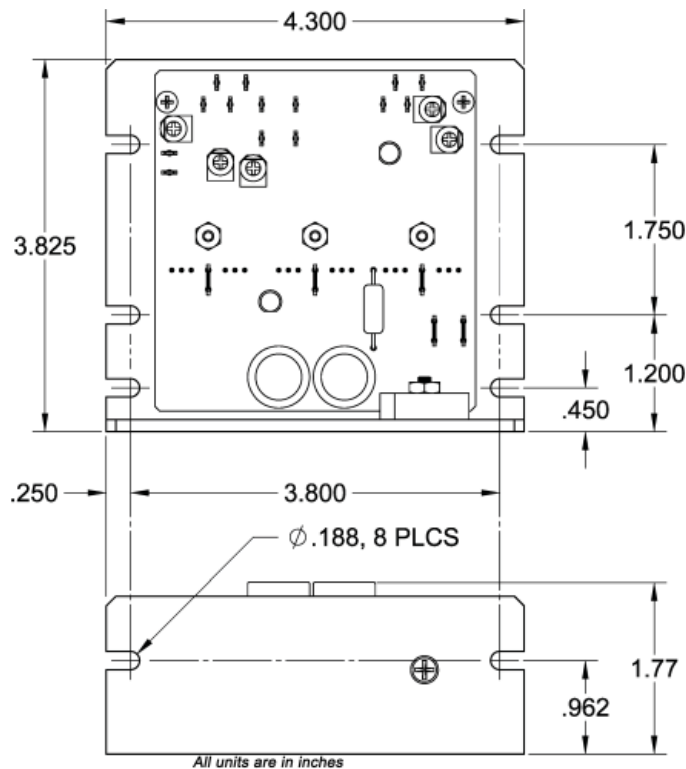
- **Maximum Current Limit Setting from 2-8Amps Peak**
- **External Potentiometer Speed Control**
- **160VDC Motor Voltage Bus**
- **2-Quadrant Operation**
- **Hall Sensor Feedback**
- **Varying Velocity Protection**
- **Short Circuit Protection**
- **Requires 85-135 VAC**
- **Selectable Ramp Up/Down**
- **Run/Stop, Freewheel and Direction Inputs**
- **RoHS Compliant**



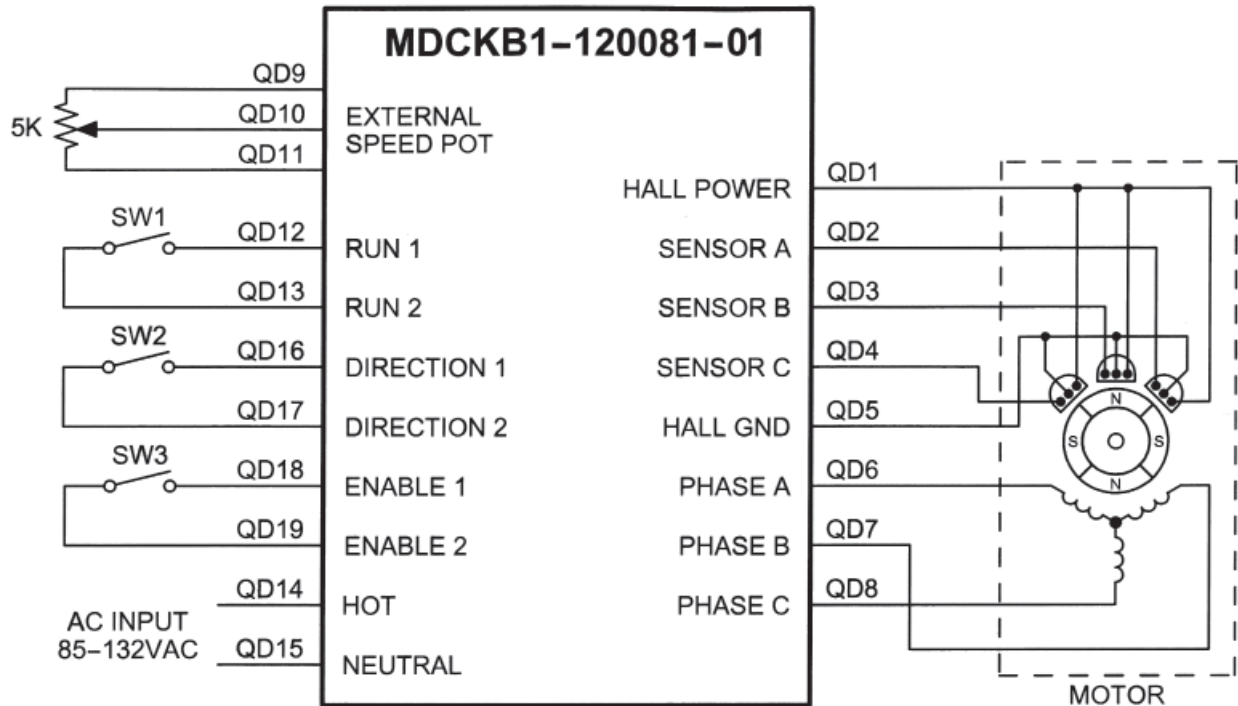
## DESCRIPTION

The MDCKB1-120081-01 driver is designed to drive DC Brushless Motors at currents up to 8A (peak) and 160VDC. Using hall sensor feedback, a varying velocity mode can be selected. The driver is protected against over current (cycle-by-cycle), hall sensor error and under voltage. When an error occurs, a fault light is turned on to notify the user. Included on the driver are internal potentiometer to control the maximum phase current allow in the motor, the maximum and base speed of the motor, and open-loop compensation. In addition, an external potentiometer (5K) is used to control the speed. The direction of the motor can be preset by the direction control input. Other inputs to the drive include a run/stop and a motor enable input. When using the run/stop input, it overrides all other inputs into the driver.

## DIMENSIONS



L010721



Power Requirements:	85VAC (min) - 132AC(max) (TB4, Pins 1 and 2)
Output Current Range:	1.0 - 8.0 Amps Peak 0.5 - 4.0 Amps Continuous
Operating Temperature:	Heat Sink 0° - 70°C
Hall Sensor Power Output:	(6.25 @ 30mA maximum. Typical current draw from hall sensor is 20mA. All three Hall Sensor inputs are pulled through 20K ohm resistors.

Model #	Description
MDCKB1-120081	110VAC DC Brushless Driver at 8A
MDCKB1-120081-01	110VAC Open Loop Only DC Brushless Driver at 8A
PWR-10EMC1	Dual Stage RFI Power Line Filter