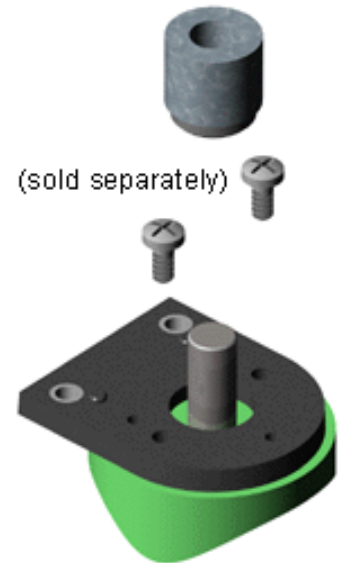


Step 1: Base Mounting

Slip the base and centering tool (sold separately) over the shaft. Adjust the base to align the base holes with the screw holes on the mounting surface. Press down on the centering tool to secure it to the mounting surface. Fasten the mounting screws to the mounting surface and remove the centering tool.



Step 2: Spacer Tool Installation

For shafts less than 3/8", snap the space tool clip around shaft (Figure A). For shafts equal to or greater than 3/8", place spacer tool around the shaft (Figure B).

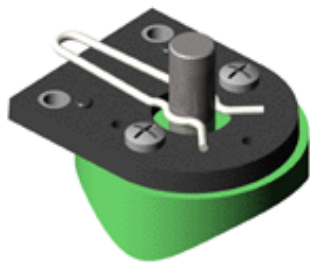


Figure A. Spacer Clip

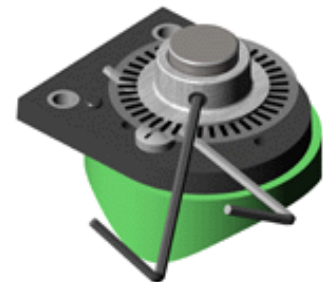
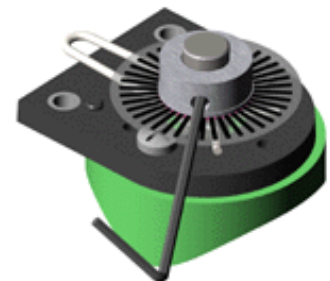


Figure B. Space Tool

Step 3: Codewheel Installation

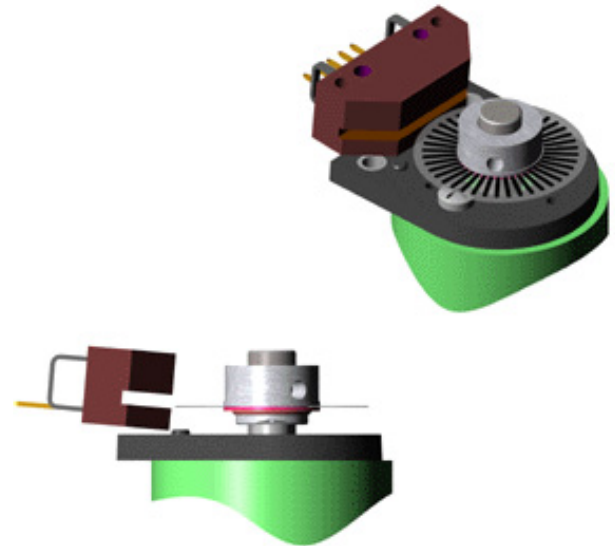
Slip the codewheel over the shaft with the disk side down until it touches the space tool. Tighten the set screw with the provided hex wrench while pressing down on the hub of the disk. Remove the spacer tool.



L010742

Step 4: Encoder Module Installation

Slip the optical encoder module into position until the assignment pins slip into the holes of the module. The pins should be on the bottom of the module facing out.



Step 5: Cover Installation

Place the cover over the assembly and secure the components in place with two 4-40 x 5/8" screws supplied with the kit.

