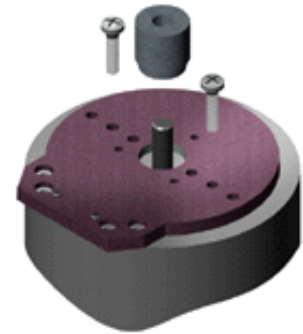


## For Shaft Diameters Less Than or Equal to 0.394" (10mm)

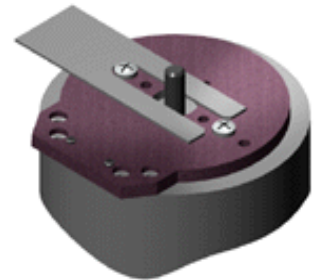
### Step 1: Base Mounting

Slip the base and centering tool (sold separately) over the shaft. Adjust the base to align with the base holes with the screw holes on the mounting surface. Press down on the centering tool to secure it to the mounting surface. Fasten the mounting screws to the mounting surface and remove the centering tool.



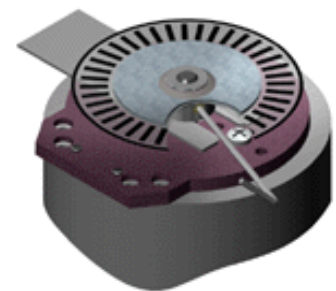
### Step 2: Spacer Tool Installation

Place the spacer tool around the shaft. It should be resting flat against the base.



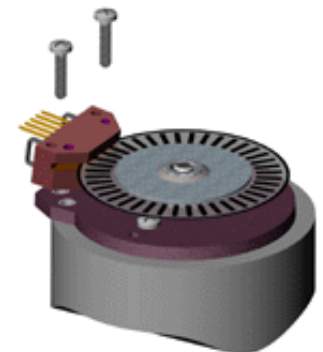
### Step 3: Codewheel Installation

Slip the codewheel over the shaft with the disk side on top until it touches the spacer tool. Tighten the set screw with the provided hex wrench while pressing down on the hub of the disk. Remove the spacer tool.



### Step 4: Encoder Module Installation

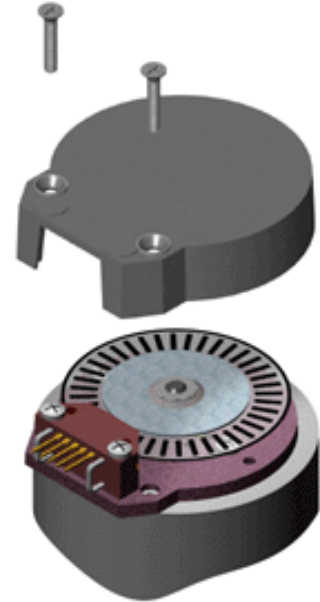
Slip the optical encoder module into position until the assignment pins slip into the holes of the module. The pins should be on the top of the module facing out. Secure the encoder module to the base with the two 4-40 x 1/2" pan head screws which are supplied with the kit.



L010743

### Step 5: Cover Installation

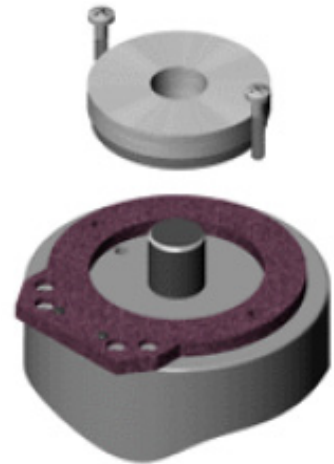
Place the cover over the assembly and secure the components in place with two 4-40 x 5/8" screws supplied with the kit.



### *For Shaft Diameters Greater Than 0.394" (10mm)*

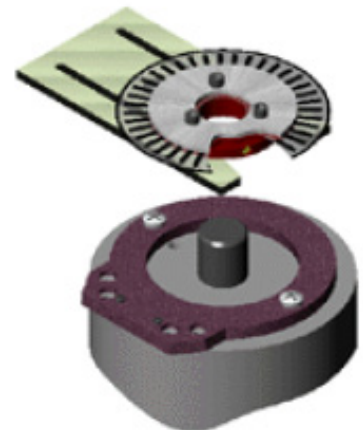
#### Step 1: Base Mounting

Slip the base and centering tool (sold separately) over the shaft. Adjust the base to align with the base holes with the screw holes on the mounting surface. Press down on the centering tool to secure it to the mounting surface. Fasten the mounting screws to the mounting surface and remove the centering tool.



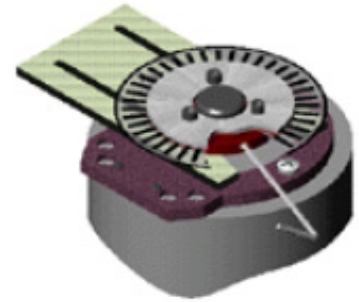
#### Step 2: Spacer Tool Installation

Push the spacer tool onto the bottom section of the hub/disk assembly. Make sure the spacer tool snaps only on the lower part of the hub. Align the hub set screws as shown in the drawing to the right.



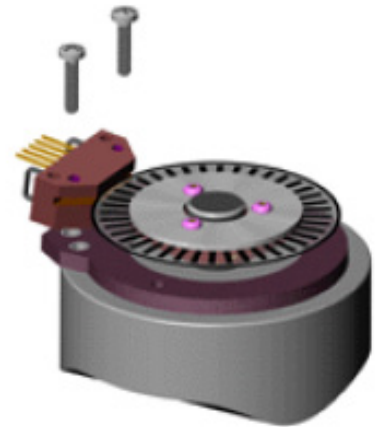
### Step 3: Codewheel Installation

Slip the codewheel over the shaft with the disk side down until it touches the space tool. Tighten the set screw with the provided hex wrench while pressing down on the hub of the disk. Remove the spacer tool.



### Step 4: Encoder Module Installation

Slip the optical encoder module into position until the assignment pins slip into the holes of the module. The pins should be on the top of the module facing out. Secure the encoder module to the base with the two 4-40 x 1/2" pan head screws which are supplied with the kit.



### Step 5: Cover Installation

Place the cover over the assembly and secure the components in place with two 4-40 x 5/8" screws supplied with the kit.

