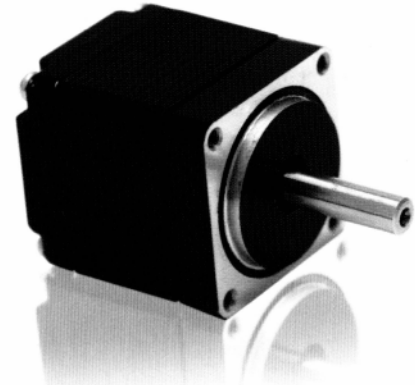


11Y Series - High Torque Stepper Motors



FEATURES

- NEMA 11 Frame Size
- 1.8° Step Angle
- High Torque - Up to 17 oz-in
- High Step Accuracy and Resolution
- Low Vibration and Noise
- Can be Customized for
 - Winding Current
 - Shaft Options
 - Cables and Connectors



DESCRIPTION

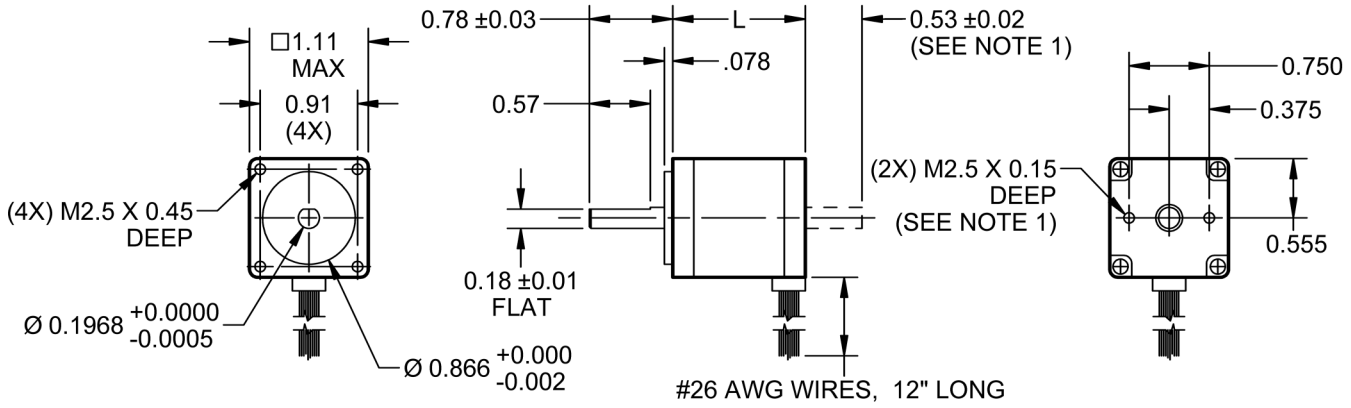
The 11Y Series High Torque Step Motors come in a small package with high torque density. These motors offer a great value without sacrificing quality. These motors were designed to offer the highest possible torque while minimizing vibration and audible noise. A broad line of motor windings and stack lengths are available off-the-shelf, or the motors can be customized to fit your machine requirements. The standard 4 lead wire motors can be connected to allow the flexibility for your application. Anaheim Automation can also customize the winding to perfectly match your voltage, current, and maximum operating speed. [See Accessories on our website for optional motor adders such as encoders, cables, and connectors. See compatible drivers for the 11Y Series: MBC15081, MBC02581TB](#)

SPECIFICATIONS

Model #	NEMA Size	Bipolar Torque (oz-in)	Bipolar Current (A)	Series Inductance (mH)	Rotor Inertia (oz-in-sec ²)	Shaft Diameter (in)	# of Lead Wires	Weight (lbs)	L Length (in)
11Y102S-LW4	11	8.3	0.67	4.0	0.00013	0.197	4	0.24	1.25
11Y202S-LW4	11	13.2	0.67	5.0	0.00017	0.197	4	0.31	1.75
11Y302S-LW4	11	16.7	0.67	7.0	0.00025	0.197	4	0.44	2.00

Notes: The 7th character "S" denotes a single shaft, use "D" for double shaft. Double shafts include encoder mounting provisions. Custom leadwires, cables, connectors, shaft options, and windings are available upon request.

L010169



(All units are inches)

Note 1: Dual Shaft option only

