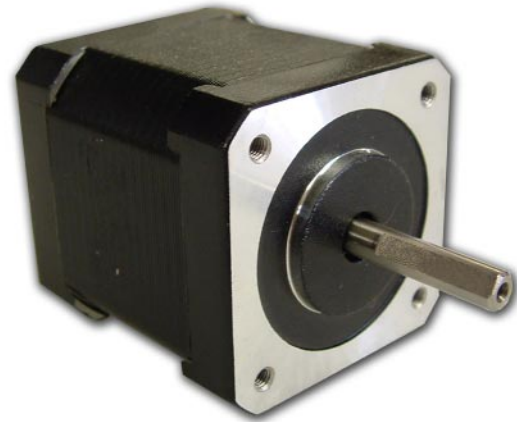


17L9 Series - High Torque Step Motors



FEATURES

- **NEMA 17 Frame Size**
- **0.9° Step Angle**
- **High Torque - Up to 70 oz-in**
- **High Step Accuracy and Resolution**
- **Low Vibration and Noise**
- **Can be Customized for**
 - Winding Current
 - Shaft Options
 - Cables and Connectors



DESCRIPTION

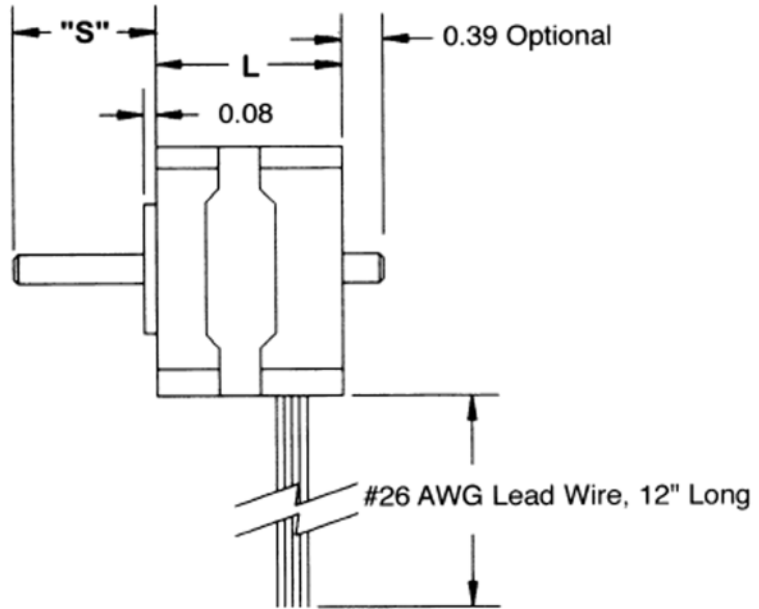
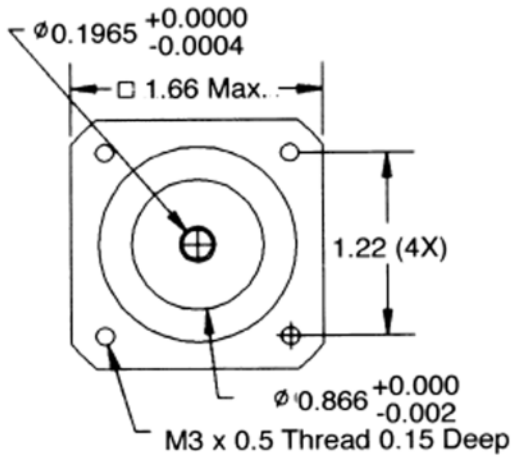
The 17L9 Series High Torque Stepper Motors offer a great value without sacrificing quality. These motors have a 0.9° step angle making them higher precision than the typical 1.8° version. However, like the standard versions, motors were designed to offer the highest possible torque while minimizing vibration and audible noise. A broad line of motor windings and stack lengths are available off-the-shelf. We have both 4-Lead and 6-Lead motors that can be connected in all possible configurations: series, unipolar, or parallel, to allow the maximum flexibility for your application. We can also customize the winding to perfectly match voltage, current, and maximum operating speed to meet your requirements. [See Accessories on this website for optional motor adders such as encoders, cables and connectors.](#) [For gearbox options, see Gearboxes.](#) [See compatible drivers for the 17L9 Series: MBC15081, and MBC25081TB](#)

SPECIFICATIONS

Model #	NEMA Size	Bipolar Torque (oz-in)	Bipolar Current (A)	Bipolar Inductance (mH)	Rotor Inertia (oz-in-sec ²)	Shaft Diameter (in)	# of Lead Wires	Weight (lbs)	L Length (in)
17L9203D-LW8	17	70.0	0.70	1.00	0.000300	.20	8	0.60	1.50
17L9203S-LW8	17	70.0	0.70	1.00	0.000300	.20	8	0.60	1.50

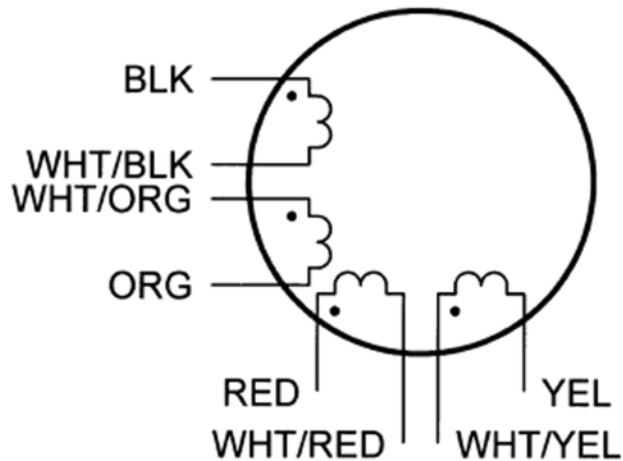
Notes: All Shafts have a flat unless otherwise noted. The 7th character "S" denotes a single shaft, use "D" for double shaft. Double shafts include encoder mounting provisions. Custom cables, connectors, and windings are available upon request.

L010593



Note 1: Double shaft option only.

(All units are inches)



DIMENSION

WIRING INFORMATION