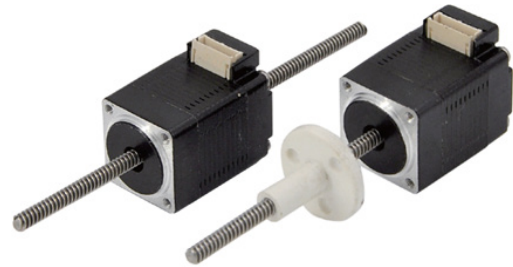


08AW Stepper Linear Actuators



FEATURES

- NEMA Size 08
- Motor Winding Options Available
- Custom Lead Screw Lengths
- Stepper Motor with Internal Nut
- Self Contained Package with Ball Bearings
- 1.8° Step Angle
- 0.003048mm or 0.01mm Per Full Step

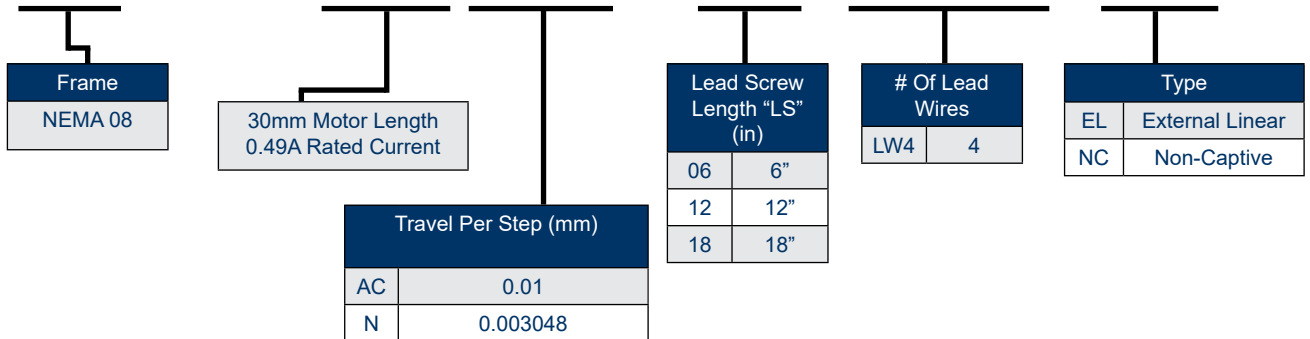


DESCRIPTION

The 08AW Linear Stepper Motors are designed to be the most versatile linear positioning motors on the market. These robust linear actuators, available in non-captive or external linear options, use a NEMA 08 hybrid stepper motor, and can be easily configured to solve difficult application problems. Integration of a lead screw with a motor saves space, eliminates components, and reduces cost. While many standard configurations are available, custom modifications for OEM customers are welcome.

BUILD A PART NUMBER

08AW101ACX06-LW4-EL



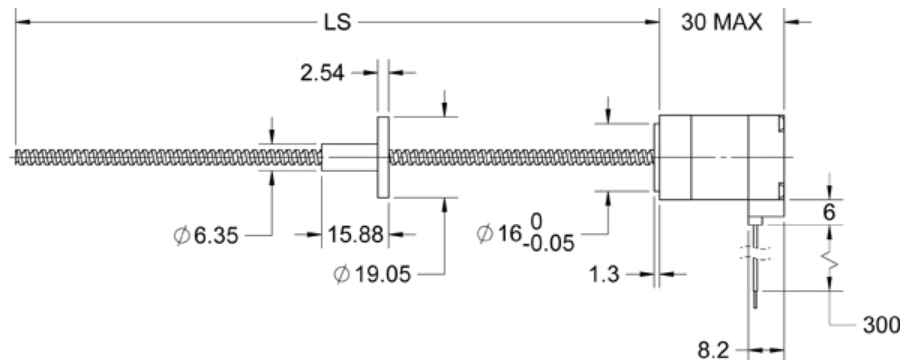
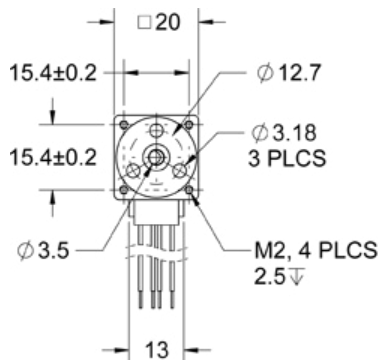
Note: See *Accessories* on our website for optional encoder and/or connector adders.

L011430

Motor Specifications							
Model Number	Voltage (V)	Bipolar Current (A)	Resistance (ohms)	Inductance (mH)	Number of Leads	Motor Weight (lbs)	Motor Length (mm)
08AW101	2.5	0.49	5.1 ± 10%	1.0 ± 20%	4	0.9	30

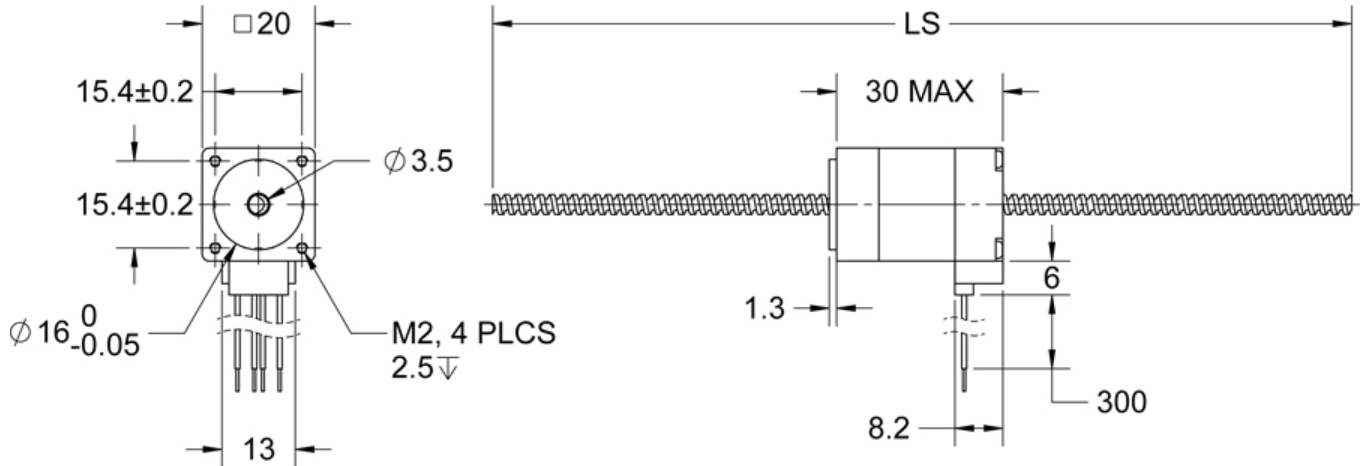
Leadscrew Thread Dimension (mm)			
Code	Diameter	Step	Lead
AC	3.5	0.01	2.00
N	3.5	0.003048	0.6096

External Linear (EL)



Units in mm

Non-Captive (NC)



Units in mm

