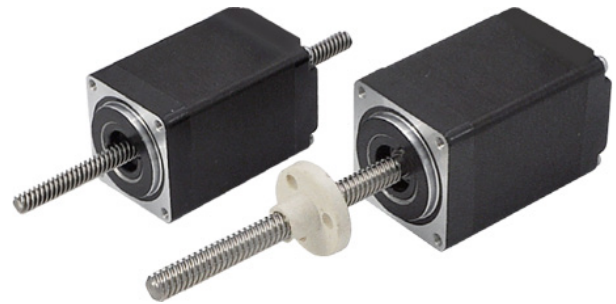


# 11AW Stepper Linear Actuators



## FEATURES

- NEMA Size 11
- Motor Winding Options Available
- Custom Lead Screw Lengths
- Stepper Motor with Internal Nut
- Self Contained Package with Ball Bearings
- 1.8° Step Angle
- 0.00635mm or 0.0254mm Per Full Step



## DESCRIPTION

Anaheim Automation's 11AW Linear Stepper Motors are designed to be the most versatile linear positioning motors on the market. These robust linear actuators, available in non-captive or external linear options, use a NEMA 11 hybrid stepper motor, and can be easily configured to solve difficult application problems. Integration of a lead screw with a motor saves space, eliminates components, and reduces cost. While many standard configurations are available, custom modifications for OEM customers are welcome.

## BUILD A PART NUMBER

# 11AW1021X06-LW4-EL

Frame	
NEMA 11	

102	32mm Motor Length 0.7A Rated Current
202	46mm Motor Length 0.7A Rated Current

Travel Per Step (mm)	
1	0.0254
9	0.00635

Lead Screw Length "LS" (in)	
06	6"
12	12"
18	18"

# Of Lead Wires	
LW4	4

Type	
EL	External Linear
NC	Non-Captive
C	Captive

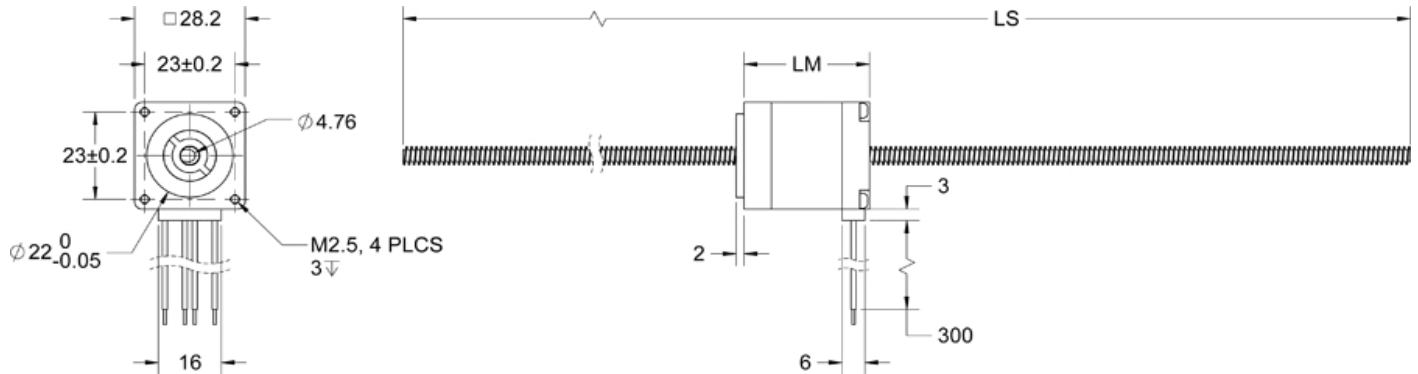
**Note:** See *Accessories* on our website for optional encoder and/or connector adders.

L011507

Motor Specifications							
Model Number	Voltage (V)	Bipolar Current (A)	Resistance (ohms)	Inductance (mH)	Number of Leads	Motor Weight (lbs)	Motor Length "LM" (mm)
11AW102	3.9	0.7	5.6 ± 10%	3.4 ± 20%	4	0.26	32.2
11AW202	4.8	0.7	6.8 ± 10%	4.9 ± 20%	4	0.39	45.9

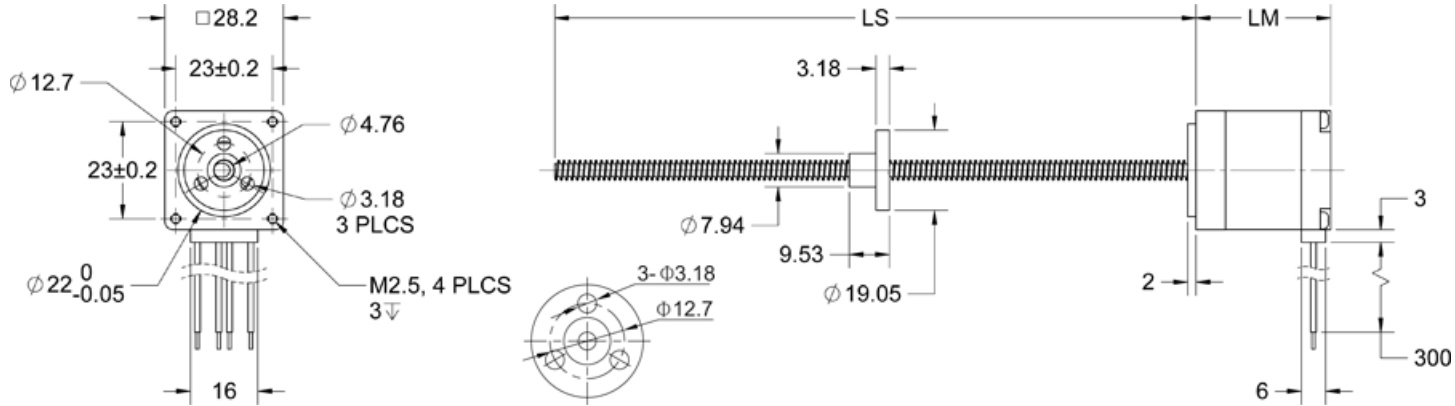
Leadscrew Thread Dimension (mm)			
Code	Diameter	Step	Lead
1	4.76	0.0254	5.08
9	4.76	0.00635	1.27

**Non-Captive (NC)**



Units are in Millimeters

**External Linear (EL)**



Units are in Millimeters

