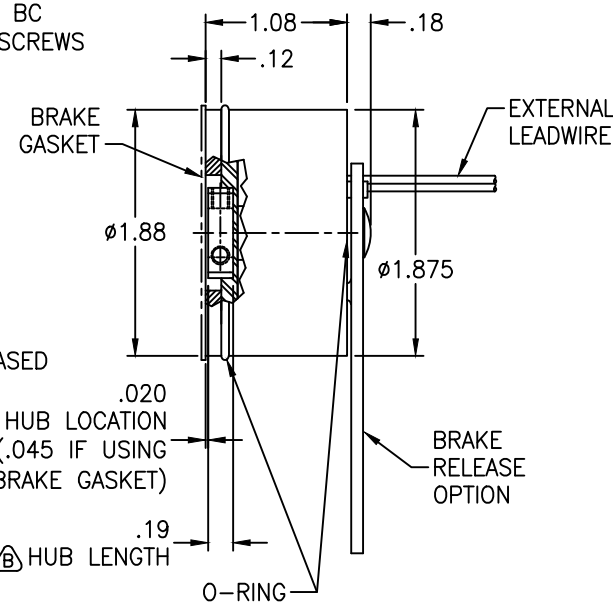
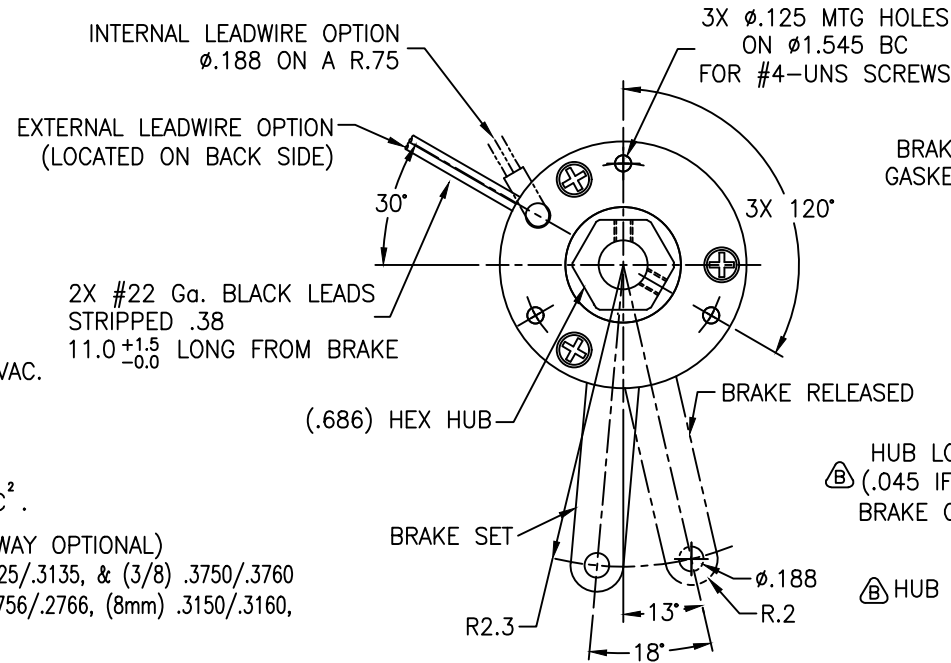


RECOMMENDED SHAFT END FOR 5/16 FLATTED SHAFT OPTION
WHEN USING BRAKE GASKET ADD .025 TO SHAFT LENGTH DIM'S

RECOMMENDED SHAFT END FOR 3/8 FLATTED SHAFT OPTION
WHEN USING BRAKE GASKET ADD .025 TO SHAFT LENGTH DIM'S

- NOTES:
1. STATIC TORQUE: 5 LB-IN (HOLDING)
 2. WATTAGE/VOLTAGE:
9 WATTS/12, 24, 48, & 90 VDC, 115 & 230 VAC.
 3. MAXIMUM THRU-SHAFT SIZE: .375.
 4. WEIGHT: .4 POUNDS.
 5. HUB AND DISC INERTIA: 7.02×10^{-5} OZ-IN-SEC².
 6. STRAIGHT HUB BORE DIAMETER STANDARD: (KEYWAY OPTIONAL)
INCH: (3/16) .1875/.1885, (1/4) .2500/.2510, (5/16) .3125/.3135, & (3/8) .3750/.3760
METRIC: (5mm) .1969/.1979, (6mm) .2362/.2372, (7mm) .2756/.2766, (8mm) .3150/.3160, (9mm) .3543/.3553



F			
E			
D			
C			
B	M7582	06/03/10	MO
A	M7443	04/16/09	MO
REVISIONS	DATE	BY	

DRAWING NUMBER B3-22-2501-00	REXNORD INDUSTRIES, LLC STEARNS DIVISION CUDAHY, WI 53110		TITLE BRAKE OUTLINE 1.2 AAB-R, 5 LB-IN INTERNAL MOUNTING	
	By accepting this drawing the recipient acknowledges and stipulates that product designs disclosed are proprietary and belong solely to REXNORD CORP. All rights of design or invention are reserved.		PLOT SCALE: 1:1	PRODUCT 322-2 SERIES BRAKE
	DRAWN M. OLSON	DATE 04/16/09	SUPERSEDES DRAWING NO.	
	APPROVED	DATE	DWG. SIZE B	REV. B
	CHECKED	DATE	3-22-2501-00	