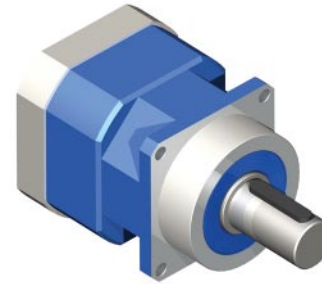


FEATURES

- Backlash as low as 5 arc-min
- Gear ratios from 3 to 100
- Available in 1 and 2 stage models
- Long wear life, over 20,000
- Lifetime lubrication
- High durability



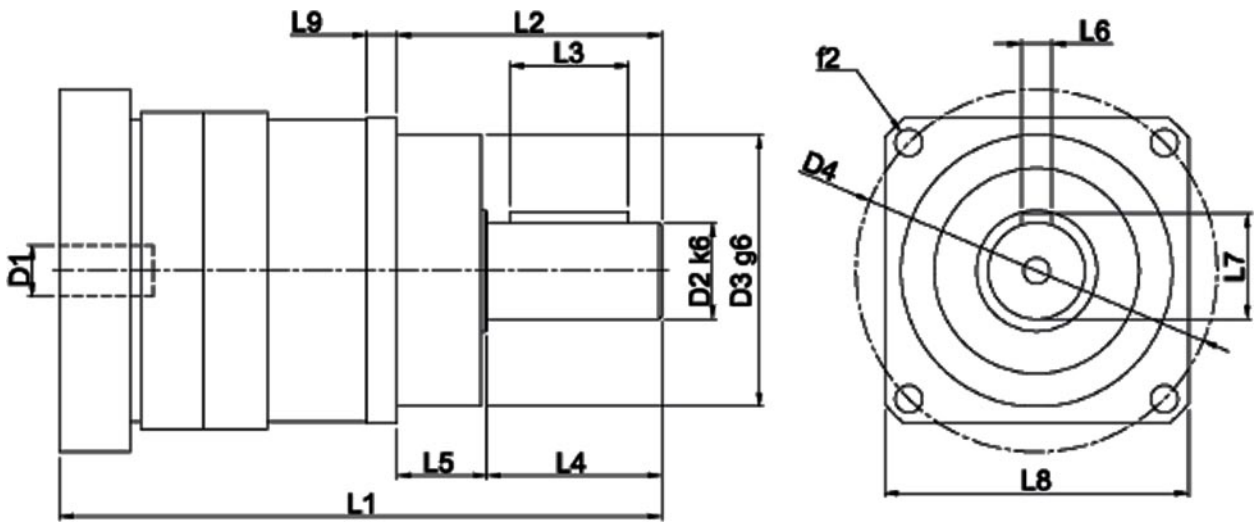
DESCRIPTION

The GBPC-140-NP Series Planetary Gearbox offers you the precision you need at the prices you want! This Planetary Gearbox is designed with very low backlash for motion control, automation, and robotic applications requiring precise position requirements. This Planetary Gearbox will match your servo or stepping motor. Built with the design goal of offering a cost effective product without sacrificing quality, you will find that this Planetary Gearbox offers you an extraordinary value. You will find online prices on this website along with all the information you need to know to select the perfect Planetary Gearbox for your applications.

SPECIFICATIONS

| Model #                    | Gear Ratio (X:1) | Rated Output Torque (oz-in) | Max Output Torque (oz-in) | Rated Input Speed (RPM) | Maximum Input Speed (RPM) | Stages | Backlash Maximum (arcmin) | L1 Length (mm) | L2 Length (mm) | Weight (lbs) |
|----------------------------|------------------|-----------------------------|---------------------------|-------------------------|---------------------------|--------|---------------------------|----------------|----------------|--------------|
| GBPC-1401-NP-003-yyyyy-zzz | 3                | 29744                       | 141600                    | 3800                    | 5500                      | 1      | 5                         | 292            | 112            | 42.6         |
| GBPC-1401-NP-004-yyyyy-zzz | 4                | 48144                       | 178416                    | 3800                    | 5500                      | 1      | 5                         | 292            | 112            | 42.6         |
| GBPC-1401-NP-005-yyyyy-zzz | 5                | 48144                       | 178416                    | 3800                    | 5500                      | 1      | 5                         | 292            | 112            | 42.6         |
| GBPC-1401-NP-007-yyyyy-zzz | 7                | 48144                       | 178416                    | 3800                    | 5500                      | 1      | 5                         | 292            | 112            | 42.6         |
| GBPC-1401-NP-010-yyyyy-zzz | 10               | 29744                       | 141600                    | 3800                    | 5500                      | 1      | 5                         | 292            | 112            | 42.6         |
| GBPC-1402-NP-012-yyyyy-zzz | 12               | 56640                       | 178416                    | 3800                    | 5500                      | 2      | 5                         | 342            | 112            | 51.4         |
| GBPC-1402-NP-016-yyyyy-zzz | 16               | 56640                       | 178416                    | 3800                    | 5500                      | 2      | 5                         | 342            | 112            | 51.4         |
| GBPC-1402-NP-020-yyyyy-zzz | 20               | 56640                       | 178416                    | 3800                    | 5500                      | 2      | 5                         | 342            | 112            | 51.4         |
| GBPC-1402-NP-025-yyyyy-zzz | 25               | 56640                       | 178416                    | 3800                    | 5500                      | 2      | 5                         | 342            | 112            | 51.4         |
| GBPC-1402-NP-035-yyyyy-zzz | 35               | 56640                       | 178416                    | 3800                    | 5500                      | 2      | 5                         | 342            | 112            | 51.4         |
| GBPC-1402-NP-040-yyyyy-zzz | 40               | 56640                       | 178416                    | 3800                    | 5500                      | 2      | 5                         | 342            | 112            | 51.4         |
| GBPC-1402-NP-050-yyyyy-zzz | 50               | 56640                       | 178416                    | 3800                    | 5500                      | 2      | 5                         | 342            | 112            | 51.4         |
| GBPC-1402-NP-070-yyyyy-zzz | 70               | 56640                       | 178416                    | 3800                    | 5500                      | 2      | 5                         | 342            | 112            | 51.4         |
| GBPC-1402-NP-100-yyyyy-zzz | 100              | 35408                       | 141600                    | 3800                    | 5500                      | 2      | 5                         | 342            | 112            | 51.4         |

\* yyyyy denotes motor pilot, zzz denotes input shaft diameter, see "Matching the Gearbox to Your Motor" on the next page. L010571



|       |       |    |           |       |       |
|-------|-------|----|-----------|-------|-------|
| L3    | 70mm  | L4 | 82mm      | L5    | 30mm  |
| L6    | 12mm  | L7 | 43mm      | L8**  | 141mm |
| L9    | 12mm  | D1 | 32 - 38mm | D2 k6 | 40mm  |
| D3 g6 | 130mm | D4 | 165mm     | f2    | 11mm  |

\*\* depending on motor, value may vary.

|                        |                  |              |                  |
|------------------------|------------------|--------------|------------------|
| Radial Load:           | 2475 lbs - Force | Axial Load:  | 2385 lbs - Force |
| Operating Temperature: | -4° - 194° F     | Noise Level: | under 67 dB      |
| Efficiency:            | 96%              | IP Rating:   | IP65             |

### Matching the Gearbox to Your Motor

There are a few details that you need to consider before purchasing a gearbox. The gearbox must be manufactured to match the motor's bolt hole circle, pilot diameter, shaft diameter, and shaft length. This is handled by a code in the last two sections of the part number. For instance, in the part number GBPC-1401-NP-003-AAyy1-zzz, the "AAyy1" is for an Anaheim Automation NEMA yy Motor pilot and the shaft length. The "zzz" is for the shaft diameter of 0.zzz". For non standard Anaheim Automation or custom motors contact factory for complete part number.

| Parameter            | Range  | Typical              |
|----------------------|--|----------------------|
| Input Shaft Diameter | Stage 1: 1 mm to 38 mm<br>Stage 2: 1 mm to 34 mm     | 32 mm shaft diameter |
| Input Shaft Length   | 11 mm to 112 mm                                      | "AAyy1" - zzz"       |
| Pilot                | Stage 1: 28 mm to 300 mm<br>Stage 2: 34 mm to 300 mm | "AAyy1" - zzz"       |
| Bolt Hole Circle     | 1 mm to 350 mm                                       | "AAyy1" - zzz"       |

DIMENSION

SPECIFICATIONS