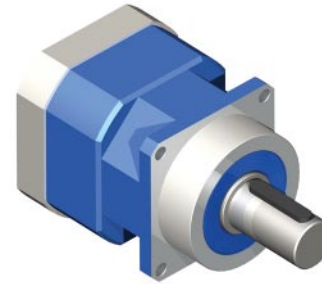


# GBPC-180x-NP Series



## FEATURES

- Backlash as low as 4 arc-min
- Gear ratios from 3 to 100
- Available in 1 and 2 stage models
- Long wear life, over 20,000
- Lifetime lubrication
- High durability



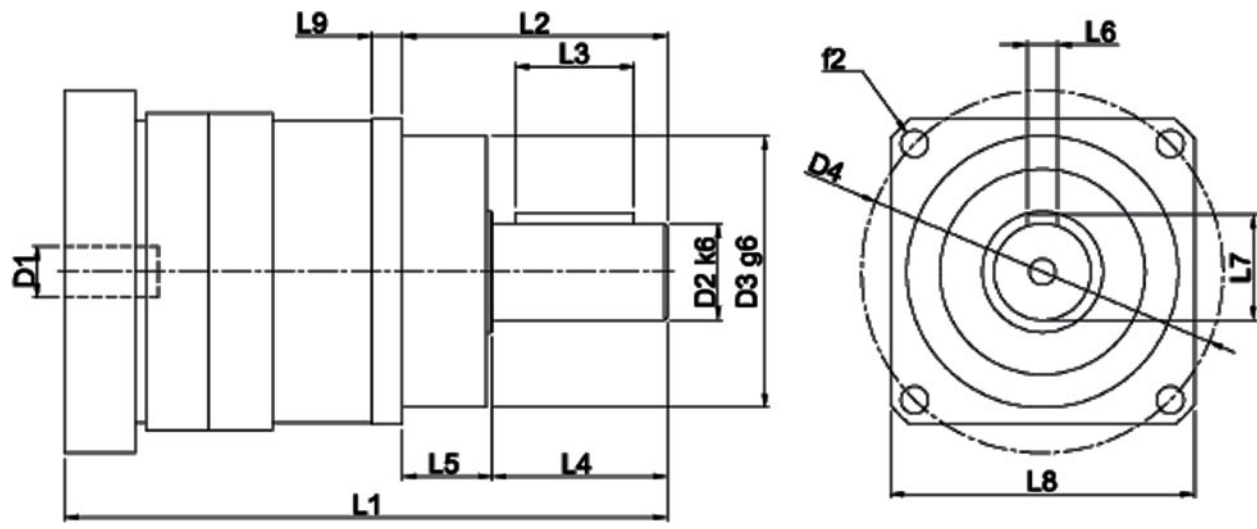
## DESCRIPTION

The GBPC-180-NP Series Planetary Gearbox offers you the precision you need at the prices you want! This Planetary Gearbox is designed with very low backlash for motion control, automation, and robotic applications requiring precise position requirements. This Planetary Gearbox will match your servo or stepping motor. Built with the design goal of offering a cost effective product without sacrificing quality, you will find that this Planetary Gearbox offers you an extraordinary value. You will find online prices on this website along with all the information you need to know to select the perfect Planetary Gearbox for your applications.

## SPECIFICATIONS

Model #	Gear Ratio (X:1)	Rated Output Torque (oz-in)	Max Output Torque (oz-in)	Rated Input Speed (RPM)	Maximum Input Speed (RPM)	Stages	Backlash Maximum (arcmin)	L1 Length (mm)	L2 Length (mm)	Weight (lbs)
GBPC-1801-NP-003-yyyyy-zzz	3	84960	261968	2000	3500	1	4	312	100	71
GBPC-1801-NP-004-yyyyy-zzz	4	84960	346928	2000	3500	1	4	312	100	71
GBPC-1801-NP-005-yyyyy-zzz	5	84960	346928	2000	3500	1	4	312	100	71
GBPC-1801-NP-007-yyyyy-zzz	7	84960	346928	2000	3500	1	4	312	100	71
GBPC-1801-NP-010-yyyyy-zzz	10	84960	396480	2000	3500	1	4	312	100	71
GBPC-1802-NP-012-yyyyy-zzz	12	84960	346928	2000	3500	2	4	334	100	81
GBPC-1802-NP-016-yyyyy-zzz	16	84960	346928	2000	3500	2	4	334	100	81
GBPC-1802-NP-020-yyyyy-zzz	20	84960	346928	2000	3500	2	4	334	100	81
GBPC-1802-NP-025-yyyyy-zzz	25	84960	346928	2000	3500	2	4	334	100	81
GBPC-1802-NP-035-yyyyy-zzz	35	84960	346928	2000	3500	2	4	334	100	81
GBPC-1802-NP-040-yyyyy-zzz	40	84960	346928	2000	3500	2	4	334	100	81
GBPC-1802-NP-050-yyyyy-zzz	50	84960	346928	2000	3500	2	4	334	100	81
GBPC-1802-NP-070-yyyyy-zzz	70	84960	346928	2000	3500	2	4	334	100	81
GBPC-1802-NP-100-yyyyy-zzz	100	84960	396480	2000	3500	2	4	334	100	81

\* yyyyy denotes motor pilot, zzz denotes input shaft diameter, see "Matching the Gearbox to Your Motor" on the next page. L010573



L3	63mm	L4	82mm	L5	14mm
L6	16mm	L7	60mm	L8**	180mm
L9	14mm	D1	38 - 54mm	D2 k6	55mm
D3 g6	160mm	D4	215mm	f2	13mm

\*\* depending on motor, value may vary.

Radial Load:	2925 lbs - Force	Axial Load:	3038 lbs - Force
Operating Temperature:	-4° - 194° F	Noise Level:	under 70 dB
Efficiency:	96%	IP Rating:	IP65

### Matching the Gearbox to Your Motor

There are a few details that you need to consider before purchasing a gearbox. The gearbox must be manufactured to match the motor's bolt hole circle, pilot diameter, shaft diameter, and shaft length. This is handled by a code in the last two sections of the part number. For instance, in the part number GBPC-1801-NP-003-AAyy1-zzz, the "AAyy1" is for an Anaheim Automation NEMA yy Motor pilot and the shaft length. The "zzz" is for the shaft diameter of 0.zzz". For non standard Anaheim Automation or custom motors contact factory for complete part number.

Parameter	Range	Typical
Input Shaft Diameter	Stage 1: 1 mm to 54 mm Stage 2: 1 mm to 40 mm	54 mm shaft diameter
Input Shaft Length	12 mm to 100 mm	"AAyy1" - zzz"
Pilot	Stage 1: 54 mm to 300 mm Stage 2: 38 mm to 300 mm	"AAyy1" - zzz"
Bolt Hole Circle	1 mm to 350 mm	"AAyy1" - zzz"