

Motion Ballscrews SCI Series



FEATURES

- 16mm to 63mm Screw Diameters
- 4mm to 10mm Leads
- Dynamic Loads to to 6,719 kgf
- Static Loads up to 25,358 kgf
- Available in Left and Right helix
- C7 Standard Accuracy
- P1 Standard Preload
- Other Accuracies and Preloads Available Upon Request

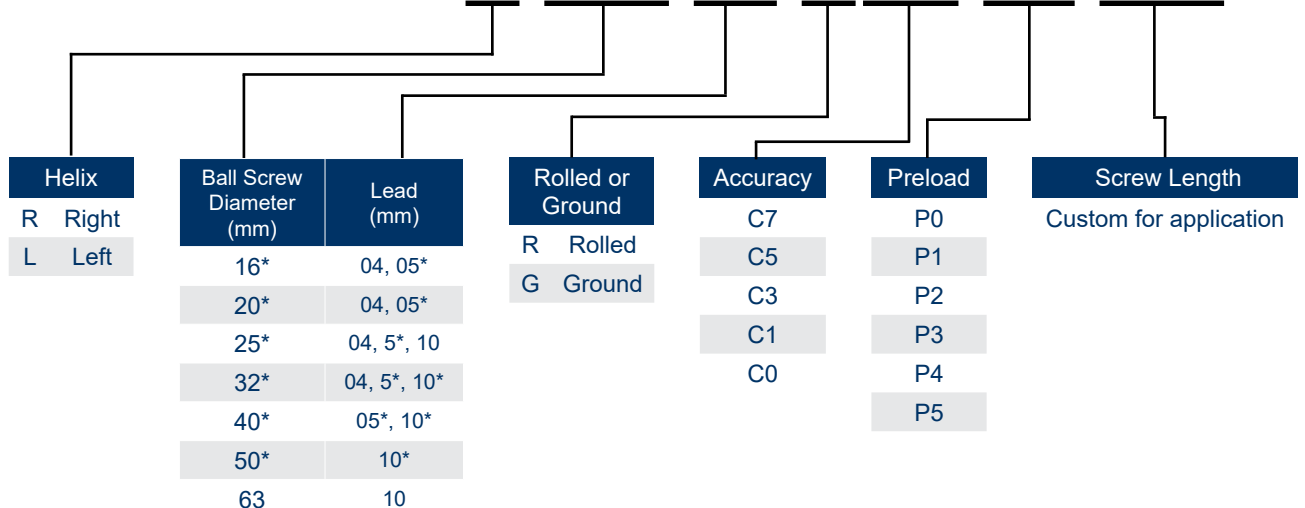


DESCRIPTION

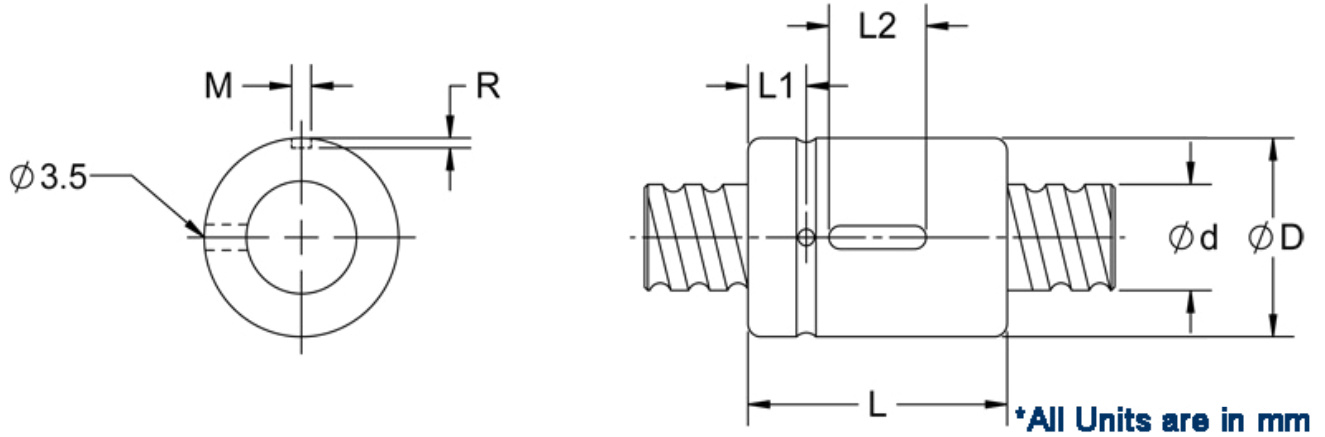
The SCI Series screw has a diameter of 16-63mm with a 4-10mm lead. This assembly provides a dynamic force of 6,719 kgf and a static forces up to 25,358 kgf. The maximum screw length is 7,000mm. The ends of the screw can be customized per your drawing. Please contact Anaheim Automation to discuss your specific requirements.

PART NUMBER LAYOUT

BSC-AAM-SCIR-016-04-R C7-P1-750



L010978 * =Also available in Left Helix



Model No.	d	l	Da	D	L	L1	L2	M	R	n	Ca	Coa	K	H*
BSC-AAM-SCIR-016-04	16	4	2.381	30	40	9	15	3	1.5	1x4	973	2406	32	R
BSC-AAM-SCIR-016-05	16	5	3.175	30	45	9	20	5	3	1x4	1380	3052	33	R/L
BSC-AAM-SCIR-020-04	20	4	2.381	34	40	9	15	3	1.5	1x4	1066	2987	37	R
BSC-AAM-SCIR-020-05	20	5	3.175	34	45	9	20	5	3	1x4	1551	3875	39	R/L
BSC-AAM-SCIR-025-04	25	4	2.381	40	40	9	15	3	1.5	1x4	1180	3795	43	R
BSC-AAM-SCIR-025-05	25	5	3.175	40	45	9	20	5	3	1x4	1724	4904	45	R/L
BSC-AAM-SCIR-025-10	25	10	4.762	46	85	13	30	5	3	1x4	2954	7295	51	R
BSC-AAM-SCIR-032-04	32	4	2.381	46	40	9	15	3	1.5	1x4	1296	4838	49	R
BSC-AAM-SCIR-032-05	32	5	3.175	46	45	9	20	5	3	1x4	1922	6343	52	R/L
BSC-AAM-SCIR-032-10	32	10	6.35	54	85	13	30	5	3	1x4	4805	12208	62	R/L
BSC-AAM-SCIR-040-05	40	5	3.175	56	45	9	20	5	3	1x4	2110	7988	59	R/L
BSC-AAM-SCIR-040-10	40	10	6.35	62	85	13	30	5	3	1x4	5399	15500	72	R/L
BSC-AAM-SCIR-050-10	50	10	6.35	72	85	13	30	5	3	1x4	6004	19614	83	R/L
BSC-AAM-SCIR-063-10	63	10	6.35	85	85	13	30	6	3.5	1x4	6719	25358	95	R

Units are in mm

*PLEASE NOTE - Each standard ball screw includes **one** nut. Additional nuts will be considered a custom request, and will require creation of a special part number.