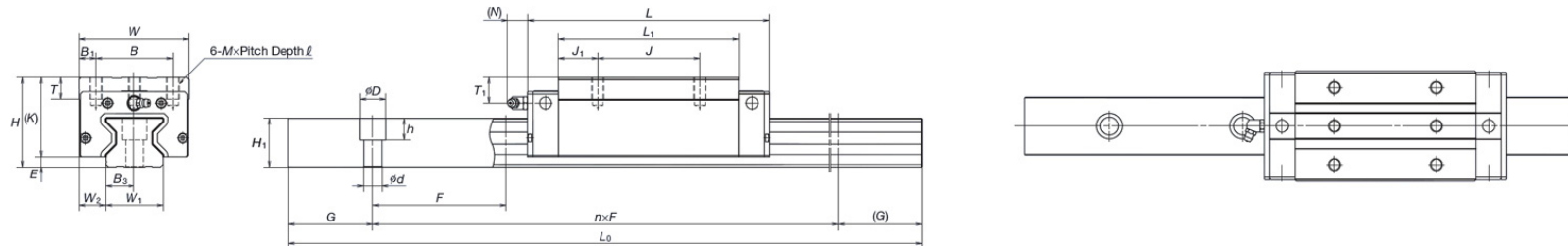


NSK-RA15 - Linear Guides

Rail Part Number	Rail Dimensions (mm)							Weight (lbs)
	W ₁	H ₁	G	F	d x D x h	B ₃	Rail Length (mm)	
NSK-R1A15L-0150-15-15	15	16.3	20	60	4.5x7.5x5.3	7.5	150	0.5
NSK-R1A15L-0300-30-30	15	16.3	20	60	4.5x7.5x5.3	7.5	300	1.1
NSK-R1A15L-0500-10-10	15	16.3	20	60	4.5x7.5x5.3	7.5	500	1.8
NSK-R1A15L-0700-20-20	15	16.3	20	60	4.5x7.5x5.3	7.5	700	2.5
NSK-R1A15L-0900-30-30	15	16.3	20	60	4.5x7.5x5.3	7.5	900	3.2
NSK-R1A15L-1100-10-10	15	16.3	20	60	4.5x7.5x5.3	7.5	1100	3.9
NSK-R1A15L-1300-20-20	15	16.3	20	60	4.5x7.5x5.3	7.5	1300	4.6
NSK-R1A15L-1500-30-30	15	16.3	20	60	4.5x7.5x5.3	7.5	1500	5.3
NSK-R1A15L-1700-10-10	15	16.3	20	60	4.5x7.5x5.3	7.5	1700	6.0
NSK-R1A15L-1900-20-20	15	16.3	20	60	4.5x7.5x5.3	7.5	1900	6.7
NSK-R1A15L-2000L	15	16.3	20	60	4.5x7.5x5.3	7.5	2000	7.1

AN, AL Square Type

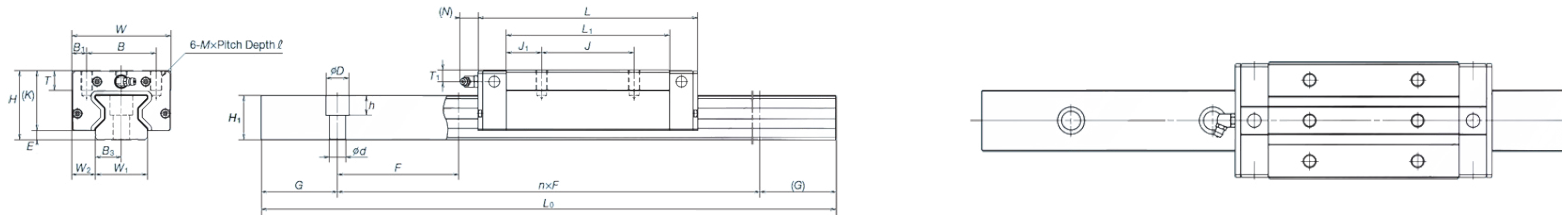


Block Part Number	Fabrication Dimension (mm)		Block Dimensions (mm)											Load Capacities (kN)		Static Moment (Nm)			Weight (lbs)	
	H	W ₂	W	L	L1	B	B1	E	J1	T1	N	J	K	T	C	C ₀	Mr ₀	Mp ₀		My ₀
NSK-RAA15ANP6Z	28	9.5	34	70	44.8	26	4	4	9.4	8	3	26	24	8	10.3	27.5	260	210	210	0.46
NSK-RAA15ALP6Z	24	9.5	34	70	44.8	26	4	4	9.4	4	3	26	20	8	10.3	27.5	260	210	210	0.37

The rated load capacities and static moment values are calculated according to the ISO Standards (ISO14728-1) for linear guides. If the above basic dynamic load rating (100km) is converted into 50km rating, use the formula: $C_{50km} = 1.23 \times C_{100km}$. With the RA series, the dynamic load rating is the same in both the vertical and horizontal directions (4-way load specifications).

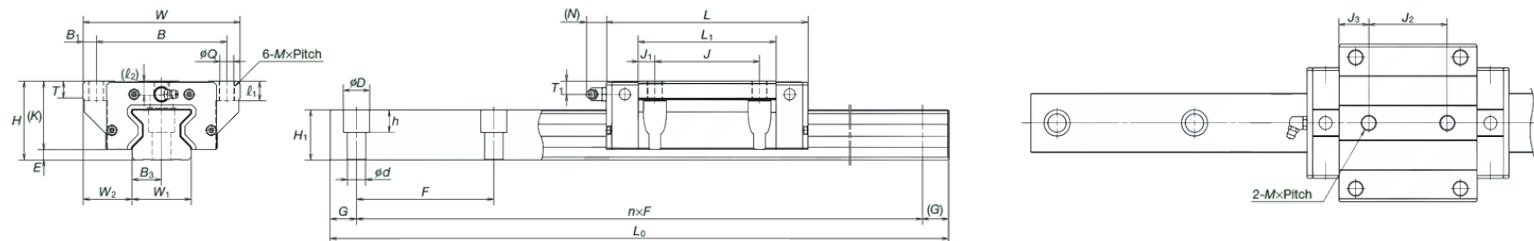
Distributed by Anaheim Automation, Inc.
 USA Stock in Anaheim, CA
 1-800-345-9401
www.anaheimautomation.com

BN, BL, Low-Profile Type



Block Part Number	Fabrication Dimension (mm)		Block Dimensions (mm)												Load Capacities (kN)		Static Moment (Nm)			Weight (lbs)
	H	W ₂	W	L	L1	B	B1	E	J1	T1	N	J	K	T	C	C ₀	Mr ₀	Mp ₀	My ₀	
NSK-RAA15BNP6Z	28	9.5	34	85.4	60.2	26	4	4	17.1	8	3	26	24	8	13	37	350	375	375	0.66
NSK-RAA15BLP6Z	24	9.5	34	85.4	60.2	26	4	4	17.1	4	3	26	20	8	13	37	350	375	375	0.55

EM, GM Flange Type



Block Part Number	Fabrication Dimension (mm)		Block Dimensions (mm)												Load Capacities (kN)		Static Moment (Nm)			Weight (lbs)
	H	W ₂	W	L	L1	B	B1	E	J1	T1	N	J	K	T	C	C ₀	Mr ₀	Mp ₀	My ₀	
NSK-RAA15EMP6Z	24	16	47	70	44.8	38	4.5	4	7.4	4	3	30	20	8	10.3	27.5	260	210	210	0.46
NSK-RAA15GMP6Z	24	16	47	85.4	60.2	38	4.5	4	15.1	4	3	30	24	8	13	37	350	375	375	0.62