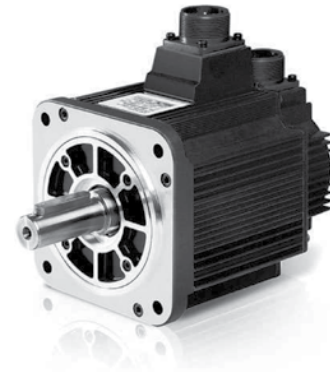


# EML-40 Servo Motor

## FEATURES

- Torque Rating of 5,438 oz-in
- Medium Inertia to Maximize Torque
- Peak Torque up to 300% of Rated Torque
- Peak Current up to 300% of Rated Current
- Speed of up to 1,500 RPM
- 2,500 PPR Incremental Encoder Attached
- Totally Enclosed, Self-Cooled
- Power Rating up to 4.0 kWatts
- Oil Seal, and Optional Brake
- Long Life and Highly Reliable
- Neodymium-Iron-Boron Magnets (NdFeB)
- CE Certified



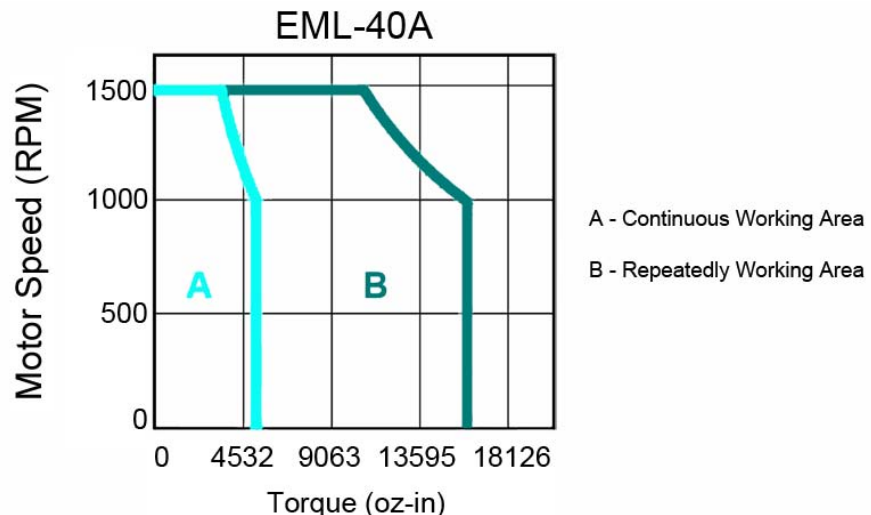
## DESCRIPTION

Anaheim Automation's Digital AC Servo Motors offer a simple solution to servo applications involving speed and positioning control. The AC EML-40 Servo Motor comes standard with a 2,500 Pulses Per Revolution (PPR) Incremental Encoder, runs at a maximum speed of 1,500 RPM, provides peak values up to 300% of the rated torque and current values, and has a rated torque of 5,438 oz-in with a 4.0 kWatt power rating. These enclosed and self-cooled motors also provide longer motor life and higher reliability. The EML-40 AC Servo Motors enable industrial motion control applications with medium inertia to attain a great combination of speed and positioning functionality.

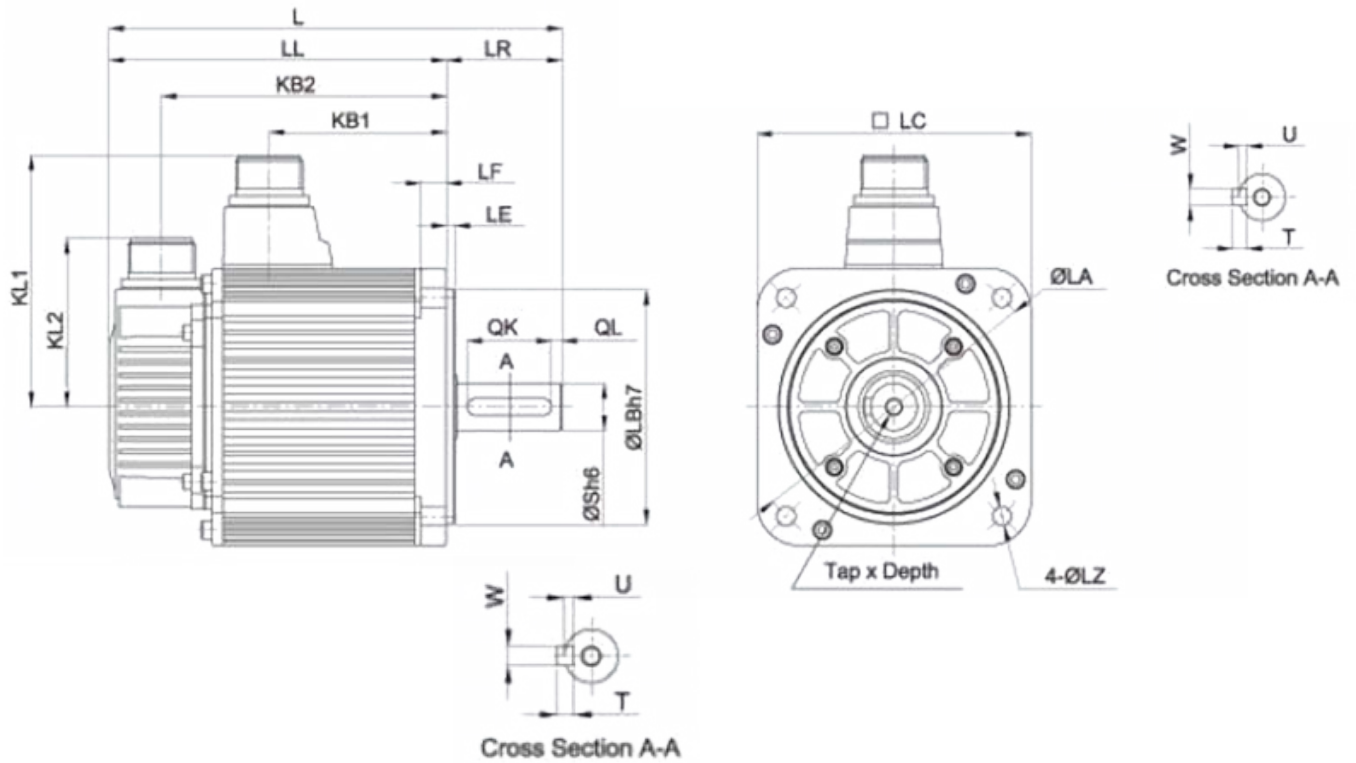
## SPECS

Model #	Rated Torque (oz-in)	Rated Power (Watts)	Rated Speed (rpm)	Max Speed (RPM)	Rated Current (A rms)	Brake (24VDC)	Inertia (oz-in-sec <sup>2</sup> )	Electric Time Constant T <sub>E</sub> (ms)	Back EMF Voltage K <sub>E</sub> (V/krpm)	Torque Constant K <sub>T</sub> (oz-in/A)	Resistance (ohms)	Weight (lbs)
EML-40APA22	5438	4000	1000	1500	24.0	No	1.4473	20.2	118	264.5	0.2	103.62
EML-40APA24	5438	4000	1000	1500	24.0	Yes	1.4926	20.2	118	264.5	0.2	103.62

## TORQUE VS SPEED



L011003

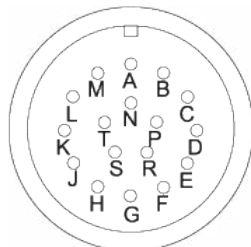


Note: All Dimensions in (mm)

MODEL #	L	LL	KB1	KB2	KL1	KL2	FLANGE SLIDE							S	TapxDepth	KEY				
							LR	LE	LF	LC	LA	LB	LZ			QK	QL	W	T	U
EML-40APA22	412	333	243	308	140	79	79	3.2	18	180	200	114.3	13.5	35	M8x16L	55	6	10	8	5
EML-40APA24	478	399	243	322	140	79	79	3.2	18	180	200	114.3	13.5	35	M8x16L	55	6	10	8	5

**Encoder Connector Specification:**

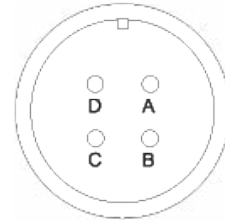
Receptacle	Plug	Cable Clamp	Pin No.	Signal	Color
MS3102A20-29P	MS3108B20-29S	MS3057-12A	A	A+	BLUE
			B	A-	BLUE/BLACK
			C	B+	GREEN/BLACK
			D	B-	GREEN
			E	C+	YELLOW
			F	C-	YELLOW/BLACK
			G	PG 0V	BLACK
			H	PG 5V	RED
			J	FG	SHIELD



**Motor Connector Specification:**

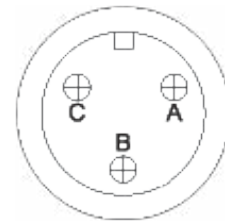
Receptacle	Plug	Cable Clamp
MS3102A22-22P	MS3108B22-22S	MS3057-12A

Pin No.	Signal
A	U
B	V
C	W
D	FG


**Brake Connector Specification:**

Receptacle	Plug	Cable Clamp
MS3102A10SL-3P	MS3106A10SL-3S	MS3057-4A

Pin No.	Signal
A	B1
B	B2
C	--


**Compatible Drivers**

Part Number	Description
PRONET-E-50A	Driver

**Compatible Cables**

Part Number	Description
PDM-GD12-05	Power Cable
BMP-GA24-05	Encoder Cable
PRONET-PSC-CC24-02	Comm. Cable

Power Requirement: 220VAC	Vibration: 49 m/s <sup>2</sup>	Running Air Pressure: 86 to 106 kPa
Insulation Class: F	Ambient Temperature: 20% to 80% RH	Insulation Voltage Endurance: AC 1800V, 50Hz, 1 min
Ambient Temperature: 0°C to 40°C	Running Humidity: Not More Than 90%, Under 25°C	Insulation Impedance: Not Less Than 50M Under Normal Conditions
Running Temperature: -25°C to 40°C		