

11AW Stepper Linear Actuators



FEATURES

- NEMA Size 11
- Motor Winding Options Available
- Custom Lead Screw Lengths
- Stepper Motor with Internal Nut
- Self Contained Package with Ball Bearings
- 1.8° Step Angle
- 0.00635mm or 0.0254mm Per Full Step



DESCRIPTION

Anaheim Automation's 11AW Linear Stepper Motors are designed to be the most versatile linear positioning motors on the market. These robust linear actuators, available in non-captive or external linear options, use a NEMA 11 hybrid stepper motor, and can be easily configured to solve difficult application problems. Integration of a lead screw with a motor saves space, eliminates components, and reduces cost. While many standard configurations are available, custom modifications for OEM customers are welcome.

BUILD A PART NUMBER

11AW1021X06-LW4-EL

Frame	
NEMA 11	

102	32mm Motor Length 0.7A Rated Current
202	46mm Motor Length 0.7A Rated Current

Travel Per Step (mm)	
1	0.0254
9	0.00635

Lead Screw Length "LS" (in)	
06	6"
07	7"
12	12"
13	13"
18	18"

# Of Lead Wires	
LW4	4

Type	
EL	External Linear
NC	Non-Captive
C	Captive

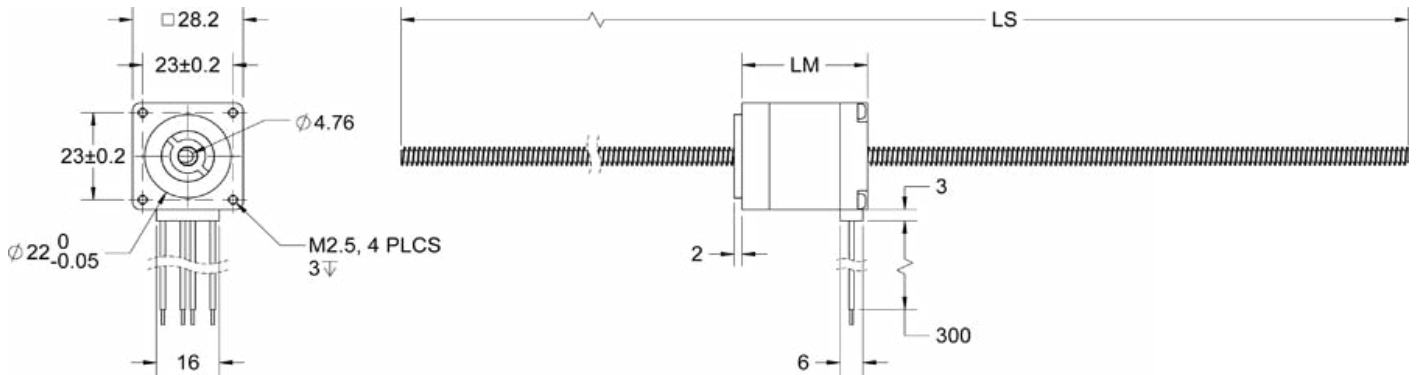
Note: See *Accessories* on our website for optional encoder and/or connector adders.

L011507

Motor Specifications							
Model Number	Voltage (V)	Bipolar Current (A)	Resistance (ohms)	Inductance (mH)	Number of Leads	Motor Weight (lbs)	Motor Length "LM" (mm)
11AW102	3.9	0.7	5.6 ± 10%	3.4 ± 20%	4	0.26	32.2
11AW202	4.8	0.7	6.8 ± 10%	4.9 ± 20%	4	0.39	45.9

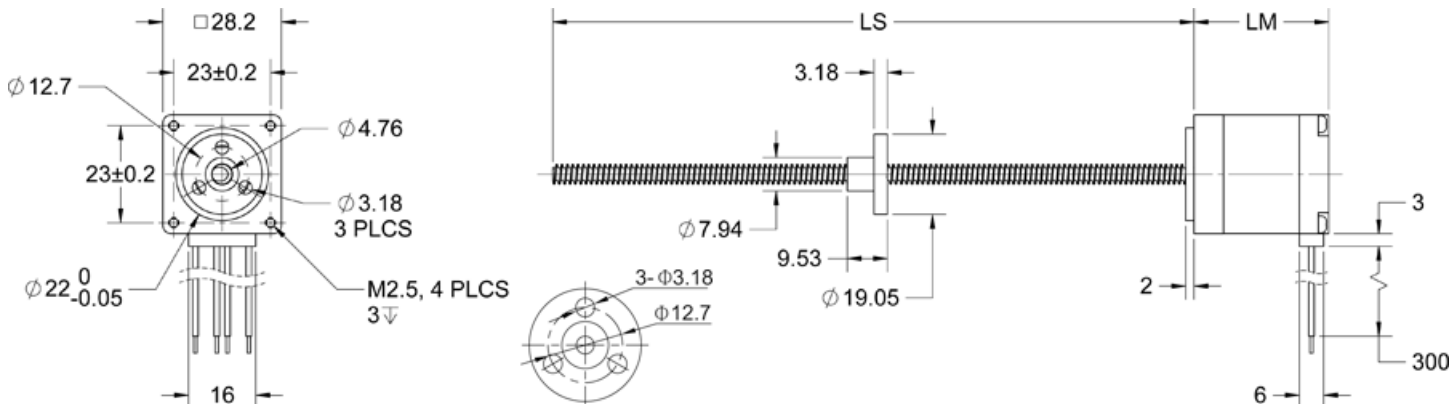
Leadscrew Thread Dimension (mm)			
Code	Diameter	Step	Lead
1	4.76	0.0254	5.08
9	4.76	0.00635	1.27

Non-Captive (NC)

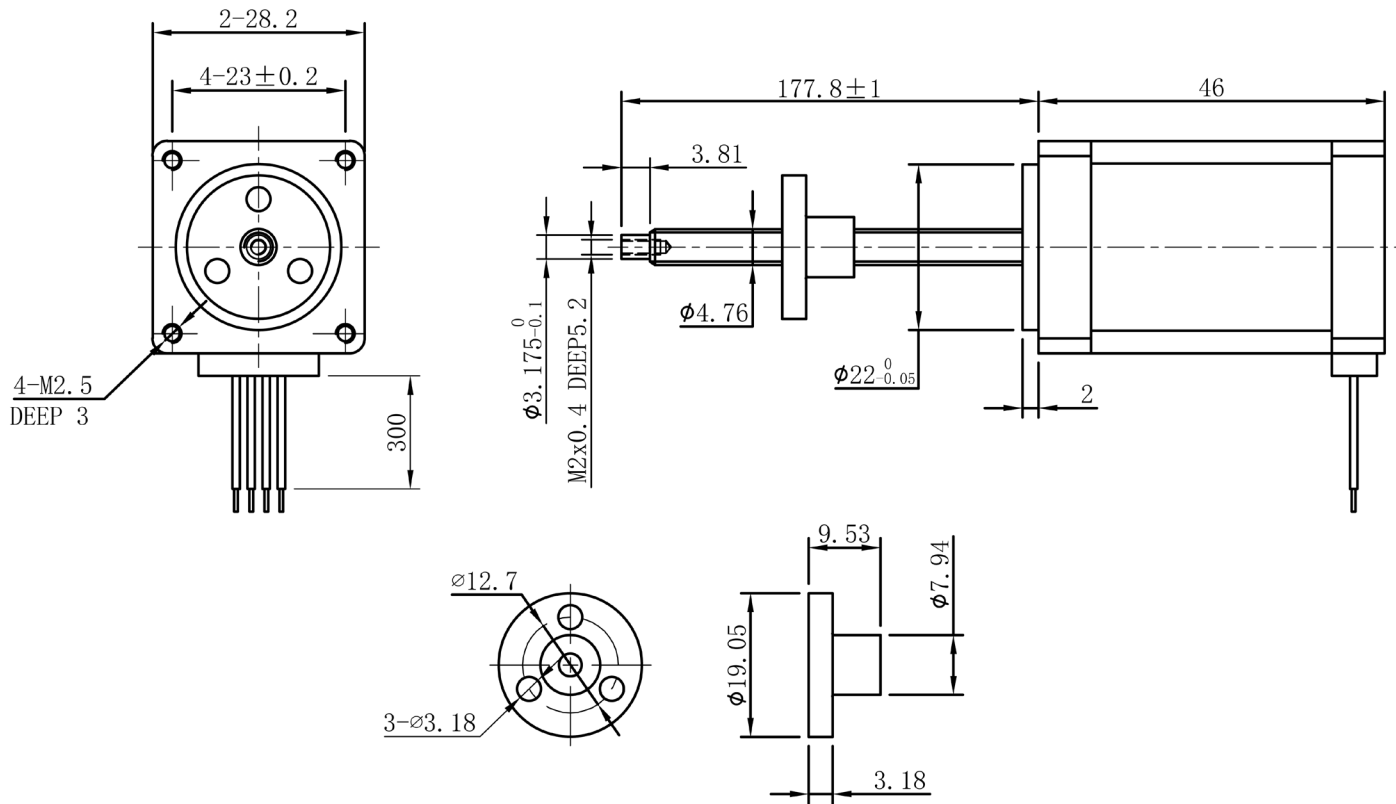


External Linear (EL)

Units are in Millimeters



11AW2021X07-LW4-EL-01



DIMENSIONS

11AW2029X13-LW4-EL-01

Units are in Millimeters

