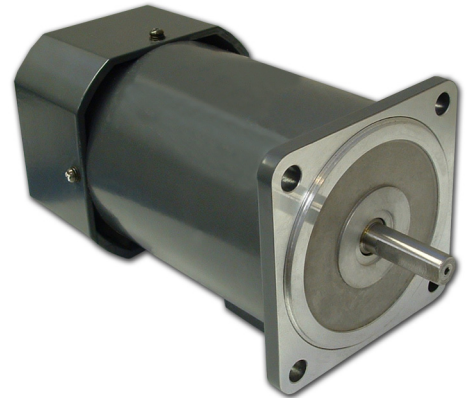


# ACW090-090-140 - Single Phase AC Motor



## FEATURES

- **Single Phase AC Motor**
- **Torque Up to 82 oz-in**
- **90mm Motor Diameter**
- **90 Watts of Power**
- **Can be Customized for**
  - **Winding Current**
  - **Shaft Options**
  - **Cables and Connectors**



## DESCRIPTION

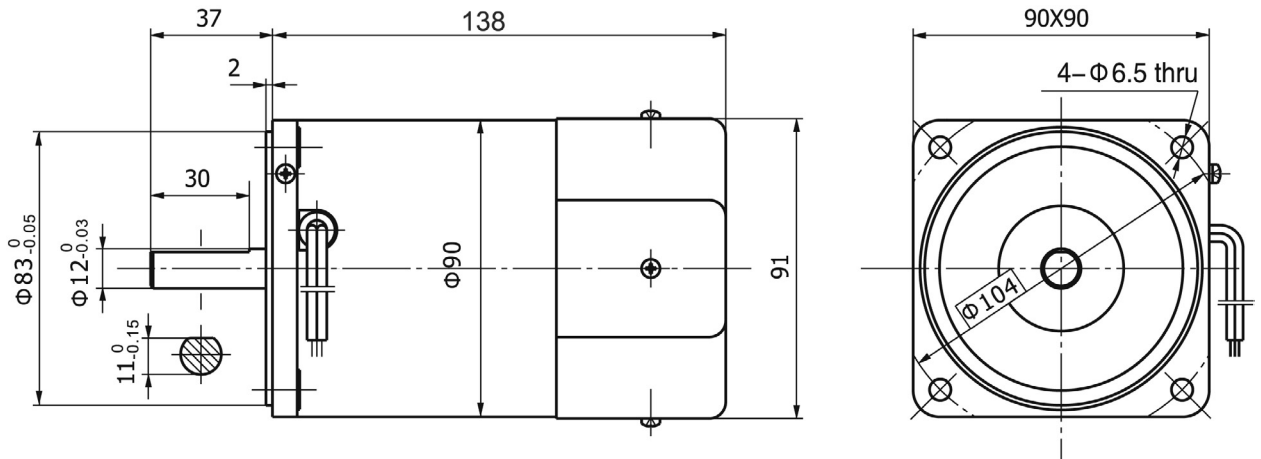
Anaheim Automation's single phase AC motors come in a variety of starting torques, rated torques and current. The ACW090-090-140 AC motor has a starting torque of 82.17 oz-in. They run up to 1550 RPM with single phase 110VAC, 60 Hz. The ACW090-090-140 offers torque ranges up to 82 oz-in. Other models are also available with a gearbox to provide even higher torques. Custom options for the Single Phase AC motor line include optimizing the maximum speed, torque, current, voltage, cabling wiring, connectors, and shaft modifications.

## SPECIFICATIONS

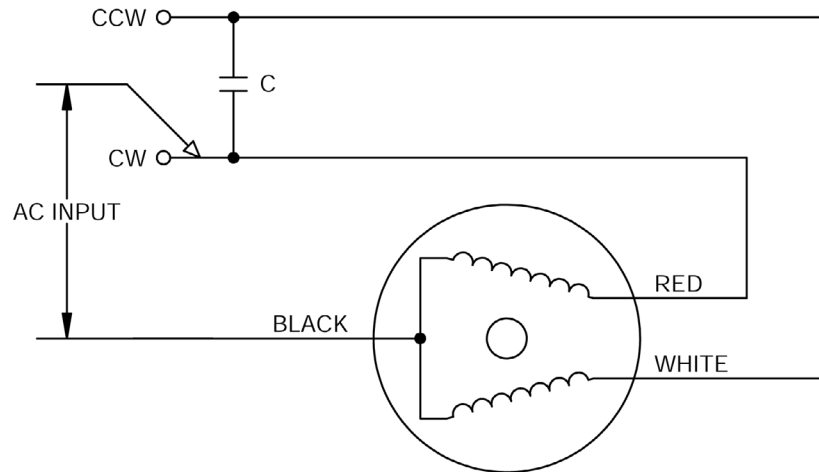
Model #	Input Voltage (VAC)	Power (W)	Current (A)	Motor Speed (RPM)	Start Torque (oz-in)	Rated Torque (oz-in)	Motor Diameter (mm)	Motor Length (mm)	Weight (lbs)
ACW090-090-140-110-1550	110	90	1.55	1550	82.17	63.6	90	140	7.05

L010506

DIMENSIONS



WIRING DIAGRAM



SPECIFICATIONS

Capacitor:	uF/VAC 25 / 250	Phase:	Single-phase
Frequency:	60Hz	AC Motor Type:	Reversible
Radial Play:	99.21 lb - Force @ 20mm	Operating Temperature:	10° F to 131°F
Thrust Play:	22.05lb - Force	Humidity:	90%