

BDWG258 Series DC Brush Gearmotor



FEATURES

- **DC Brush Worm Gearmotor**
- **Designed for High-Volume Applications**
- **Up to 2,124 oz-in. of Rated Torque**
- **79mm Motor Body Diameter**
- **236mm Motor Body Length**
- **Mounting Screws Included**



DESCRIPTION

The BDWG258 Series is designed for high-volume OEM applications with low cost being the primary objective. These reliable low cost Brush DC Worm Gearmotors come in a variety of power levels and sizes, and are fully reversible. The BDWG258 Series is a cost-effective solution to manage motion control in many rotary applications including medical, semiconductor, pumps, robotics, hobby, CNC, and many other applications where a low cost Brush DC Worm Gearmotor is needed.

SPECIFICATIONS

| Model # | Rated Voltage (V) | Rated Current (A) | Max Current (A) | Rated Speed (RPM) | Rated Torque (oz-in) | Max Torque (oz-in) | IP Rating | Weight (lbs) | Torque Curve* |
|------------------------------|-------------------|-------------------|-----------------|-------------------|----------------------|--------------------|-----------|--------------|---------------|
| BDWG258NP-236-12-25-GL-C5-W6 | 12 | 10 | 42 | 25 | 2,124 | 11,329 | IP 53 | 6.61 | 6 |
| BDWG258NP-236-24-25-GL-C5-W6 | 24 | 5 | 21 | 25 | 2,124 | 11,329 | IP 53 | 6.61 | 6 |
| BDWG258NP-236-12-25-GL-C5-W2 | 12 | 10 | 42 | 25 | 2,124 | 11,329 | IP 53 | 6.61 | 6 |
| BDWG258NP-236-24-25-GL-C5-W2 | 24 | 5 | 21 | 25 | 2,124 | 11,329 | IP 53 | 6.61 | 6 |
| BDWG258NP-236-12-40-GL-C5-W2 | 12 | 12 | 55 | 40 | 1,699 | 11,329 | IP 53 | 6.61 | 7 |
| BDWG258NP-236-24-40-GL-C5-W2 | 24 | 6 | 32 | 40 | 1,699 | 11,329 | IP 53 | 6.61 | 7 |
| BDWG258NC-236-12-40-GL-C5-W2 | 12 | 12 | 55 | 40 | 1,699 | 11,329 | IP 53 | 6.61 | 7 |
| BDWG258NC-236-24-40-GL-C5-W2 | 24 | 6 | 32 | 40 | 1,699 | 11,328 | IP 53 | 6.61 | 7 |

* See Torque Curves Section

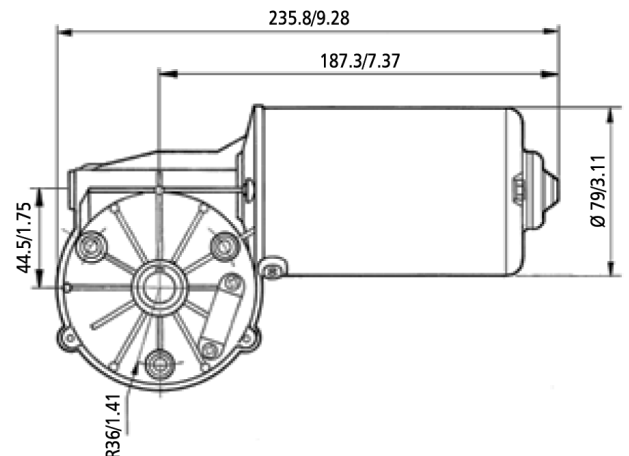
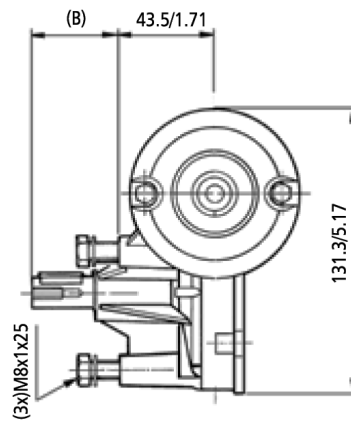
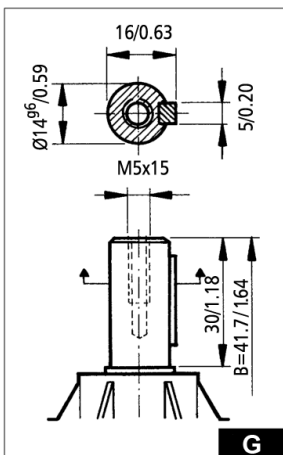
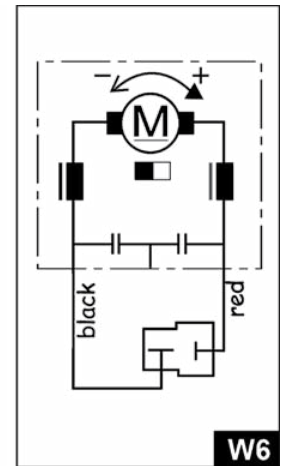
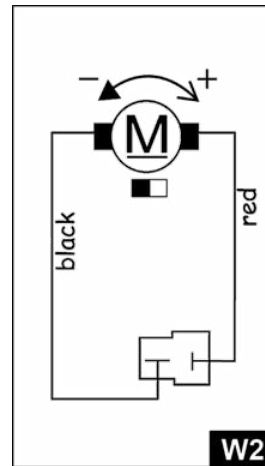
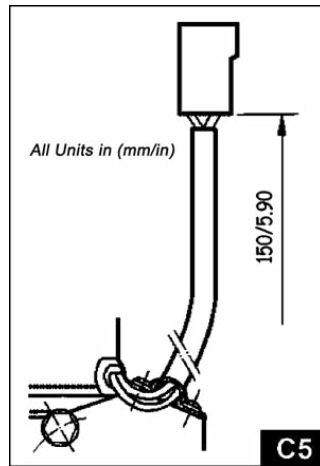
L010800

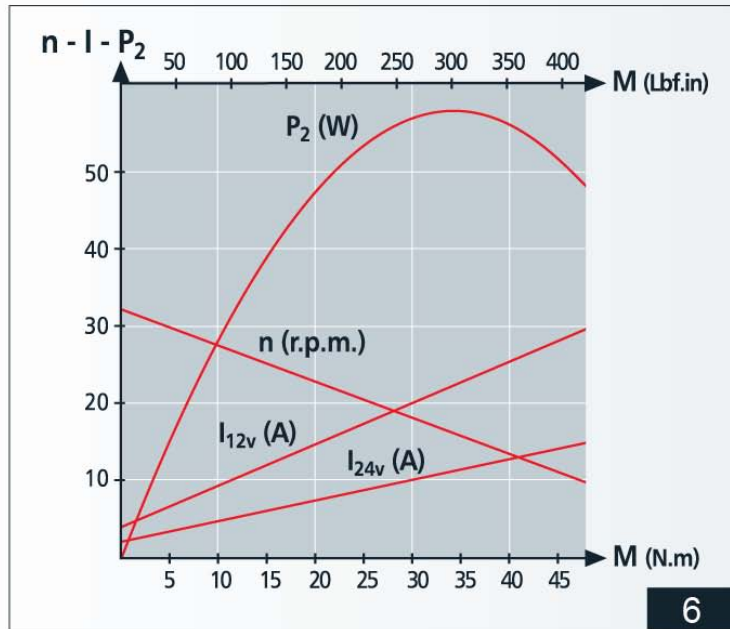
BDWG258 N P - 236 - 12 - 25 - G L - C5 - W2

| | Gear Material | Voltage | RPM | Option | Description |
|---|---------------------|---------|-----|--------|--|
| P | Plastic | 12 | 25 | C5-W2 | Amp Connector, 150mm Length, No Filter |
| C | Resin Bonded Fabric | 24 | 40 | C5-W6 | Amp Connector, 150mm Length, Filter |
| B | Bronze | | | | |

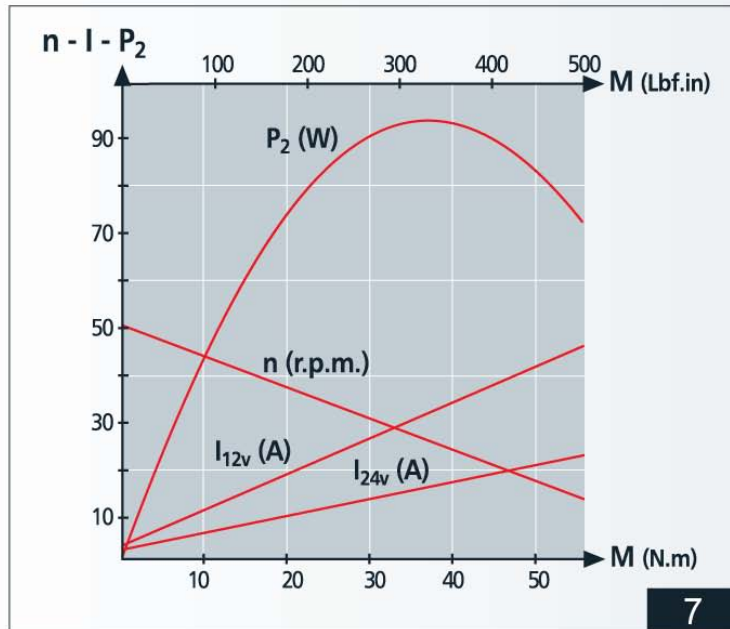
C5 Option Mating Connector:

Plug AMP 180907-0
(2x) Female Terminal 6.35





6



7