

BDWG317 Series DC Brush Gearmotor



FEATURES

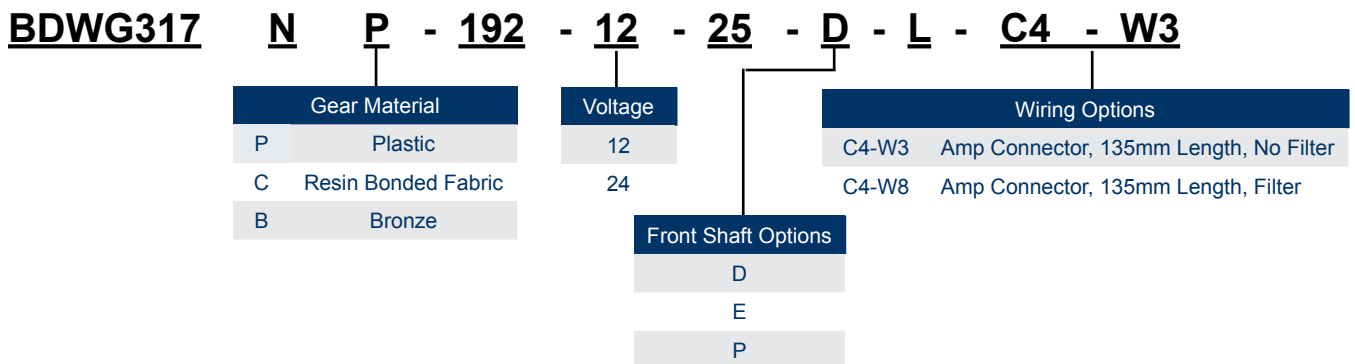
- DC Brush Worm Gearmotor
- Designed for High-Volume Applications
- Up to 566 oz-in of Rated Torque
- 48mm Motor Body Diameter
- 192mm Motor Body Length
- Mounting Screws Included



DESCRIPTION

The BDWG317 Series is designed for high-volume OEM applications with low cost being the primary objective. These reliable low cost Brush DC Worm Gearmotors come in a variety of power levels and sizes, and are fully reversible. The BDWG317 Series is a cost-effective solution to manage motion control in many rotary applications including medical, semiconductor, pumps, robotics, hobby, CNC, and many other applications where a low cost Brush DC Worm Gearmotor is needed.

PART NUMBER BREAKDOWN



SPECIFICATIONS

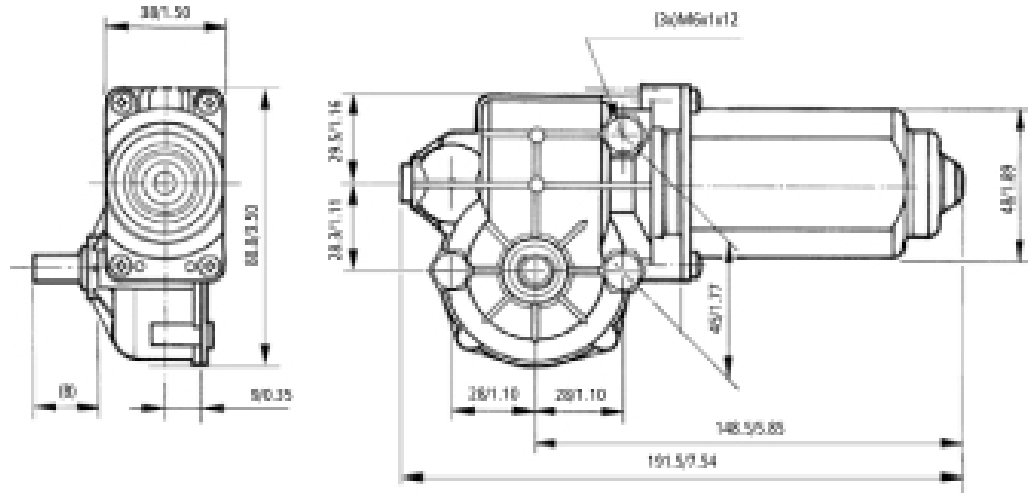
Model #	Rated Voltage (V)	Rated Current (A)	Max Current (A)	Rated Speed (RPM)	Rated Torque (oz-in)	Max Torque (oz-in)	IP Rating	Weight (lbs)	Torque Curve*
BDWG317NP-192-12-25-DL-C4-W3	12	2.5	8	25	566	1,699	IP40	2.53	13
BDWG317NP-192-24-25-DL-C4-W3	24	1.1	4	25	566	1,699	IP40	2.53	13
BDWG317NP-192-12-25-EL-C4-W3	12	2.5	8	25	566	1,699	IP40	2.53	13
BDWG317NP-192-24-25-EL-C4-W3	24	1.1	4	25	566	1,699	IP40	2.53	13
BDWG317NP-192-12-25-EL-C4-W8	12	2.5	8	25	566	1,699	IP40	2.53	13
BDWG317NP-192-24-25-EL-C4-W8	24	1.1	4	25	566	1,699	IP40	2.53	13

*See Torque Curves Section

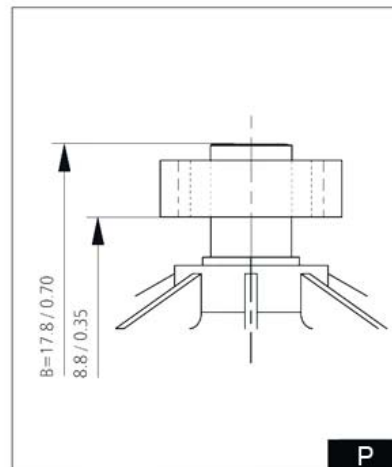
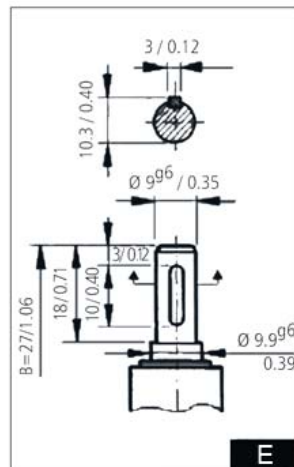
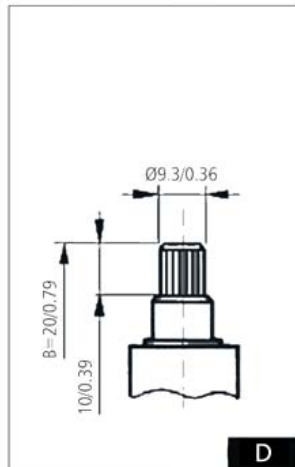
L010803

DIMENSIONS

All units are in mm/in.



SHAFT OPTIONS

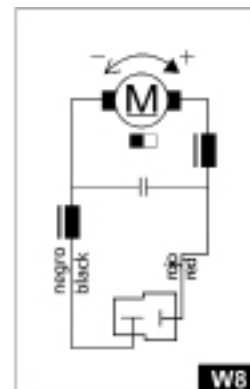
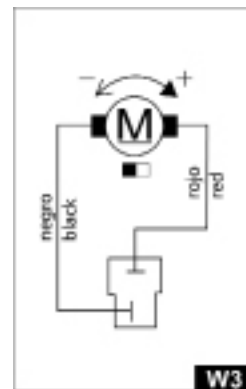
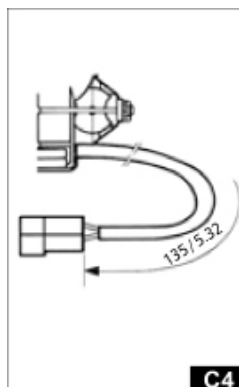


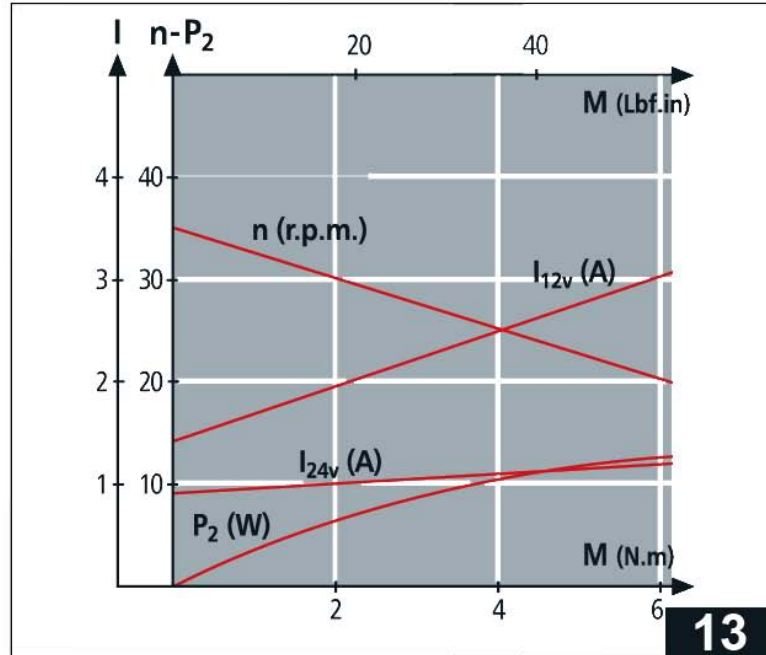
Straight-Toothed Spur Gear Features (P Option)	
Tooth Number	10
Normal Module	1.75
Pressure Angle	20
Outside Diameter	22.32
Pitch Circle Diameter	18.8
Root Diameter	14.41
Tooth Thickness	3.30
Tooth Height	3.94

CONNECTOR/WIRING OPTIONS

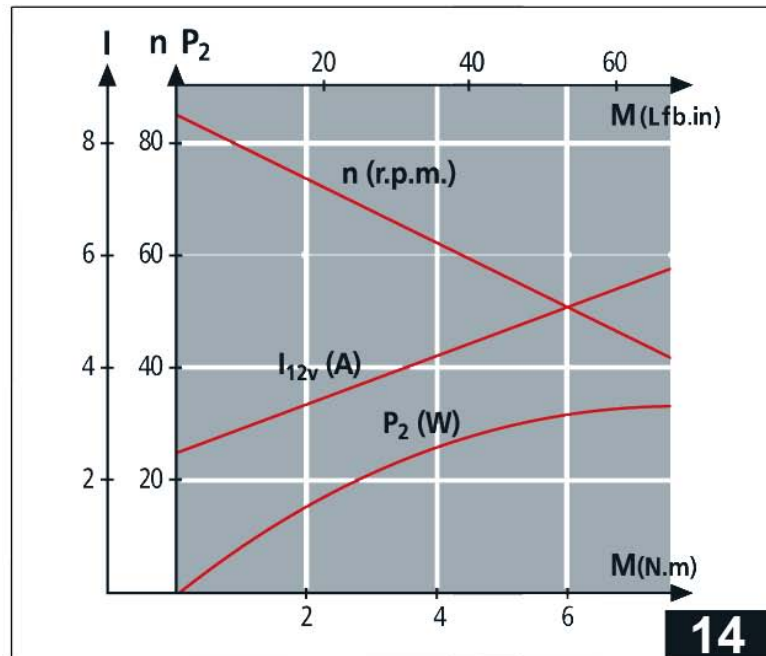
Connector:
Amp, 135mm Length
(2x) Male Terminal 6.35x0.8
(AMP 42241-2)

Housing, 2 Way
(AMP 180.908.0)





13



14