

# BDWG319 Series DC Brush Gearmotor



FEATURES

- DC Brush Worm Gearmotor
- Designed for High-Volume Applications
- Up to 1,274 oz-in of Rated Torque
- 60mm Motor Body Diameter
- 207mm Overall Length
- Mounting Screws Included



DESCRIPTION

The BDWG319 Series is designed for high-volume OEM applications with low cost being the primary objective. These reliable low cost Brush DC Worm Gearmotors come in a variety of power levels and sizes, and are fully reversible. The BDWG319 Series is a cost-effective solution to manage motion control in many rotary applications including medical, semiconductor, pumps, robotics, hobby, CNC, and many other applications where a low cost Brush DC Worm Gearmotor is needed.

SPECIFICATIONS

Model #	Rated Voltage (V)	Rated Current (A)	Max Current (A)	Rated Speed (RPM)	Rated Torque (oz-in)	Max Torque (oz-in)	IP Rating	Weight (lbs)	Torque Curve*
BDWG319NP-207-12-30-FL-C6-W6	12	7	28	30	1,274	7,080	IP65	3.75	15
BDWG319NP-207-24-30-FL-C6-W6	24	3	15	30	1,274	7,080	IP65	3.75	15
BDWG319NP-207-12-30-FL-C6-W3	12	7	28	30	1,274	7,080	IP65	3.75	15
BDWG319NP-207-24-30-FL-C6-W3	24	3	15	30	1,274	7,080	IP65	3.75	15
BDWG319NP-207-12-45-FL-C6-W6	12	6	50	45	1,132	7,080	IP65	3.75	16
BDWG319NP-207-24-45-FL-C6-W6	24	3	25	45	1,274	8,496	IP65	3.75	17
BDWG319NP-207-12-45-FL-C6-W3	12	6	50	45	1,132	5,664	IP65	3.75	16
BDWG319NP-207-24-45-FL-C6-W3	24	3	25	45	1,274	8,496	IP65	3.75	17
BDWG319NP-207-12-65-FL-C6-W3	12	8	40	65	850	5,664	IP65	3.75	21
BDWG319NP-207-24-65-FL-C6-W3	24	4	25	65	850	5,664	IP65	3.75	21
BDWG319NP-207-12-85-FL-C6-W6	12	7	60	85	566	5,664	IP65	3.75	18
BDWG319NP-207-24-85-FL-C6-W6	24	3.5	30	85	566	5,664	IP65	3.75	18
BDWG319NP-207-12-85-FL-C6-W3	12	7	60	85	566	5,664	IP65	3.75	18
BDWG319NP-207-24-85-FL-C6-W3	24	3.5	30	85	566	5,664	IP65	3.75	18
BDWG319NP-207-12-155-FL-C7-W1	12	8	60	155	283	2,832	IP65	3.75	20
BDWG319NP-207-24-175-FL-C7-W1	24	4	30	175	283	2,832	IP65	3.75	20
BDWG319NP-207-24-230-FL-C6-W3	24	4	36	230	312	2,832	IP65	3.75	19
BDWG319RP-207-24-230-FL-C7-W1	24	4	36	230	312	2,832	IP40	3.75	19

\*See Torque Curve Section

L010804

PART NUMBER BREAKDOWN

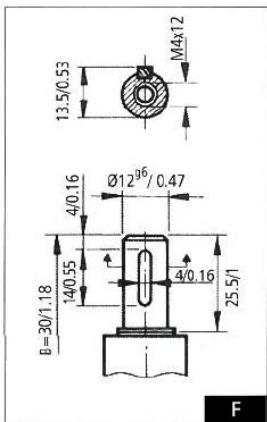
# BDWG319 N P - 207 - 12 - 30 - F - L - C4 - W9

Rear Shaft		Voltage		RPM			
N	No Rear Shaft	12		30	45	65	85
R	Rear Shaft	24		155	175	230	

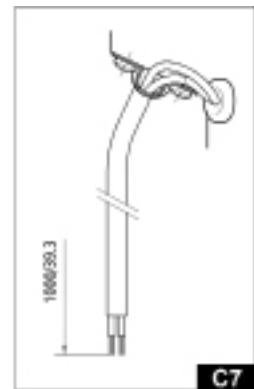
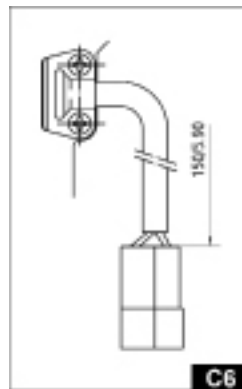
Gear Material	
P	Plastic
C	Resin Bonded Fabric
B	Bronze

Wiring Options	
C6-W3	Amp Connector, 150mm Length, No Filter
C6-W9	Amp Connector, 150mm Length, Filter
C7-W1	Flying Leads, 1,000mm Length, No Filter, No Connector

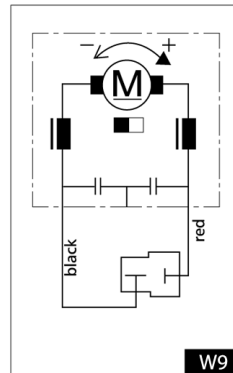
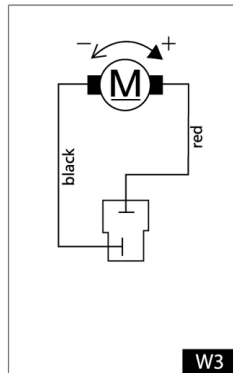
SHAFT/CONNECTOR OPTIONS



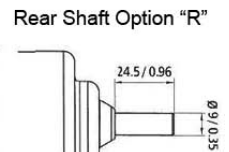
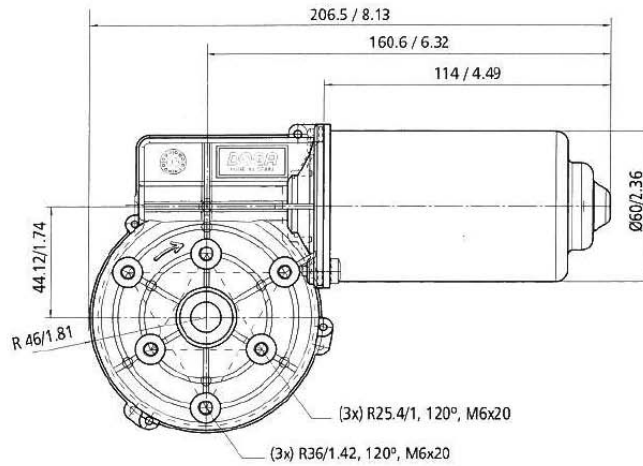
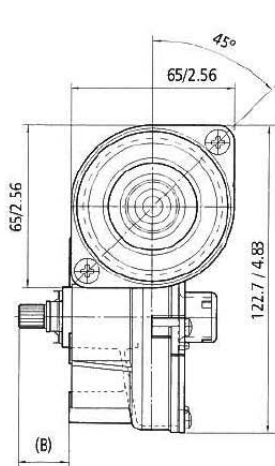
C0 and C2  
**Mating Housing:**  
 AMP 180907  
**Mating Terminal:**  
 AMP 42281-1



WIRING OPTIONS



DIMENSIONS



All units are in mm

