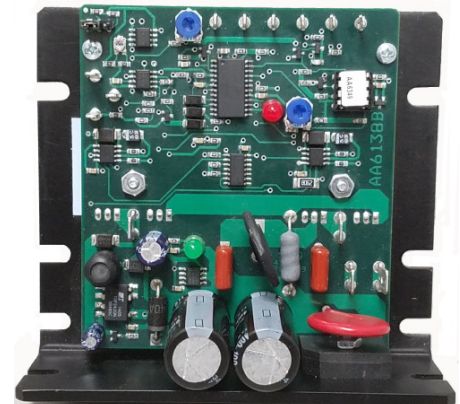


MBDCKB1 - 120081 Brush Speed Controllers



FEATURES

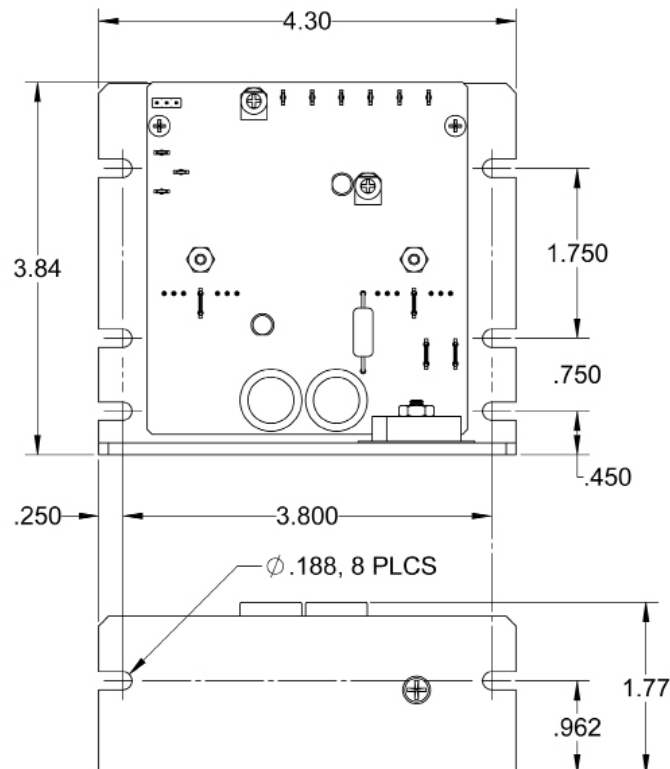
- Maximum Current Limit from 1.0-8.0 Amps (peak)
- External 10K Potentiometer Speed Control
- 2-Quadrant Operation
- Short Circuit Protection
- Requires 85-135 VAC
- Brake, Disable and Direction Inputs
- Jumper selectable setting for 90 -170VDC motors
- Compact Size (4.3"x3.84"x1.77")
- Dual Mounting Option



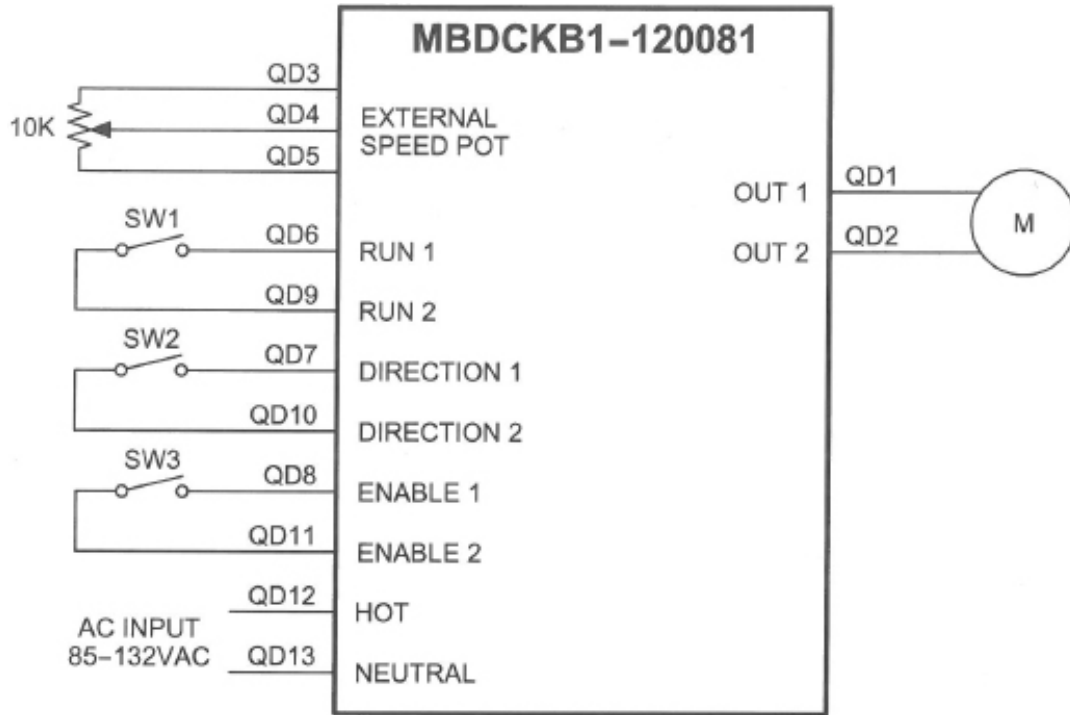
DESCRIPTION

The MBDCKB1-120081 driver is designed to drive DC Brush motor at currents of up to 8A (peak) and 90-180V. The driver is protected against over current (cycle-by-cycle) and under voltage. When an error occurs, a fault light is turned on to notify the user. Internal potentiometers allow the user to control the maximum phase current allowed into the motor, as well as ramp-up timing. An external potentiometer (10K) is used to control the speed as well. The direction of the motor can be preset by the direction control input. Other inputs to the drive include a run/stop and a motor enable input. When using the run/stop input, it overrides all other inputs into the driver.

DIMENSIONS



L011741



Power Requirements:	85 - 135VAC
Output Current Range:	1.0 - 8.0 Amps (Peak) 0.5 - 4.0 Amps (Continuous)
Control Inputs:	External switch compatible
Run/Stop:	QD6 and QD9 Open = Motor will not run and if running will decelerate rapidly Closed = Motor will run
Enable:	QD8 and QD11 Open = Motor is Enabled Closed = Motor is de-energized and will coast
Direction Control:	QD7 and QD10 Open = Counterclockwise Closed = Clockwise
Operating Temperature:	0°C to +70°C

Model #	Description
MBDCKB1-120081	110VAC DC Brushless Driver at 8A
PWR-10EMC1	Dual Stage RFI Power Line Filter