

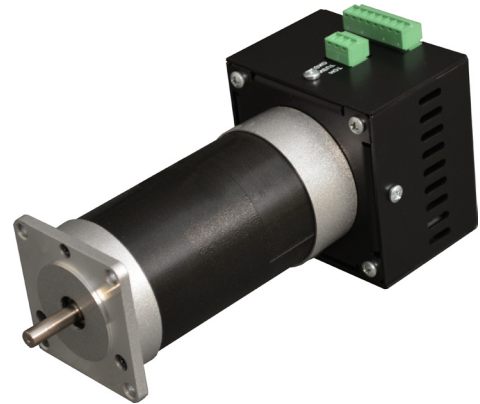
BLWS23MDAxS-160 Offline Series

Integrated Brushless Controller/Motor



FEATURES

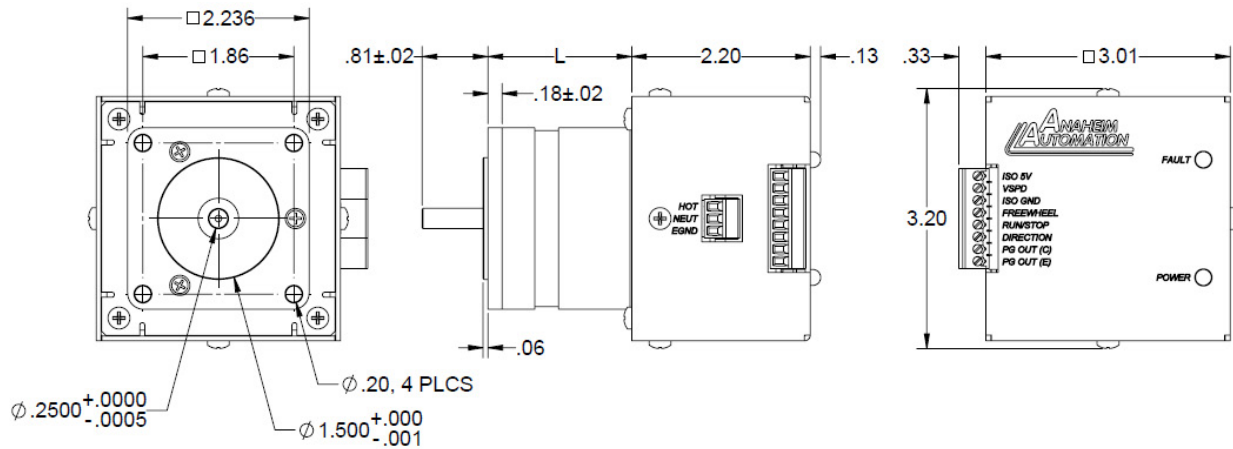
- Requires 85 - 135 VAC Power Input
- Maximum Current Limit at 3.0 Amps
- Constant Velocity Mode
- 0.5 to 5V External Voltage Speed Control
- 2-Quadrant Operation
- Hall Sensor Feedback
- Short Circuit Protection
- Freewheel, Run/Stop and Direction Inputs
- Optically Isolated Inputs and Outputs
- Detachable Screw Type Terminal Blocks
- Motor Frame: 2.3" Square (Similar to NEMA23)



DESCRIPTION

The BLWS23MDAxS-160 Offline Series is a compact construction that implements an Offline Brushless Controller and a DC Brushless Motor in one streamline package. With the two parts combined into one casing, the need to wire the motor has been eliminated. The Offline Brushless Controller operates off 120VAC. The high-speed DC Brushless Motor can operate at 3000 RPM, can generate up to 71 oz-in of continuous torque, and deliver as much as 157W, with the BLWS23MDA5-160V-3000 offering. Using hall sensor feedback, the Offline Brushless Controller operates in a constant velocity mode. The driver is protected against over current (cycle-by-cycle), hall sensor error and under voltage. An external potentiometer (10K) or external voltage (0.5-5VDC) can be used to control the speed. The direction of the motor can be present by the direction control input. A stop function can be done by grounding the Run/Stop input.

DIMENSIONS/RATING SPECS

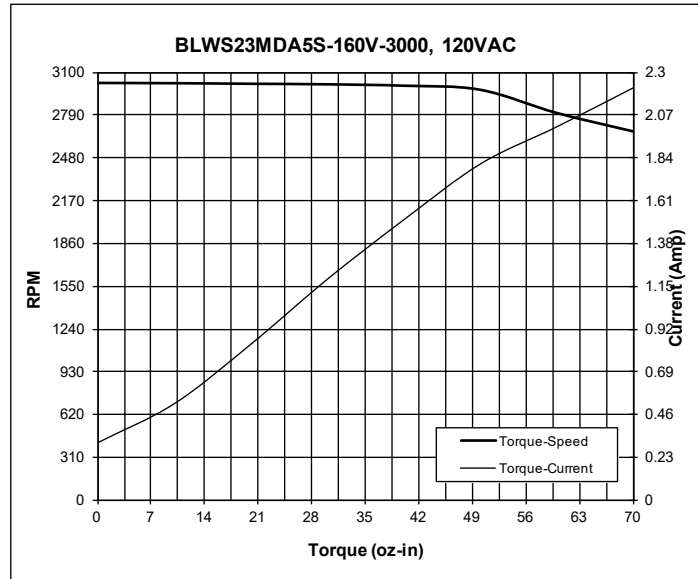


*All units are in inches

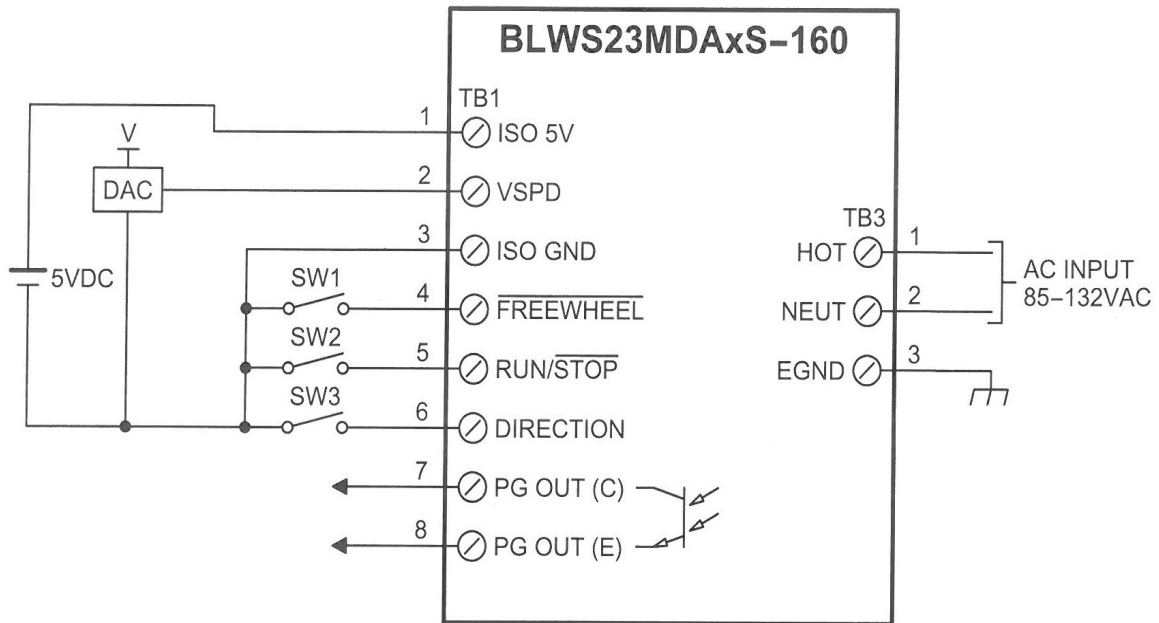
Model #	Motor Frame	Rated Voltage (V)	Rated Speed (RPM)	No Load Speed (RPM)	Rated Torque (oz-in)	Torque Constant (oz-in/A)	Rated Power (W)	Weight (lbs)	L Length (inch)
BLWS23MDA3S-160V-3000	2.3 in. Square	160	3000	4400	31	24	69	1.6	2.89
BLWS23MDA4S-160V-3000	2.3 in. Square	160	3000	4200	46	23.6	103	2.1	3.69
BLWS23MDA5S-160V-3000	2.3 in. Square	160	3000	4600	71	n/a	157	2.6	4.47

L011182

TORQUE CURVE



WIRING INFORMATION/PIN DESCRIPTIONS



Pin #	Description
1	ISO 5V
2	VSPD
3	ISO GND
4	Freewheel
5	Run/Stop
6	Direction
7	PG OUT (C)
8	PG OUT (E)

Pin #	Description
1	AC Line (HOT)
2	AC Neutral
3	Earth GND

TB1: AC Voltage Input Terminals

TB1: Opto-Isolated Control Inputs, Outputs & Speed Control