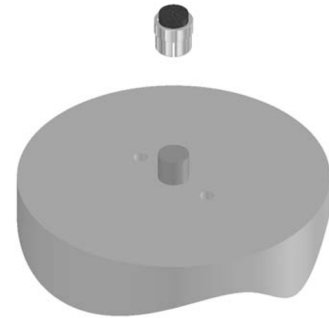


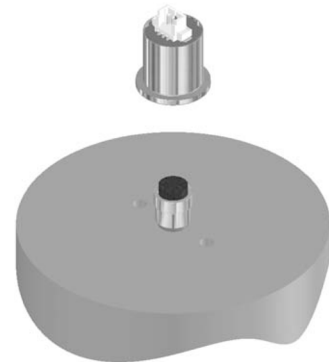
Step 1: Push-on Magnetic Hub Installation

Slip Push-on Magnetic Hub over shaft and firmly press down until top of shaft fills cavity of hub.



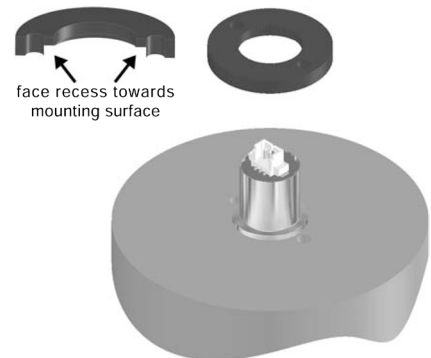
Step 2: Encoder Body Installation

Places Encody Body over shaft assembly so that it sits on mounting surface.



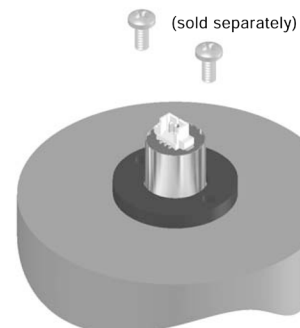
Step 3: Base Installation

With recess in base facing towards mounting surface, place base over Encoder Body so that flange of body fits into recess of base.



Step 4: Fastening Encoder in Place

Secure base to mounting surface with two #4-40 x 1/4" pan head screws (sold separately). If desired, encoder can be powered up and rotated by hand to any desired absolute position before these screws are tightened.



L011703