

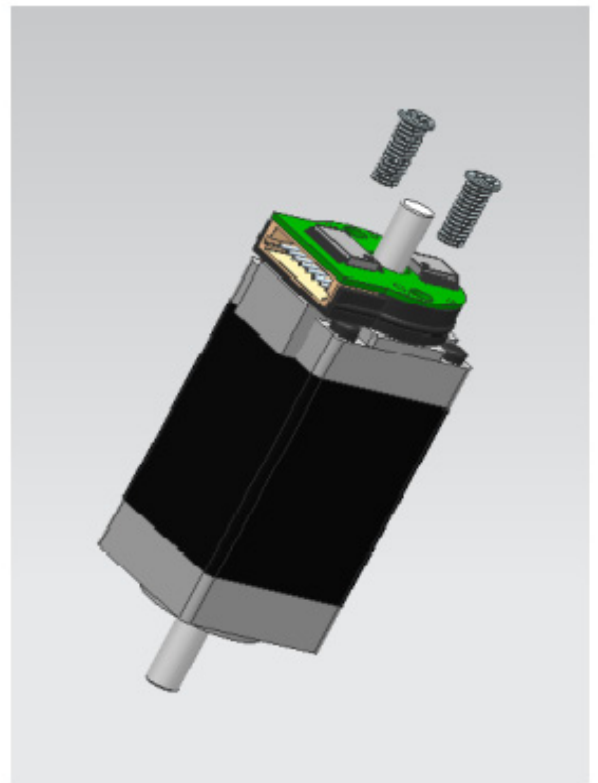
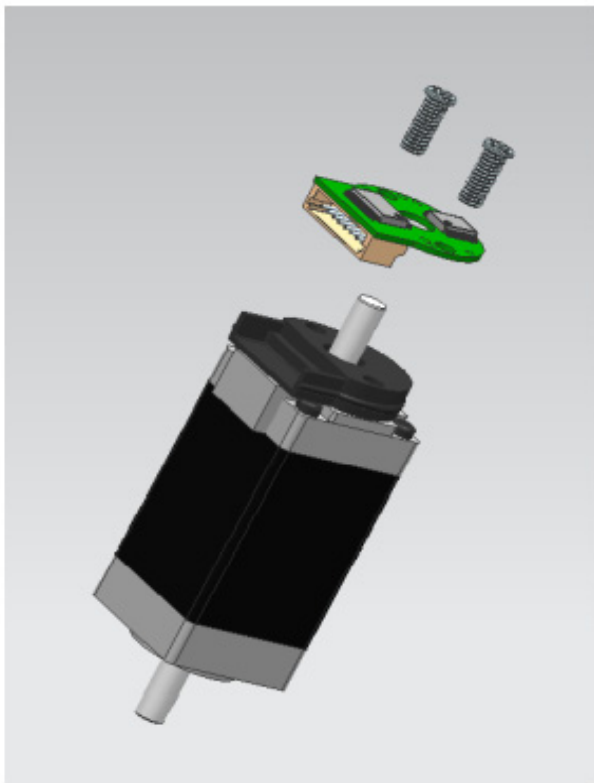
L011952

## Attention - Electrostatic Sensitive Device

### Observe precautions during handling and installation

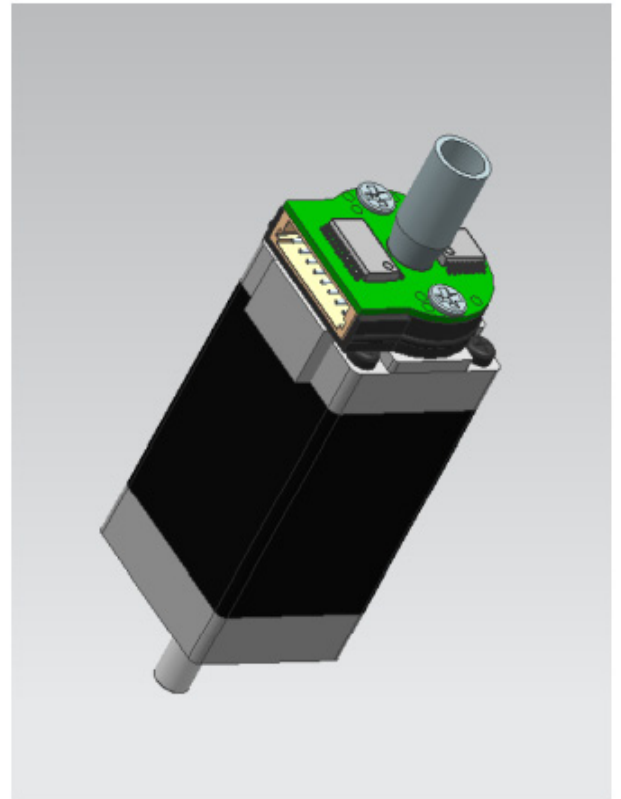
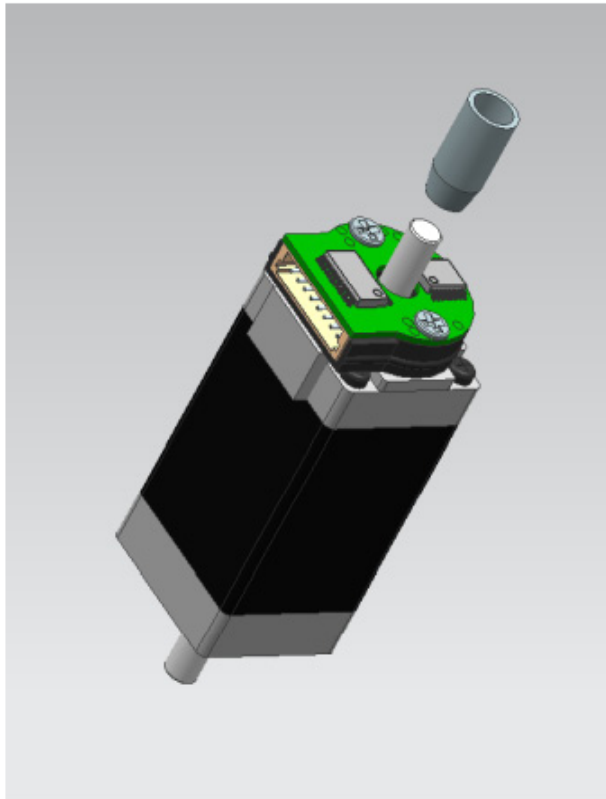
#### Step 1:

- Make sure the encoder mounting surface is flat and clean.
- Place the supplied spacer on the motor.
- Set the ENC-M9I sensor board on the spacer and secure to the motor housing using two M2.5 x 0.45 x 8. Apply a very small amount of Loctite 222 or 242 only to the threaded end of the screws and loosely install. (Loctite datasheet suggests potential chemical compatibility issues with thermoplastics). The recommended height for the screw head is 1 mm. Do not tighten the screws completely at this time.



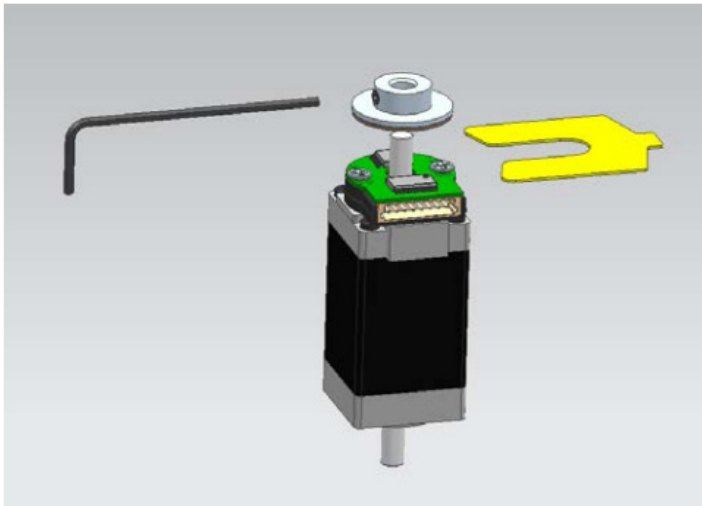
Step 2:

- Slide the alignment tool down the motor shaft with the cone end towards the ENC-M9I.
- Slightly rotate the ENC-M9I encoder as needed and center the encoder by lightly pushing the alignment tool into the center hole of the encoder.
- Tighten the screws to secure the encoder to the motor housing.
- Maintain a constant pressure on the alignment tool while tightening the screws.
- The maximum recommended torque for the mounting screws is 0.28 N-m (40 oz-in).
- Remove the alignment tool.



Step 3:

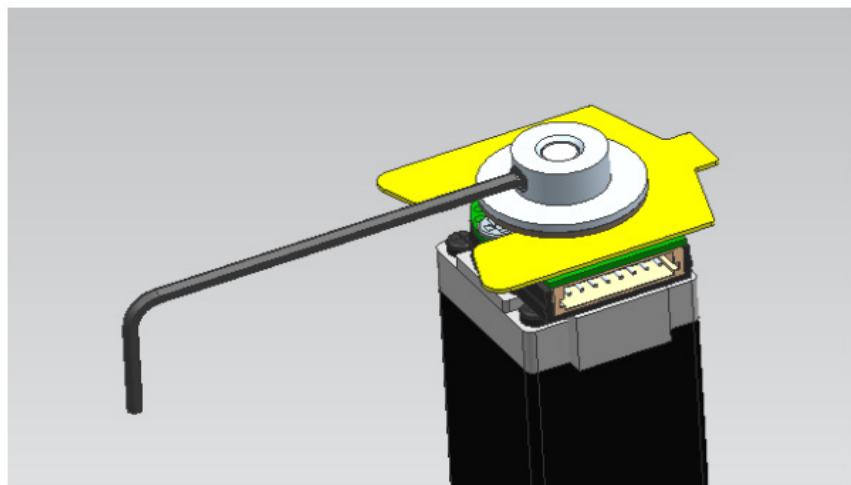
- Slide the ENC-M9I magnetic target down the shaft.
- Position the air gap shim between the top of the MPS160 ASIC and the magnet material on the magnetic target.
- Using the supplied 1.5 mm hex wrench, tighten the set screw on the magnetic target to a maximum torque of 0.71 N-m (100 oz-in).
- Remove the air gap shim.



**Caution**

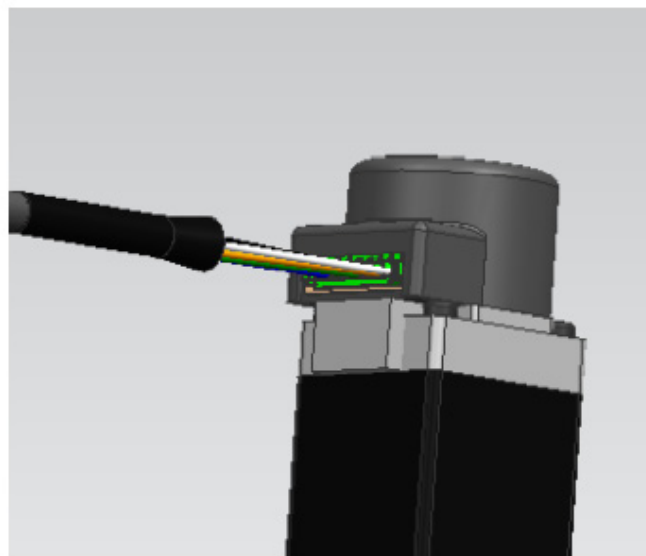
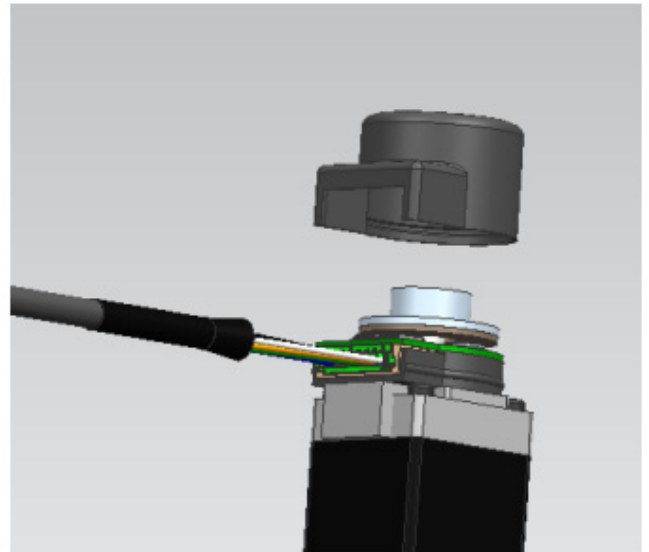
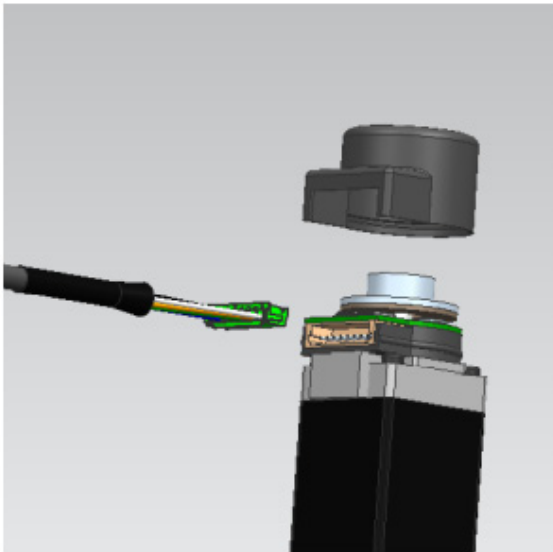
Failure to observe the following caution could create a risk of serious injury.

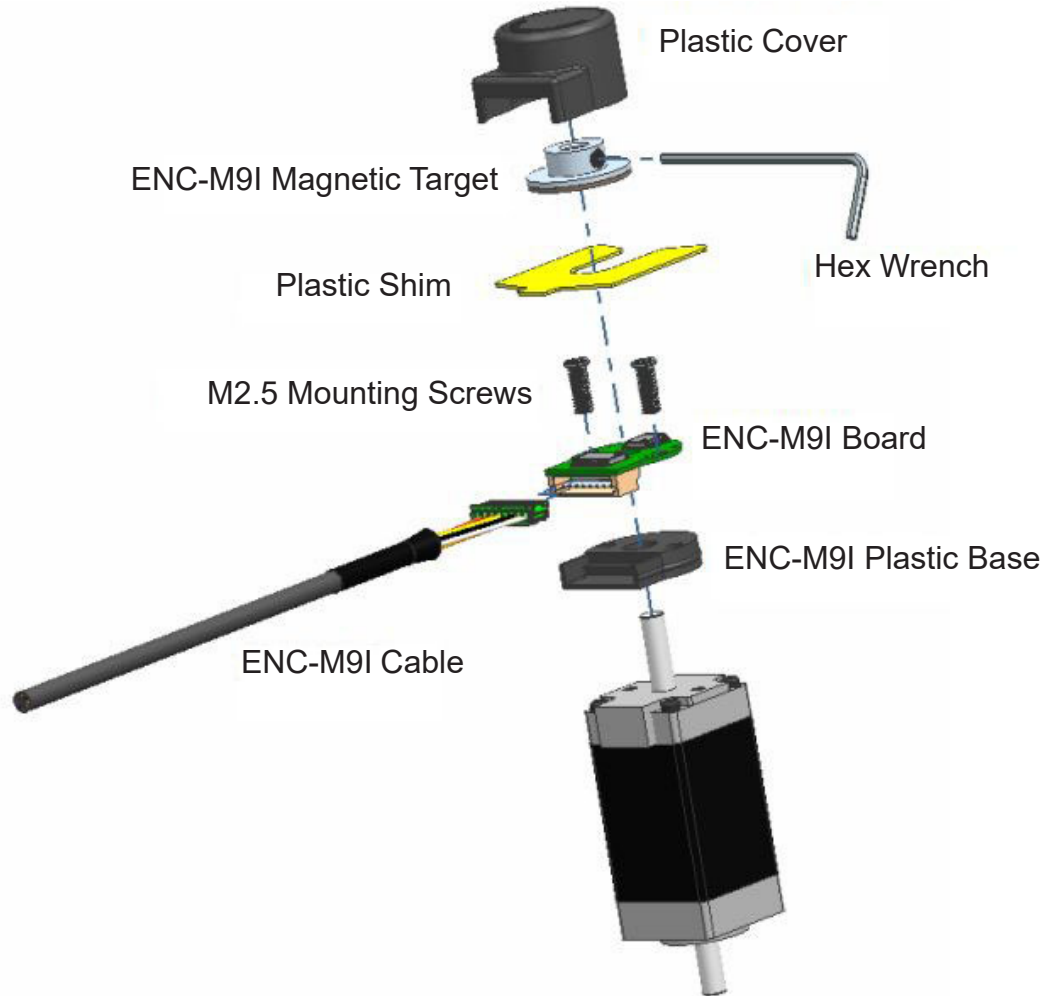
Insufficient tightening of the set screws may result in encoder wheel coming off the shaft.



Step 4:

- Connect the ENC-M9I cable before the plastic cover is installed.
- Place the plastic cover over the ENC-M9I and lightly press down towards the motor until it snaps on the ENC-M9I plastic base. Make sure to properly align the opening on the cover with the ENC-M9I cable connector.





Pin Number	Function	Wire Color
Pin 1	+5V	Red
Pin 2	Ground	Black
Pin 3	A+	Yellow
Pin 4	A-	Yellow/White
Pin 5	B+	Blue
Pin 6	B-	Blue/White
Pin 7	Index+	Orange
Pin 8	Index-	Orange/White