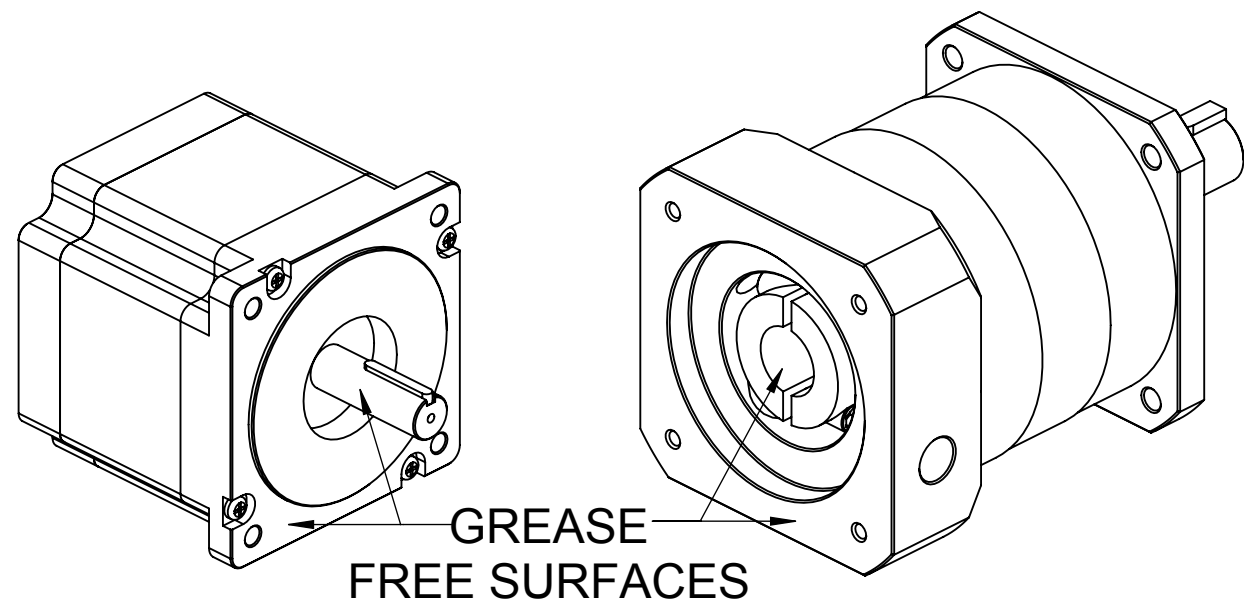


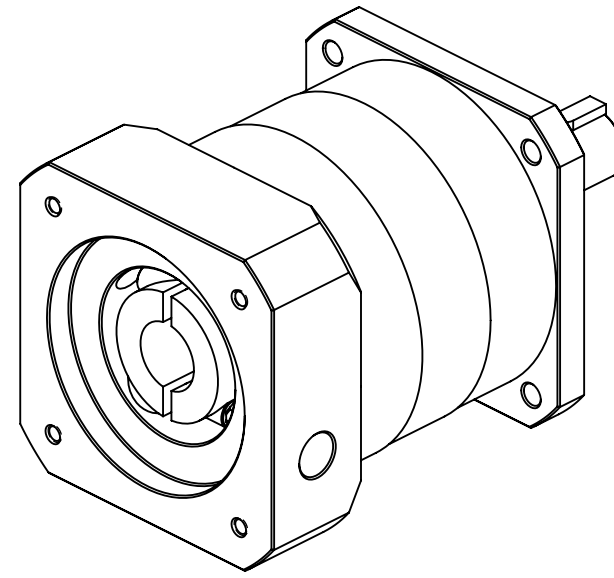
REVISIONS			
REV.	DESCRIPTION	DATE	APPROVED
A	ADDED CHART	8/18/22	JP

STEP 1



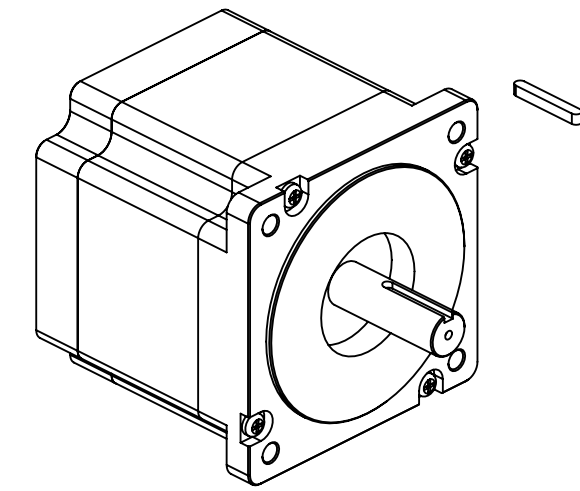
CLEAN MATING SURFACES FREE OF GREASE

STEP 2



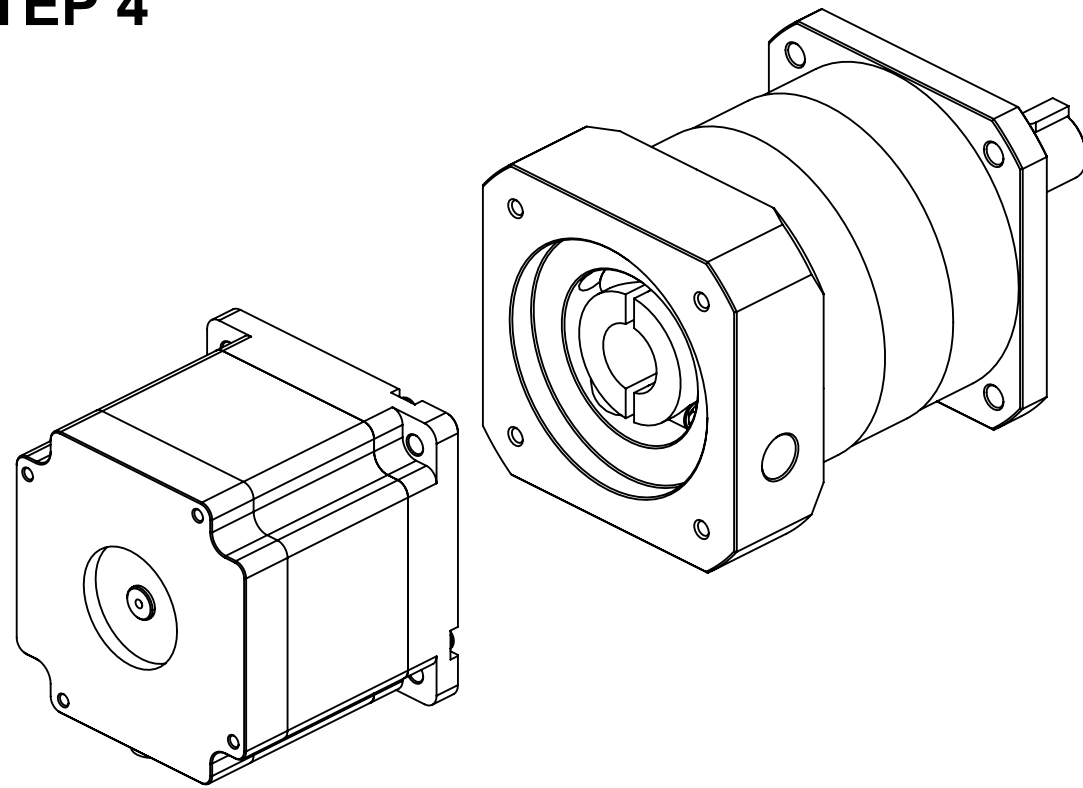
LINE UP THE TWO SCREWS ON THE GEARBOX COUPLER WITH HOLES

STEP 3



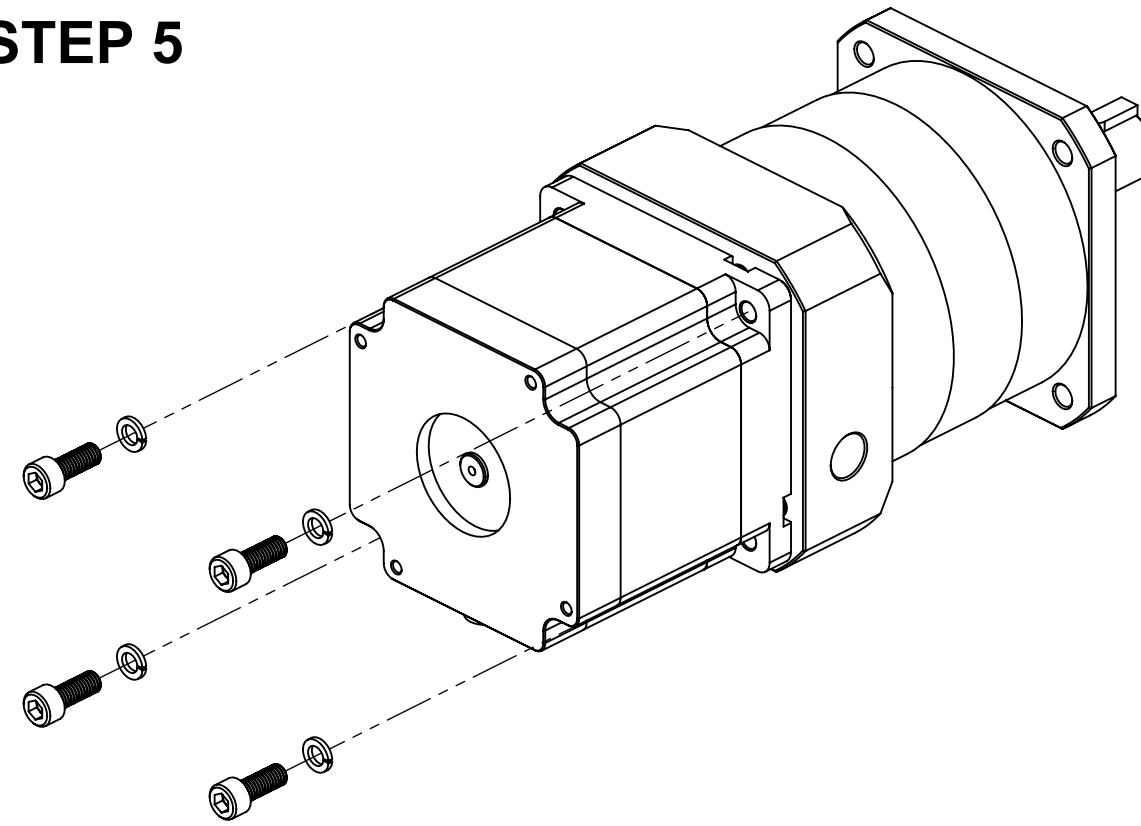
IF THE MOTOR HAS A KEYWAY, REMOVE IT

STEP 4



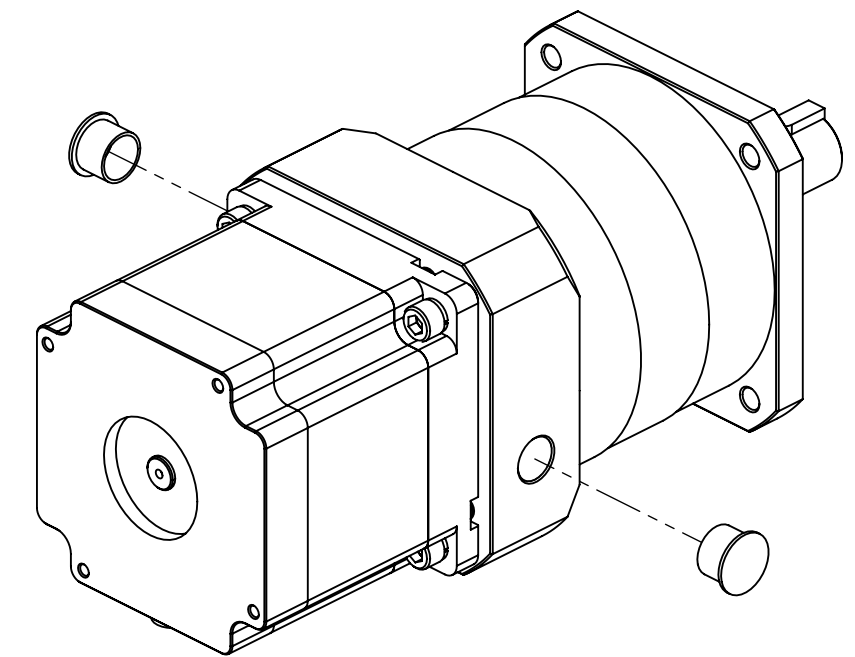
FIT THE MOTOR IN THE GEARBOX

STEP 5



MOUNT MOTOR TO GEARBOX WITH SCREWS AND LOCKWASHERS PROVIDED

STEP 6



TIGHTEN COUPLER SCREWS AND PLACE PROVIDED CAPS OVER HOLES

GEAR BOX SIZE	CLAMP SCREW SIZE	CLAMP SCREW TORQUE
GBPH-060	M4 x 16L	4.1 Nm
GBPH-090	M6 x 20L	14.0 Nm
GBPH-120	M6 x 20L	14.0 Nm
GBPH-150	M10 x 30L	67.0 Nm
GBPH-180	M10 x 30L	67.0 Nm

PROPRIETARY AND CONFIDENTIAL
THE INFORMATION CONTAINED IN THIS DRAWING IS THE SOLE PROPERTY OF ANAHEIM AUTOMATION INC. ANY REPRODUCTION IN PART OR AS A WHOLE WITHOUT THE WRITTEN PERMISSION OF ANAHEIM AUTOMATION INC. IS PROHIBITED.

ANAHEIM AUTOMATION INC. 4985 E. LANDON DRIVE ANAHEIM, CA 92807 (714) 992-6990			
UNLESS OTHERWISE SPECIFIED:	NAME	DATE	
DIMENSIONS ARE IN INCHES	DRAWN	TR	8/18/22
TOLERANCES:	CHECKED		
FRACTIONAL: ±	ENG APPR.		
ANGULAR: MACH ±	MFG APPR.		
TWO PLACE DECIMAL ±	Q.A.		
THREE PLACE DECIMAL ±	COMMENTS:		
INTERPRET GEOMETRIC TOLERANCING PER:			
MATERIAL			
FINISH			
NEXT ASSY	USED ON		
APPLICATION	DO NOT SCALE DRAWING		



TITLE:
GBPH GEARBOX TO MOTOR MOUNTING INSTRUCTIONS

SIZE	DWG. NO.	REV
C	AA5203	A
SCALE: 1:2	WEIGHT:	SHEET 1 OF 1