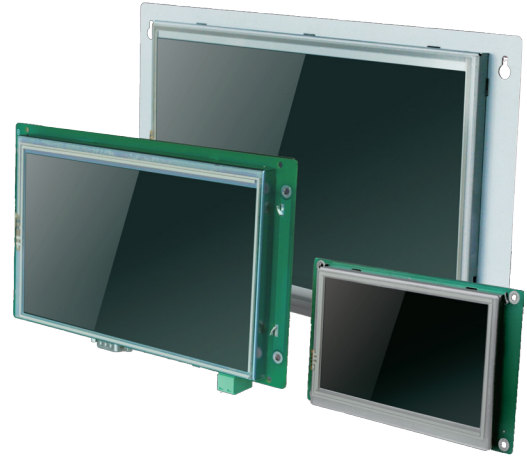


KNC-HMI-GR Series



FEATURES

- **16.77m (24 Bits) True Color**
- **32-Bit 800 MHz ARM RISC CPU**
- **Real-Time Clock, Reserve Time for More than 2 Years at Power Off State**
- **2 COM Ports, Supports Simultaneous Communications, Supports RS232/RS485/RS422**
- **24 VDC Input Voltage**
- **CE Certified**
- **128MB NAND FLASH + 128MB DDR3 Memory**
- **Ethernet Models Available**

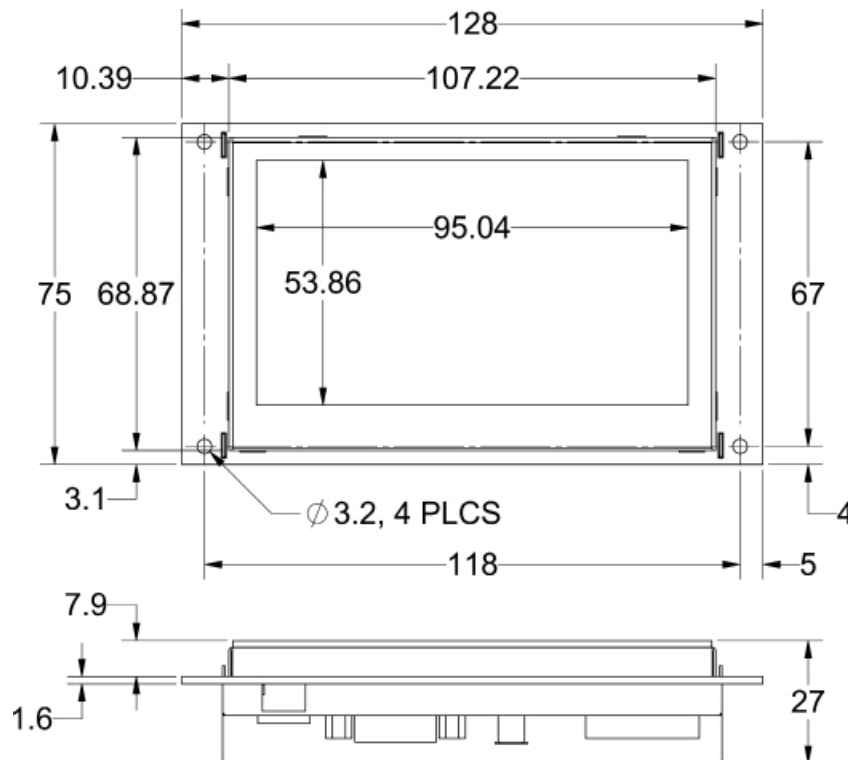


DESCRIPTION

The GR Series HMI is an advanced industrial touch screen panel designed to keep your application operating seamlessly and efficiently. Featuring a MicroUSB interface, the GR Series USB slave is designed for modern connectivity. The GR series' frameless design perfectly contours to the surface of your equipment for seamless integration. They can be installed without a front shell, allowing OEMs the flexibility to design custom masks to enhance their equipment's appearance. The GR Series boasts a stunning display with 16.77 million colors, providing the touch screen with vibrant colors and exceptional resolution. Powered by top-tier industrial-grade processors, these HMIs deliver outstanding performance and efficiency. Each unit supports simultaneous communication through multiple serial ports, enabling connections to several controllers at once. With the intuitive and robust DTools configuration software, users can easily create first-class programs efficiently.

DIMENSIONS

KNC-HMI-GR043

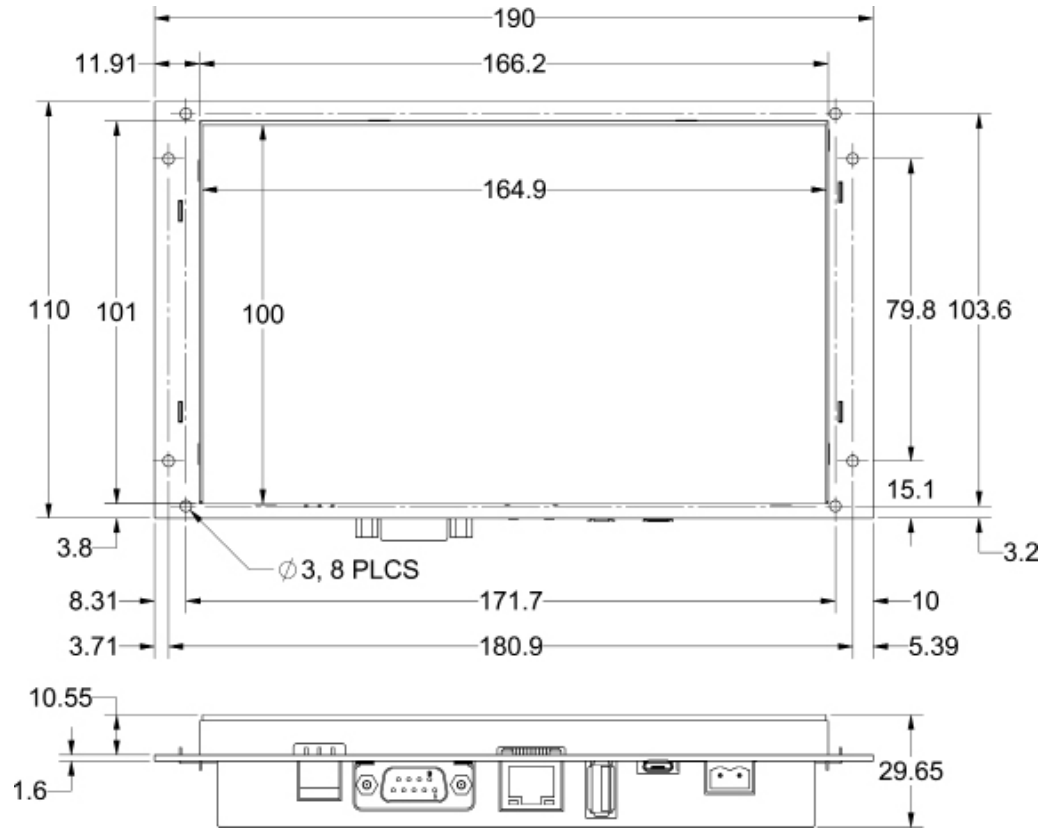


L011902

All units are in mm

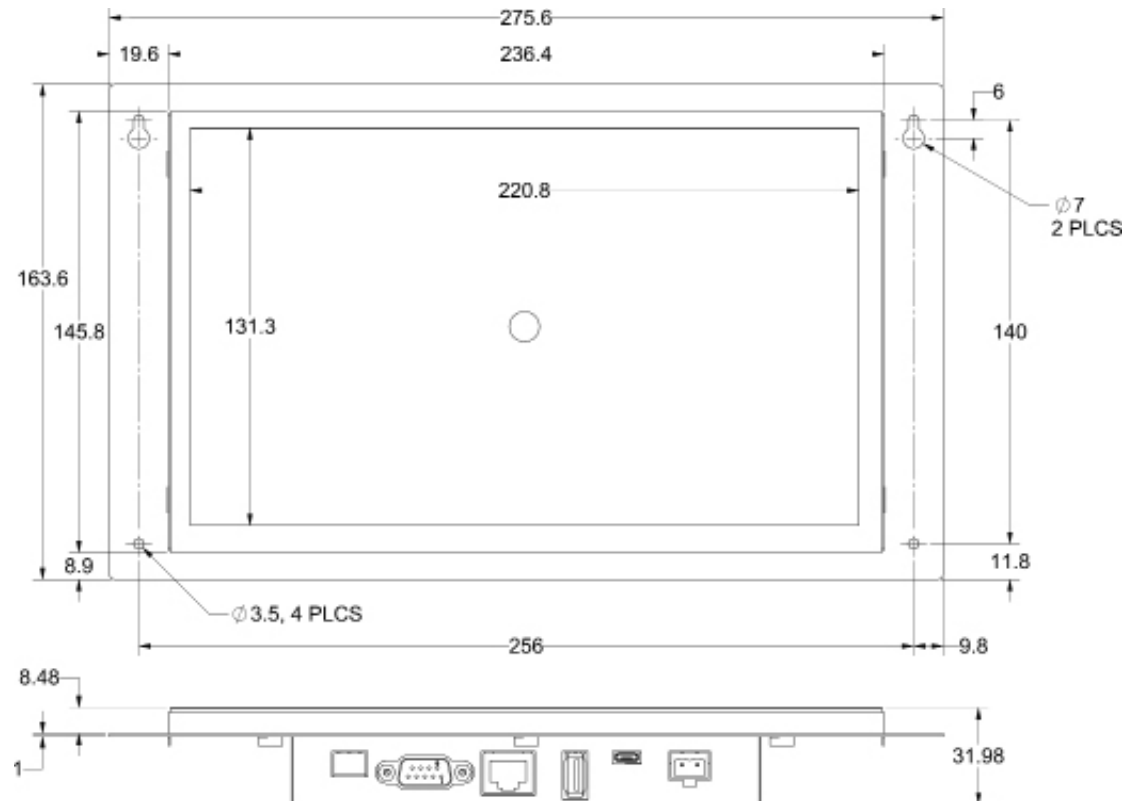
DIMENSIONS

KNC-HMI-GR070E



All units are in mm

KNC-HMI-GR100E



KNC-HMI-GR Series



SPECIFICATIONS

MODEL	GR043	GR070E	GR100E
Performance Specification			
Display Size	4.3" TFT	7" TFT	10.1" TFT
Resolution	480x272 Pixels	800x480 Pixels	1024x600 Pixels
Display Color	16.77 Million True Color		
Backlight	LED		
Brightness	450cd/m ²	250cd/m ²	400cd/m ²
Backlight Life	30000 Hours		
Touch Panel	4 Line Precision Resistance Network (Surface Hardness 4H)		
CPU	ARM RISC 32Bit 800MHz		
Storage	128MB NAND Flash Memory + 128MB DDR3 Memory		
RTC	Built-in		
Expandable Memory	1 USB Host		
Print Port	USB Host/Serial Port		
Ethernet	None	10/100M Self-Adaption	
Program Download	USB Slave(Micro USB)/U Disk	USB Slave(Micro USB)/U Disk/Ethernet	
Communication Port	COM0:RS232/RS485/RS422; COM2:RS232	COM0:RS232/RS485/RS422; COM2:RS232	
Electrical Specification			
Input Power Supply	DC10.8V ~ DC28V		
Rated Power	2W @24VDC	3.6W @24VDC	6W @24VDC
Allowable Loss of Power	<3ms		
Insulation Resistance	Over 50MΩ@500VDC		
Hi-pot Test	500 VAC 1 Minute		
Structure Specification			
Shell Color	-		Metallic Gray
Shell Material	Metallic		
Shape Size	128x75x27mm	190.4x110x30mm	275.6x163.6x32mm
Installation Hole Size	107.2x68.9mm	166x101mm	238x148mm
Weight	0.44 lbs	0.66 lbs	1.98 lbs
Environment Specification			
Temperature of Working Environment	0 ~ 50°C		
Humidity of Working Env.	10 ~ 90%RH (non-condensing)		
Storage Environment Temperature	-20 ~ 60°C		
Storage Environment Humidity	10 ~ 90%RH (non-condensing)		
Anti-Seismic Degree	10 ~ 500Hz, 30m/s ² , X, Y, Z Direction/Hour		
Cooling Mode	Natural Air Cooling		
Certification			
CE Authentication	EN6100-6-4:2007+A1:2011, EN61000-6-2:2005		
Software			
Configuration Software	Kinco DTools V3.2 and Above Version		