

TBI-TRH30 - Linear Guides



FEATURES

- **Size: 30mm Linear Guide Rail**
- **Dynamic Load: Up to 37.33 kN**
- **Static Load: Up to 63.57 kN**
- **Rail Lengths Up to 4 Meters**
- **Custom Rail Sizes Available**
- **Matched Bearing Blocks**
- **End-Seal Options: Standard or Reinforced**
- **Pre-Load: Clearance, Standard, or Light**



DESCRIPTION

TBI's high-quality linear guides deliver precision, durability, and affordability in one single package! Available in a 30mm size, this sleek, high-quality design incorporates the rail and the block together to provide a convenient, easy-to-use product. Little friction resistance allows for high accuracy and speed, while several preload options are available for increased rigidity and performance. They are offered in standard or custom lengths, and are ideal for dynamic loads up to 37.3 kN and static loads up to 63.6 kN. All standard blocks come with a bottom seal and double lip end seals.

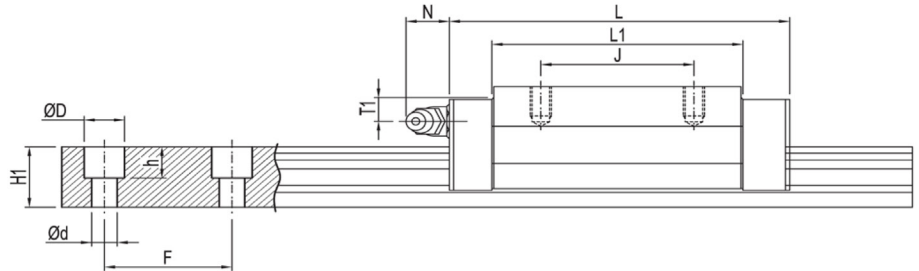
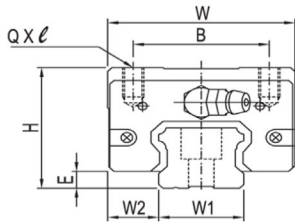
SPECIFICATIONS

Block Part Number	Fabrication Dimensions (mm)			Block Dimensions (mm)							Load Capacities (kN)		Static Moment (Nm)			Weight (lbs)
	H	W ₂	E	W	B	J	L	L1	QxL	T	C	C ₀	M _x	M _y	M _z	
TBI-TRH30FE-N-Z0	42	31	7	90	72	52	132	105	M10x15	8	47.0	88.3	1235.7	1441.6	1441.6	1.8
TBI-TRH30VE-N-Z0	45	16	7	60	40	60	132	105	M8x10	11	47.0	88.3	1235.7	1441.6	1441.6	1.1
TBI-TRH30VN-N-Z0	45	16	7	60	40	40	96.3	69.3	M8x10	11	37.3	63.5	889.6	735.2	735.2	1.8
TBI-TRH30FN-N-Z0	42	31	7	90	72	52	96.3	69.3	M10x15	8	37.3	63.5	889.6	735.2	735.2	2.2

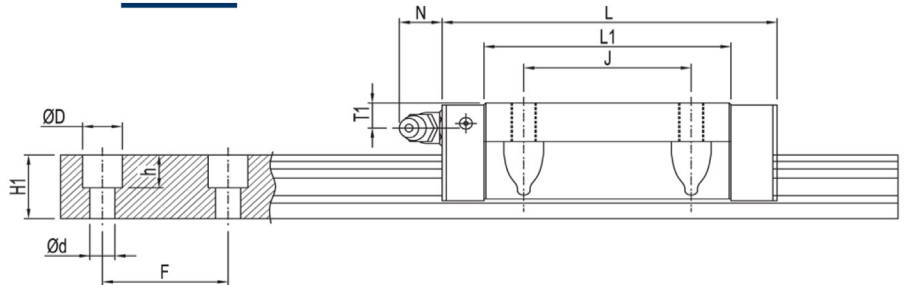
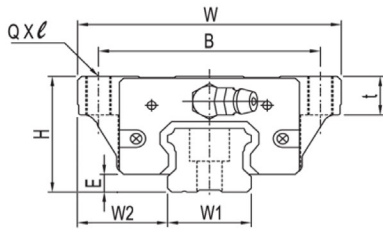
Rail Part Number	Rail Dimensions (mm)							Rail Length (mm)	Weight (lbs)
	W ₁	H ₁	F	D	d	d x D x h			
TBI-TR30N-0200-20-20	28	23	80	14	9	9 x 14 x 12	200	2.0	
TBI-TR30N-0300-30-30	28	23	80	14	9	9 x 14 x 12	300	3.0	
TBI-TR30N-0500-10-10	28	23	80	14	9	9 x 14 x 12	500	5.0	
TBI-TR30N-0700-30-30	28	23	80	14	9	9 x 14 x 12	700	7.0	
TBI-TR30N-0900-10-10	28	23	80	14	9	9 x 14 x 12	900	9.0	
TBI-TR30N-1100-30-30	28	23	80	14	9	9 x 14 x 12	1100	11.0	
TBI-TR30N-1300-10-10	28	23	80	14	9	9 x 14 x 12	1300	13.0	
TBI-TR30N-1500-30-30	28	23	80	14	9	9 x 14 x 12	1500	15.0	
TBI-TR30N-1700-10-10	28	23	80	14	9	9 x 14 x 12	1700	17.0	
TBI-TR30N-1900-30-30	28	23	80	14	9	9 x 14 x 12	1900	19.0	
TBI-TR30N-2100-10-10	28	23	80	14	9	9 x 14 x 12	2100	21.0	
TBI-TR30N-2300-30-30	28	23	80	14	9	9 x 14 x 12	2300	23.0	
TBI-TR30N-2500-10-10	28	23	80	14	9	9 x 14 x 12	2500	25.0	
TBI-TR30N-2700-30-30	28	23	80	14	9	9 x 14 x 12	2700	27.0	
TBI-TR30N-2900-10-10	28	23	80	14	9	9 x 14 x 12	2900	29.0	
TBI-TR30N-3100-30-30	28	23	80	14	9	9 x 14 x 12	3100	31.0	
TBI-TR30N-3300-10-10	28	23	80	14	9	9 x 14 x 12	3300	33.0	
TBI-TR30N-3500-30-30	28	23	80	14	9	9 x 14 x 12	3500	35.0	
TBI-TR30N-3700-10-10	28	23	80	14	9	9 x 14 x 12	3700	37.0	
TBI-TR30N-3900-30-30	28	23	80	14	9	9 x 14 x 12	3900	39.0	
TBI-TR30N-4000L	28	23	80	14	9	9 x 14 x 12	4000	40.0	

L011027

TRH-V



TRH-F



Force Diagram

