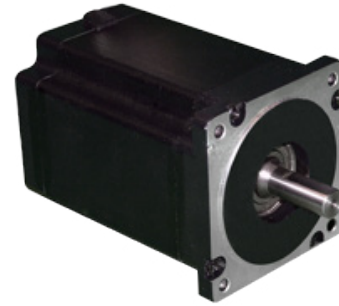


# 34V Series - High Torque Stepper Motors



FEATURES

- **NEMA 34 Frame Size**
- **1.8° Step Angle**
- **Substantial Increase In Torque Over Standard Torque Motors - Up to 1300 oz-in**
- **High Acceleration and Increased Rotor Inertia**
- **3 Stack Lengths**
- **Rugged Construction**
- **Higher Temperature Characteristics**
- **CE Certified and RoHS Compliant**



DESCRIPTION

The 34V Series High Torque Stepper Motors offer a great value without sacrificing quality. These motors were designed to offer the highest possible torque while minimizing vibration and audible noise. A broad line of motor windings and stack lengths are available off-the-self, and motors can be customized to fit your machine requirements. The standard 8-lead motors can be connected in all possible configurations: series, unipolar, or parallel, to allow the maximum flexibility for your application. We can also customize the winding to perfectly match your voltage, current, and maximum operating speed. The 34V Series is the closest match to the Superior Electric Slosyn KML, and oriental Motors Nema 34 Series. [See Accessories on our website for optional motor adders, such as encoders, brakes, cables and connectors. For gearbox options, see Gearboxes. For compatible drivers, consider MBC05641, MBC10641, MBC082561, MBC12101, MLA10641, and Driver Packs.](#)

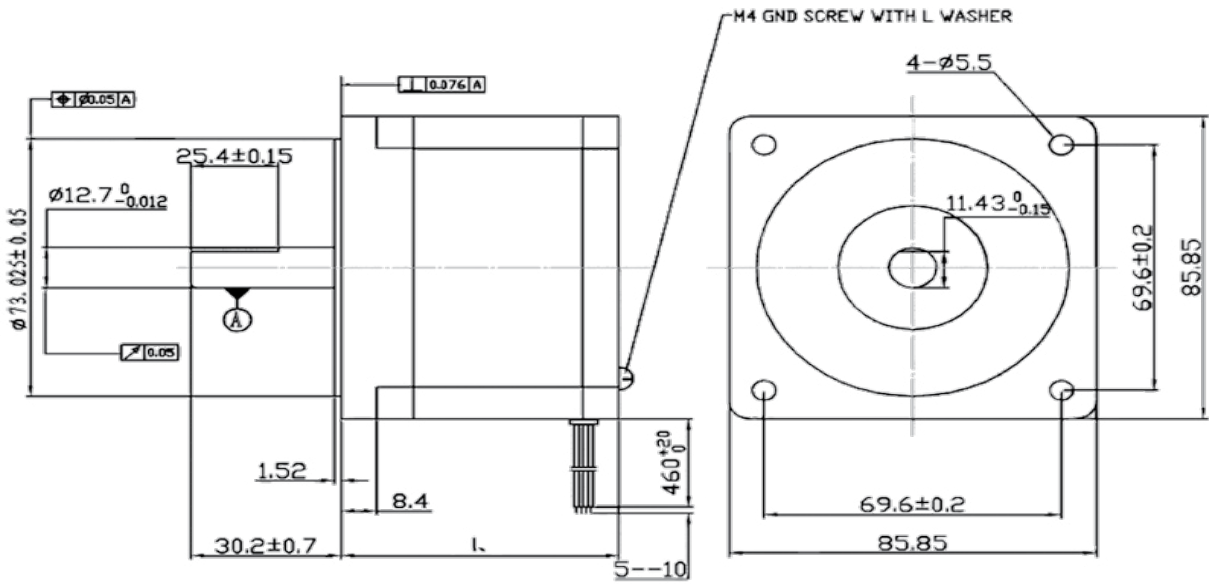
SPECIFICATIONS

Model #	NEMA Size	Bipolar Torque (oz-in)	Series Current (A)	Unipolar Current (A)	Parallel Current (A)	Unipolar Inductance (mH)	Rotor Inertia (oz-in-sec <sup>2</sup> )	Shaft Diameter (in)	# Lead Wires	Weight (lbs)	"L" Length (in)
34V109S-LW8	34	420	3.2	4.5	6.4	0.52	0.01	0.5	8	3.75	2.5
34V209S-LW8	34	841	3.3	4.6	6.5	2.7	0.03	0.5	8	6.61	3.8
34V309S-LW8	34	1301	3.4	4.8	6.8	4.8	0.05	0.5	8	8.82	4.9

Notes: The 7<sup>th</sup> character "S" denotes a single shaft, use "D" for double shaft. Custom leadwires, cables, connectors, and windings are available upon request. 8 lead wire configurations are also available.

L010427

DIMENSIONS



WIRING INFORMATION

Connection	Lead Wire Connection	Lead Wire Color
4 - Lead Bipolar Series MBC or MLP Series	A	Red
	/A	Black
	B	Green
	/B	Yellow
	None	Red/White & Black/ White
4 - Lead Bipolar Parallel MBC or MLP Series	None	Green/White & Yellow/ White
	A	Red & Black/White
	/A	Red/White & Black
	B	Green & Yellow/White
6 - Lead Unipolar BLD, TM Series	/B	Green/White & Yellow
	Phase 1	Red
	Phase 3	Black
	Phase 2	Green
	Phase 4	Yellow
Common Phase 1 & 3	Common Phase 1 & 3	Red/White & Black/ White
	Common Phase 2 & 4	Green/White & Yellow/ White

SPECIFICATIONS

Full Step Angle:	1.8°	Max Axial Force:	48.50lbs
Insulation Type:	Class B	Radial Play:	1.00lbs @ 0.00098 in
Max Radial Force:	24.25 lbs	End Play:	2.20lbs @ 0.00299 in