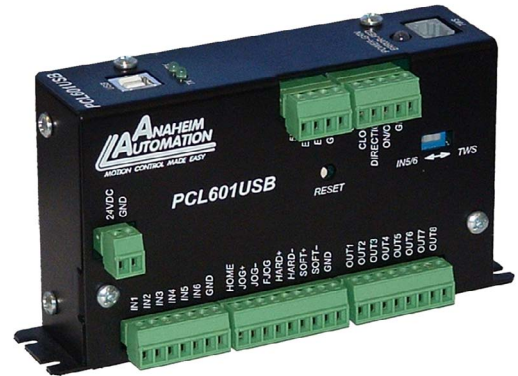


# PCL601 USB - Programmable Controller



## FEATURES

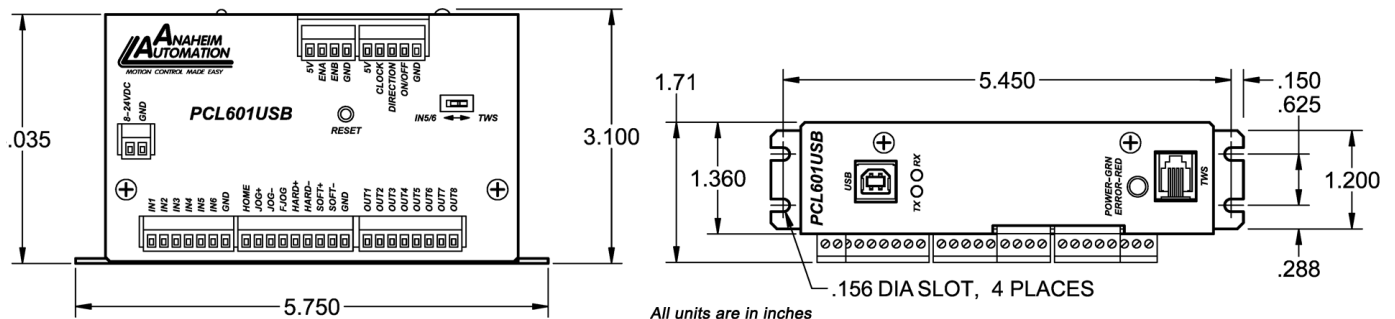
- **Cost-Effective Motion Control Solution**
- **Easy to Use Windows Software Included**
- **Stored Program Capabilities**
- **24V Compatible Inputs**
- **0-5V Analog Input for Speed or Distance**
- **Encoder Feedback**
- **RS232 and RS485 Compatible**
- **Multi-Drop Capabilities**
- **Compact and Rugged Construction**



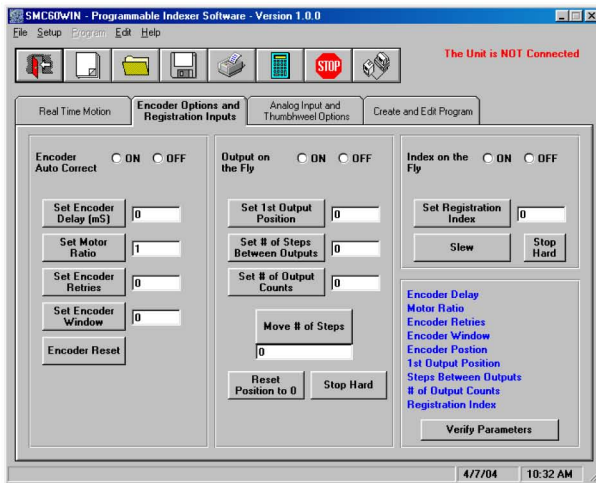
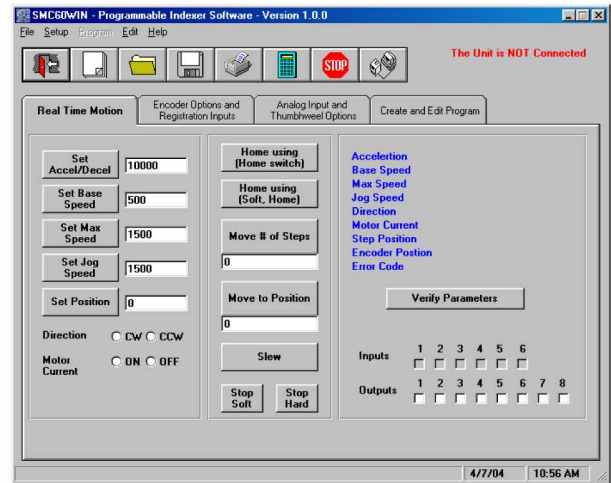
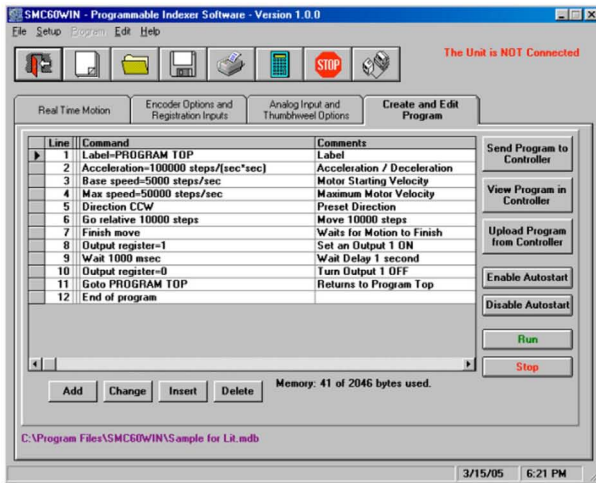
## DESCRIPTION

The PCL601USB is a single-axis step motor controller containing 2 Kbytes of nonvolatile stored programming space and quadrature encoder feedback. The user can write the program and then have the PCL601USB autostart the program on power up. It provides flexible, independent control of stepper motors from computers, or any machine controller with a USB port. It is also capable of standalone operation, making it an embedded machine controller. The easy to use Windows software, SMC60WIN, can be used to directly control motion and to program the PCL601USB. The PCL601USB also has the ability for real time functions. "Direct Mode" is used to directly control motion for Real Time Movements through serial communication.

## DIMENSIONS



L010649



- Power Requirements: 8-24VDC, 50/60Hz (0.5W Peak Power)
- Nonvolatile Memory: 2KB of stored programming space
- Baud Rate: 38,400 Baud, Fixed
- Data Format: Half Duplex, 1 Start bit, 8 data bits, no parity, 1 stop bit
- Communication Protocol: RS232 or RS485 selectable
- Encoder Feedback: Quadrature, CHA, CHB, 5VDC Signal Compatibility
- Controller Outputs: 8 Programmable Outputs, Open Drain Type, 40V, 100mA, +5VDC Output, 50mA
- Controller Inputs: 6 Programmable Inputs  
 Logic 0: 0 - 0.8VDC  
 Logic 1: 3.5 - 24VDC  
 Analog Input: 0 - 5VDC
- Pulse Output Range: 1 - 50KHz, 10µs Negative Going Pulse Width

Model #	Num-ber of Axis	Current Range (A)	Description	Input Voltage (VAC)	Power (Watt)
DPMLP601	1	1.5 - 8.0	Line Powered Microstepping Bipolar Driver with an Integrated PCL601	90 - 132	500
DPD75601	1	1.0 - 7.0	Line Powered Unipolar Driver with an Integrated PCL601	90 - 265	300
DPN10601	1	1.5 - 10.0	Line Powered Microstepping Bipolar Driver with an integrated PCL601	90 - 265	300
TWS7	-	-	Seven decade thumbwheel switch for entering distance via external interface. (Accessory)	-	-
485SD9TB	-	-	RS232 to RS485 converter for multiple axes communication. (Accessory)	-	-
AA9MFC-6	-	-	Serial port cable, required to communicate to PC. 6ft long. (Accessory)	-	-