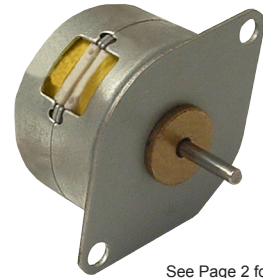


FEATURES

- Permanent Magnet Stepper Motor
- 25mm Diameter
- 15 Degree Step Angle
- Up to 2.22 oz-in of Bipolar Holding Torque
- Customization Available for:
 - Winding Current to Optimize Torque
 - Shaft Options
 - Cables or Connectors
- RoHS Compliant and CE Certified



See Page 2 for Additional Model Types

DESCRIPTION

These miniature Permanent Magnet DC Stepper Motors measure 25mm in diameter and provide up to 2.22 ounce-inches of bipolar holding torque. These motors come standard in 15° step angles with a four or six-lead wire connection, and are offered in 9V or 12V voltage ratings. Customization is available for larger quantities.

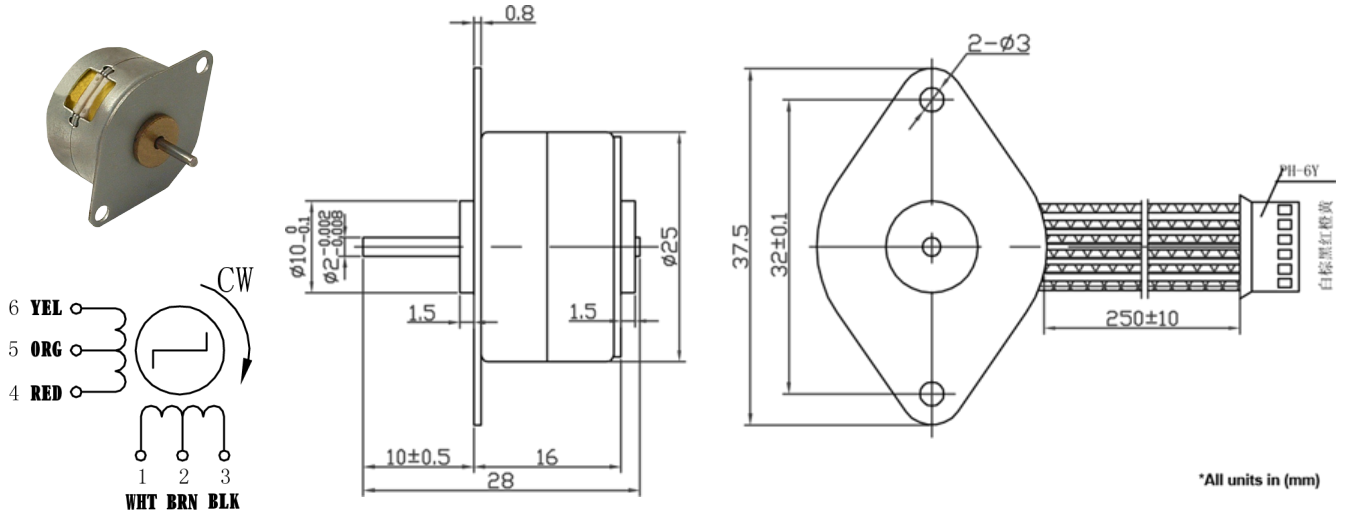
SPECIFICATIONS

Item	# of Wires	# of Phases	Bipolar Holding Torque (oz-in)	Detent Torque (oz-in)	Bipolar Series RMS Voltage (V)	Current Per Phase (A)	Resistance Per Phase (ohms)	Rotor Inertia (oz-in-sec ²)	Weight (lbs)	Length (mm)
TSM25-150-16-12V-040A-LW6	6	4	1.80	1.04	12	0.40	30	0.000014	0.08	16.0
TSM25-150-16-9V-045A-LW6	6	4	2.22	0.49	9	0.45	50	0.000014	0.08	16.0

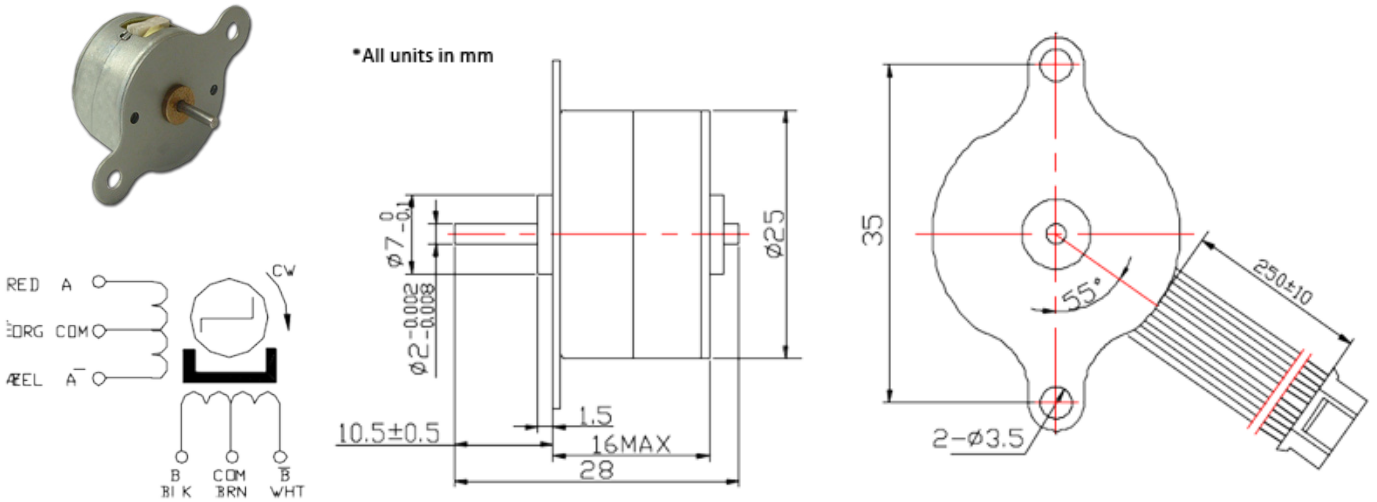
Step Angle Accuracy	±8% (Full Step, No Load)	Insulation Resistance	100ΩMin. 500 VDC
Resistance Accuracy	±10%	Dielectric Strength	500VAC for One Minute
Inductance Accuracy	±20%	Shaft Radial Play	0.06Max (450 g-load)
Temperature Rise	80°C Max	Shaft Axial Play	+/- 0.5mm (450 g-load)
Ambient Temperature	-20°C to +50°C		

L010964

TSM25-150-16-12V-040A-LW6



TSM25-150-16-9V-045A-LW6



**All units are in mm